

Assignment #.1  
BUSA130  
Fall 2019,2020

Section #. \_\_\_\_\_

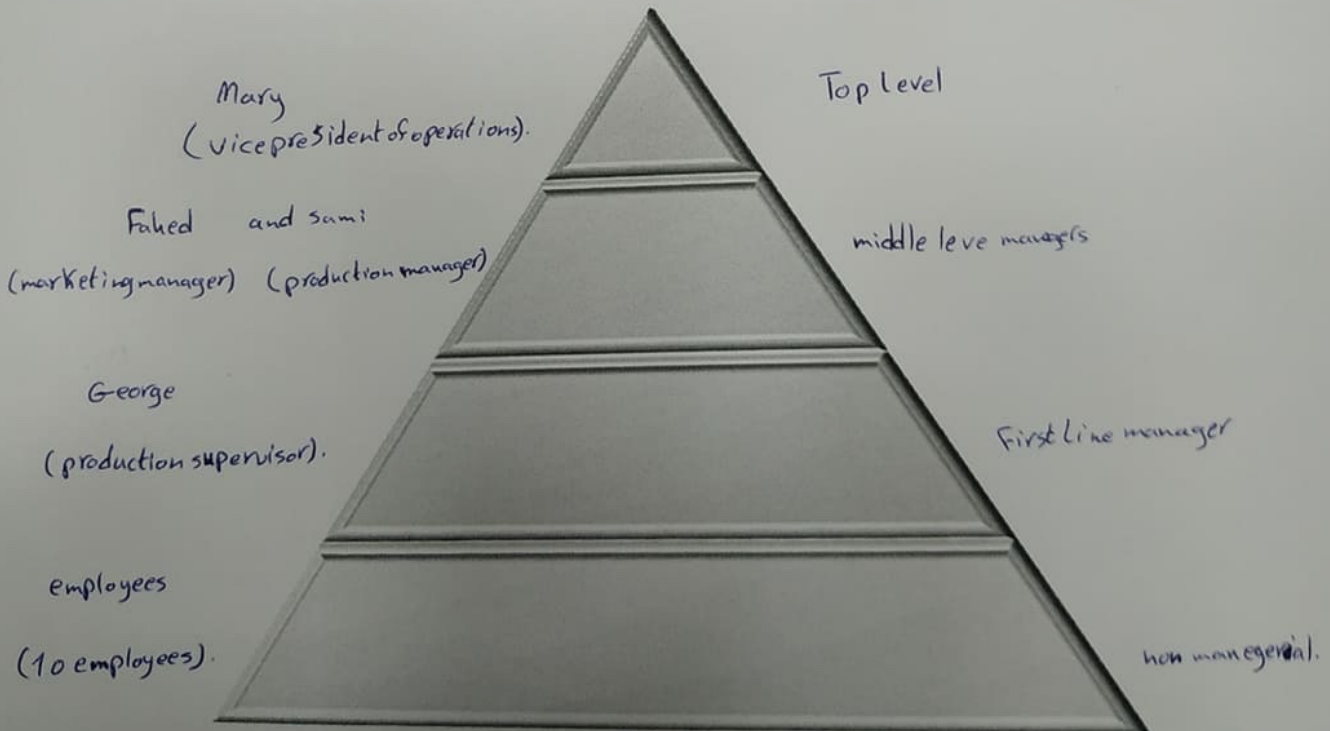
Student Name & Number:  
\_\_\_\_\_

George, a production supervisor مشرف على الانتاج, is responsible for 10 employees who assemble components into a finished product that is sold to distributors. George reports to Sami, a production manager مدير الانتاج, who in turn coordinates with Fahed, a marketing manager مدير التسويق who reports to Mary, a vice president of operations نائب الرئيس التشغيلي.

Recently, Mary asked Fahed to have a meeting with George and Sami regarding some customer concerns in the production area. The focus of the meeting was to judge the validity of the customer concerns, and to develop a specific plan to address these concerns.

Based on the above scenarios, please fill in the shape below based on :

- 1- Management levels
- 2- People's name with their Managerial title.



You are the manager of XXX Company that sells chocolate. You make 3 products or product line, they are: KitKat, Zaki, Galaxy. You sell in two places, Ramallah, Bethlehem. You have the Department of Marketing, Finance, and Production. You also have a CEO, and the Board of Directors. Draw them as well.

I want you to draw an organizational chart to group your company in departments. You have to draw a chart based on Product departmentalization, then according to Geographic departmentalization, then according to functional departmentalization.

