
Introduction to Human Anatomy & Physiology



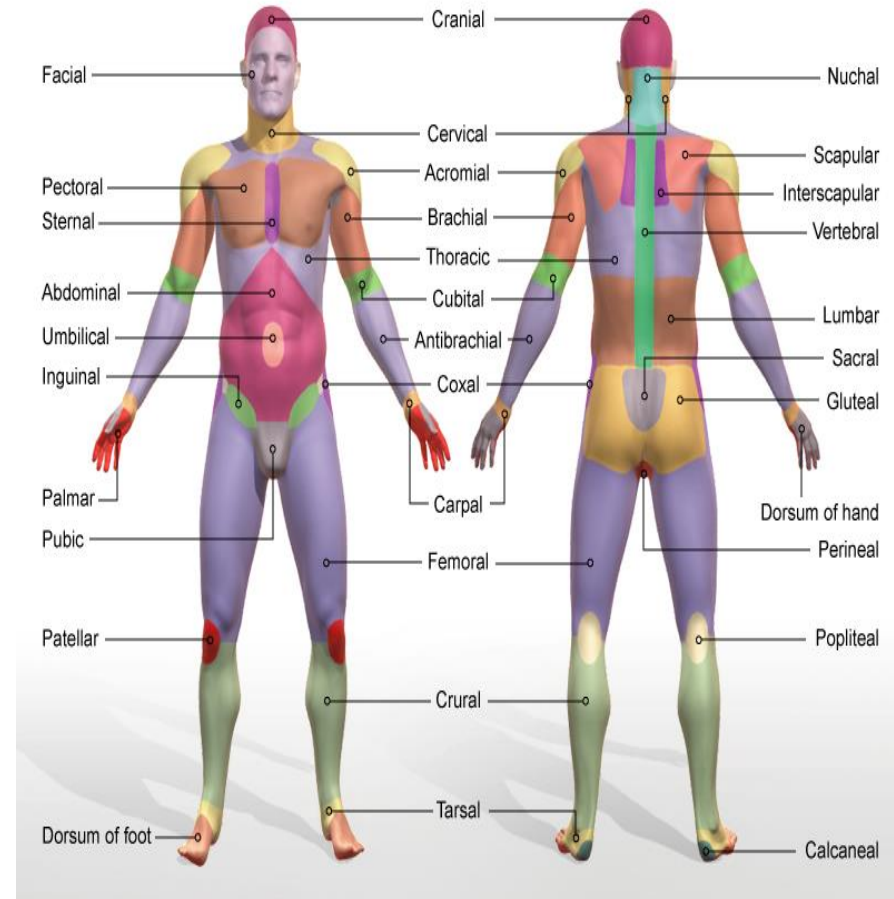
Ms. Mais Abdelhaq

Overview of Anatomy and Physiology

- **Anatomy** – the study of the structure of body parts and their relationships to one another
 - Gross or macroscopic
 - Microscopic
 - Developmental
- **Physiology** – the study of the function of the body's structural machinery

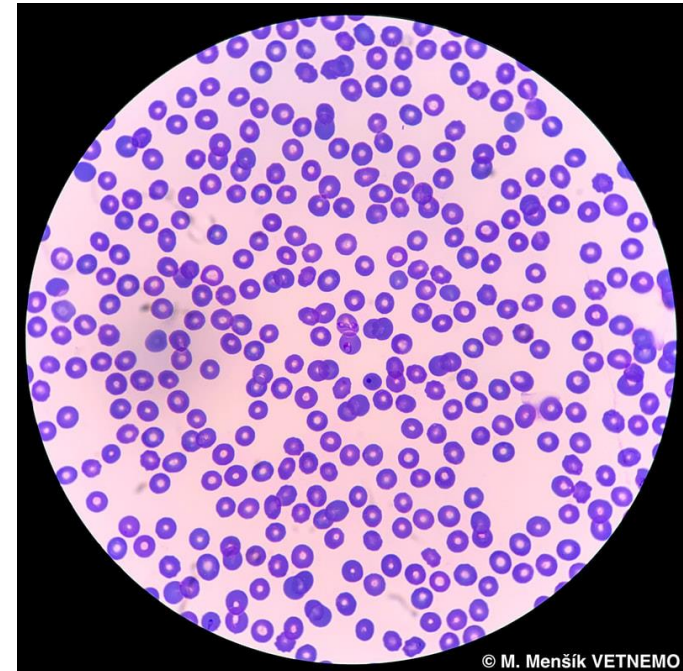
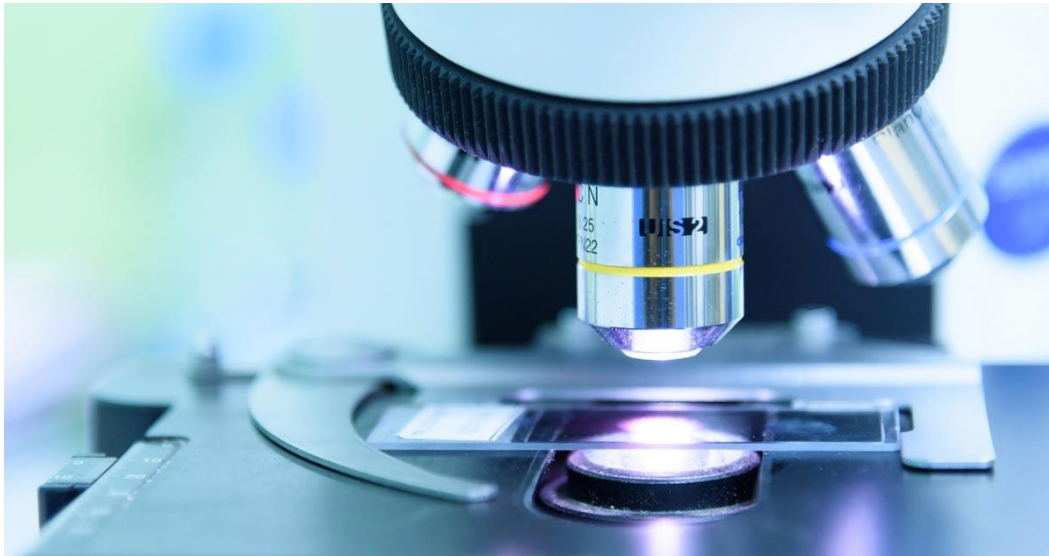
Gross Anatomy

- **Regional** – all structures in one part of the body
- **Systemic** – gross anatomy of the body studied system by system
- **Surface** – study of internal structures as they relate to the overlying skin



Microscopic Anatomy

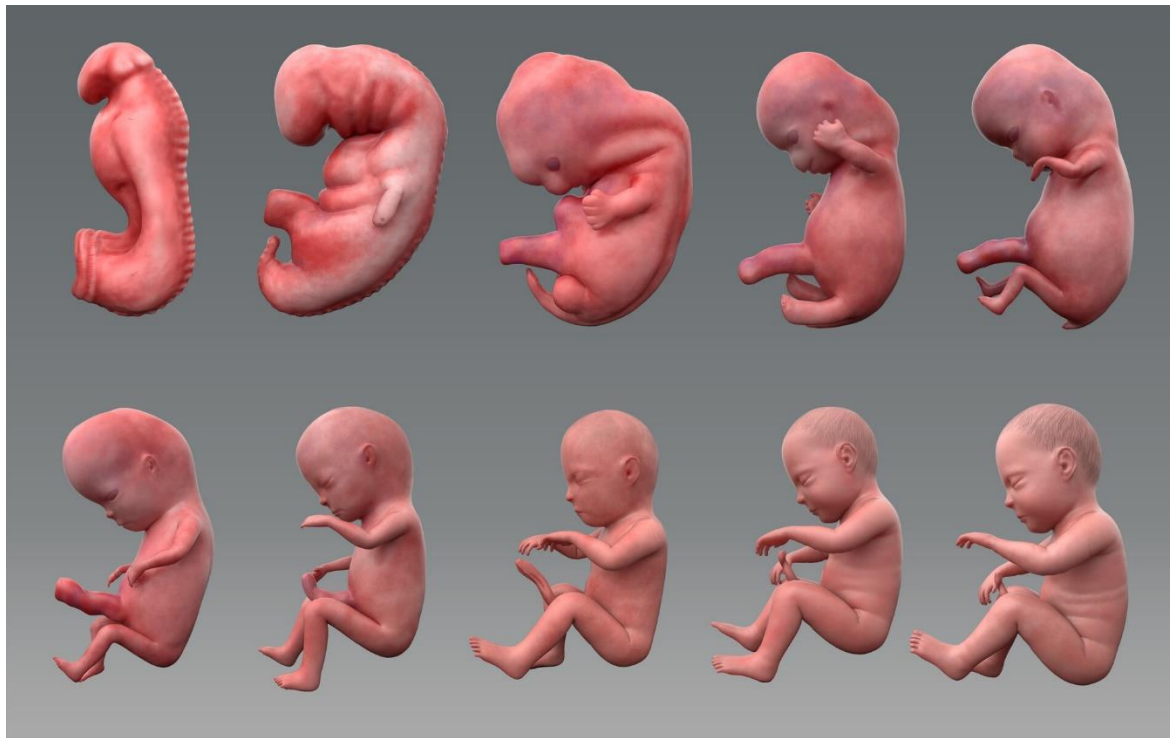
- **Cytology** – study of the cell
- **Histology** – study of tissues



© M. Menšík VETNEMO

Developmental Anatomy

- Traces structural changes throughout life
- **Embryology** – study of developmental changes of the body before birth



Physiology

- Considers the operation of specific organ systems
 - Renal – kidney function
 - Neurophysiology – workings of the nervous system
 - Cardiovascular – operation of the heart and blood vessels
- Focuses on the functions of the body, often at the cellular or molecular level

Physiology

- Understanding physiology also requires a knowledge of physics, which explains
 - electrical currents
 - blood pressure
 - the way muscle uses bone for movement

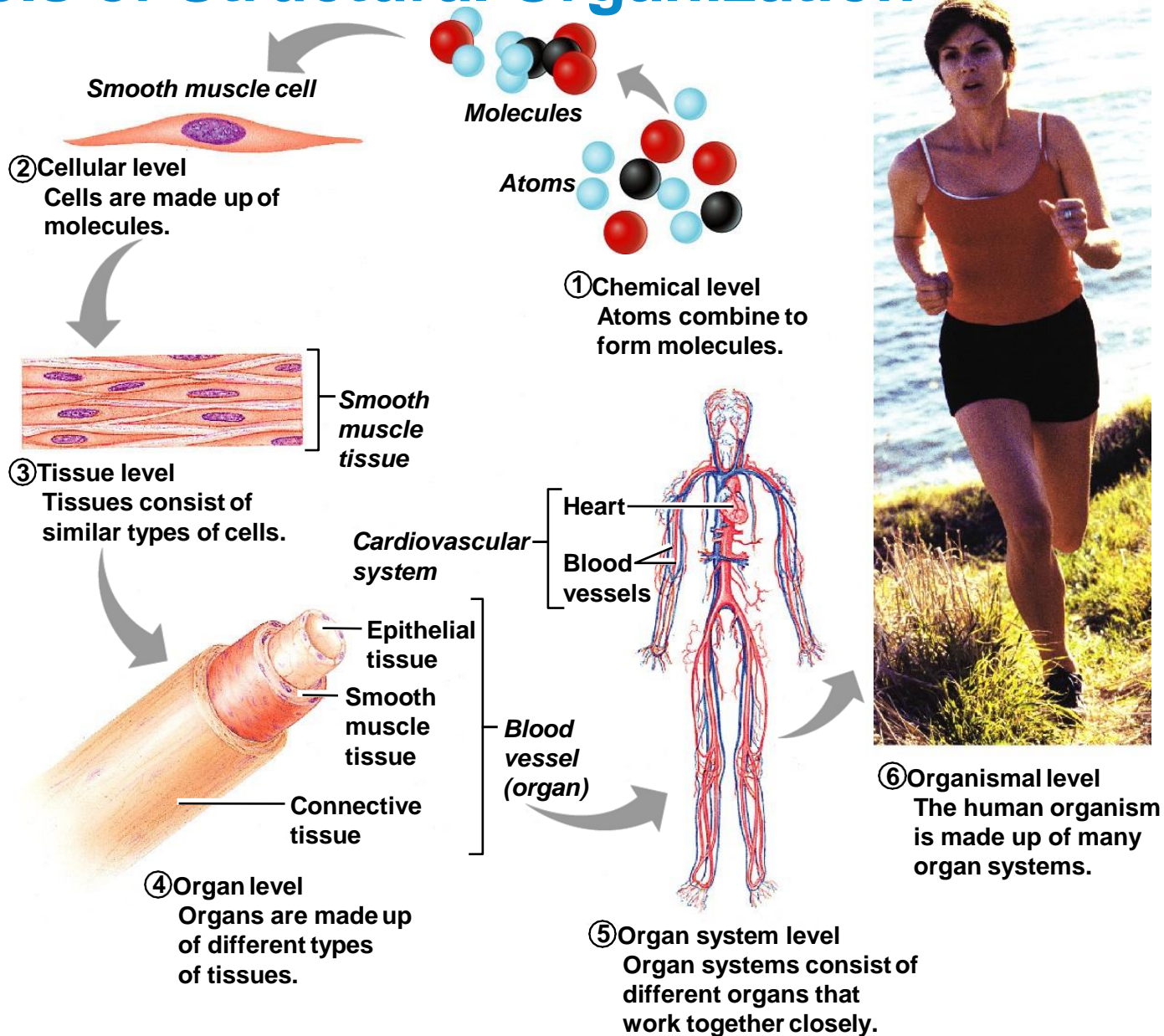
Principle of Complementarity

- Function always reflects structure
- What a structure can do depends on its specific form
- Physiology and anatomy are related to each other and they are inseparable.

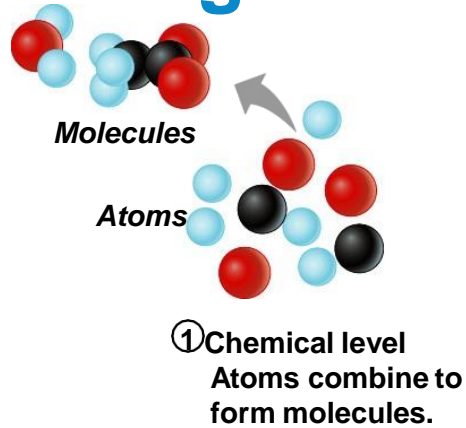
Levels of Structural Organization

- Chemical – atoms combined to form molecules
- Cellular – cells are made of molecules
- Tissue – consists of similar types of cells
- Organ – made up of different types of tissues
- Organ system – consists of different organs that work closely together
- Organismal – made up of the organ systems

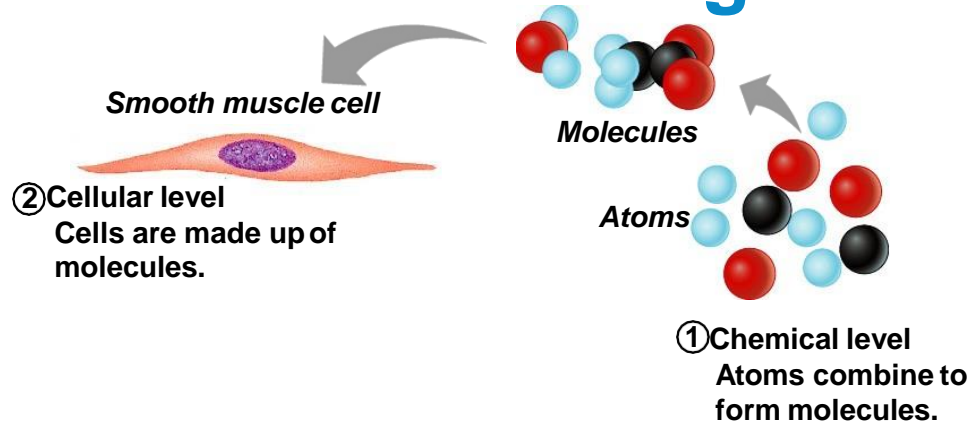
Levels of Structural Organization



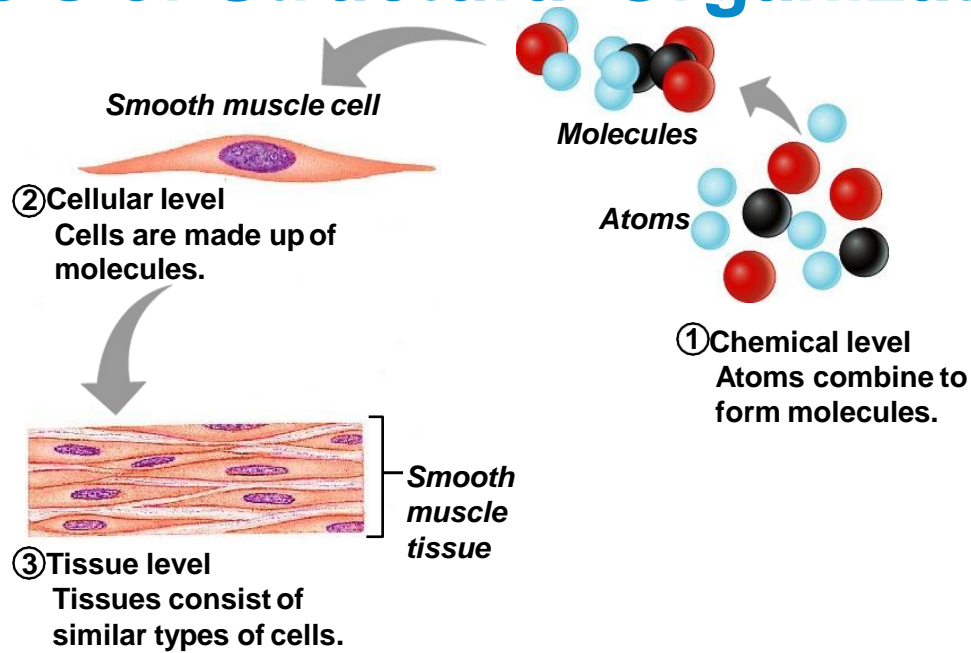
Levels of Structural Organization



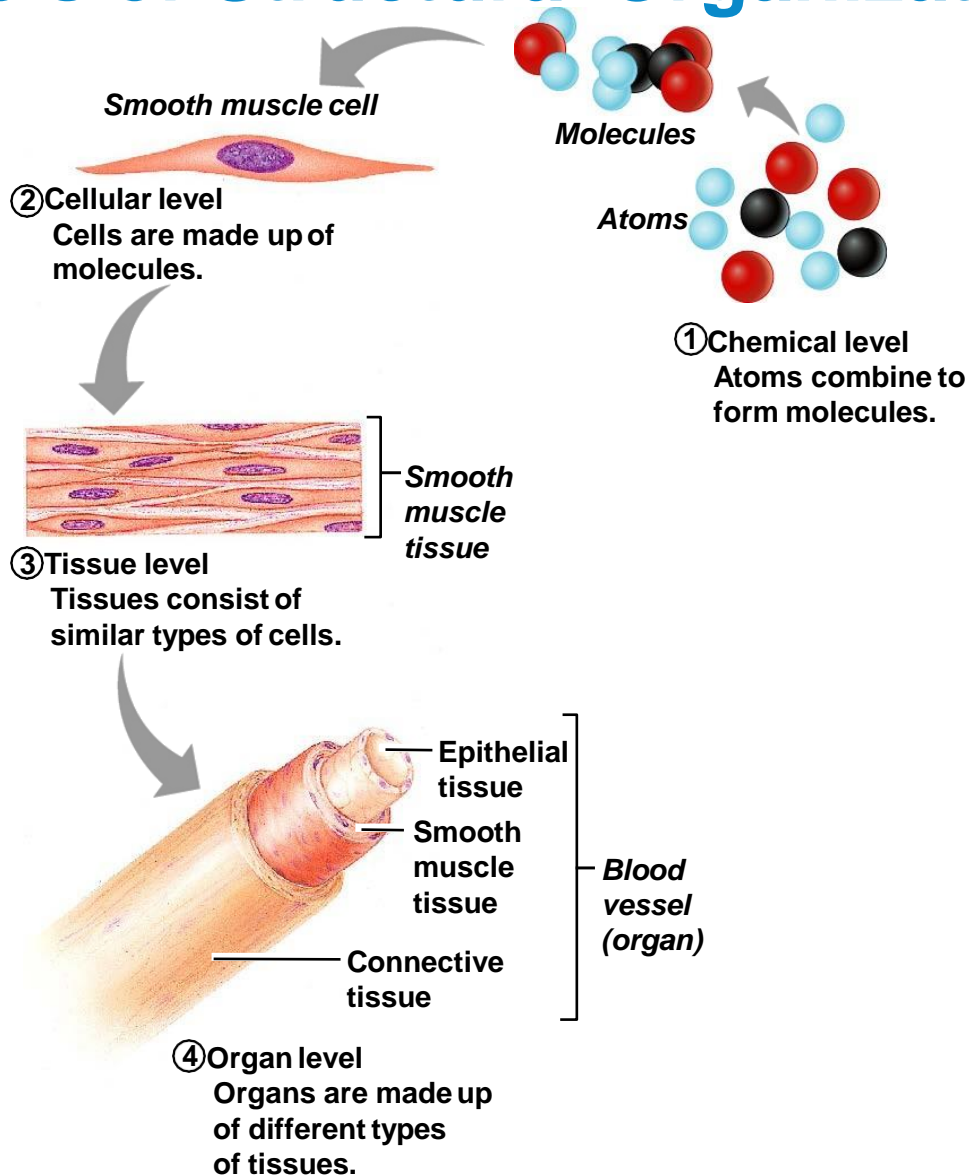
Levels of Structural Organization



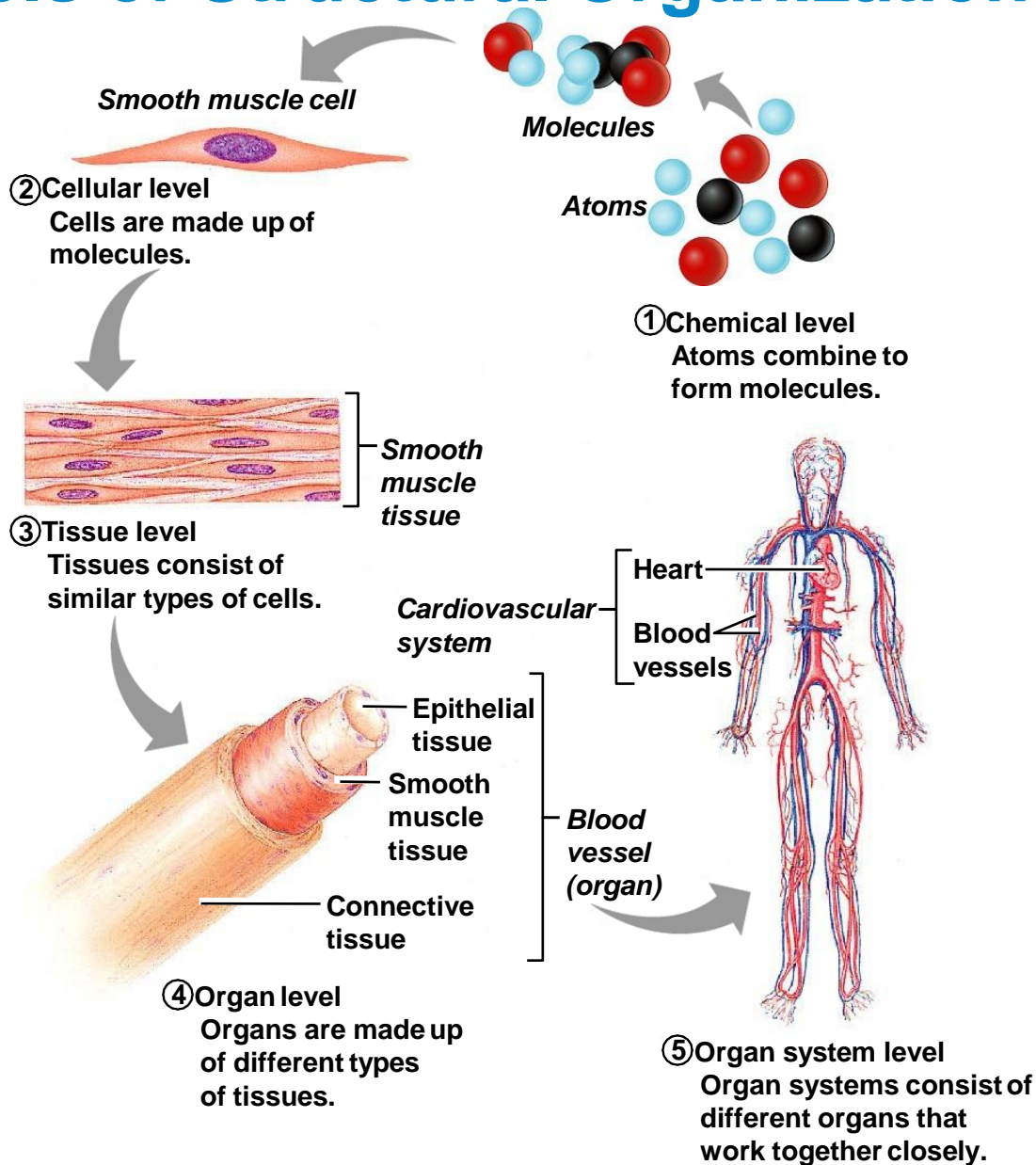
Levels of Structural Organization



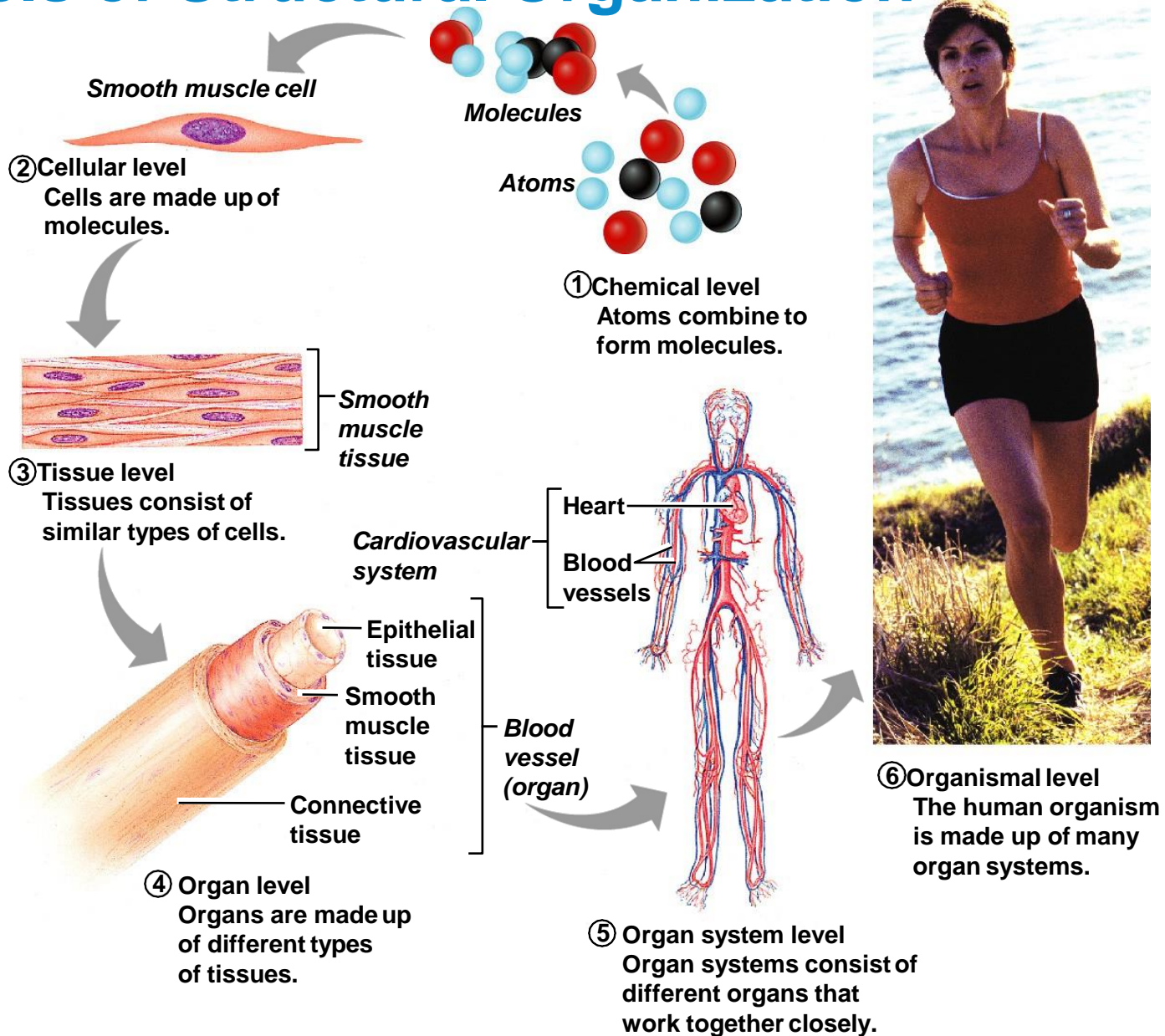
Levels of Structural Organization



Levels of Structural Organization



Levels of Structural Organization



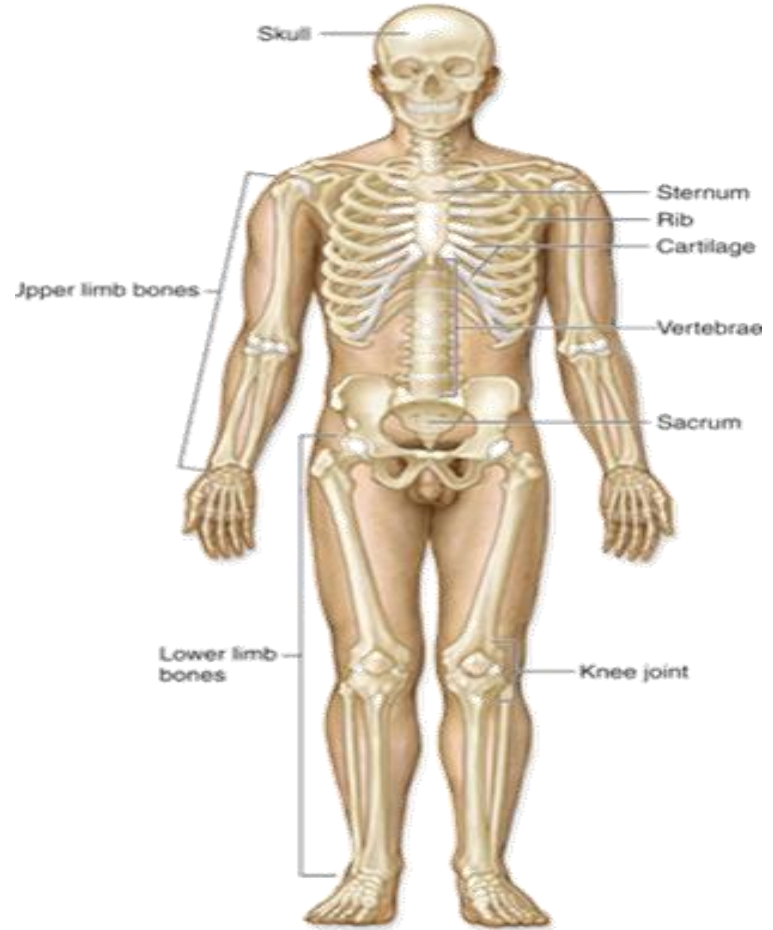
Integumentary System

- Forms the external body covering
- Composed of the skin, sweat glands, oil glands, hair, and nails
- Protects deep tissues from injury and synthesizes vitamin D



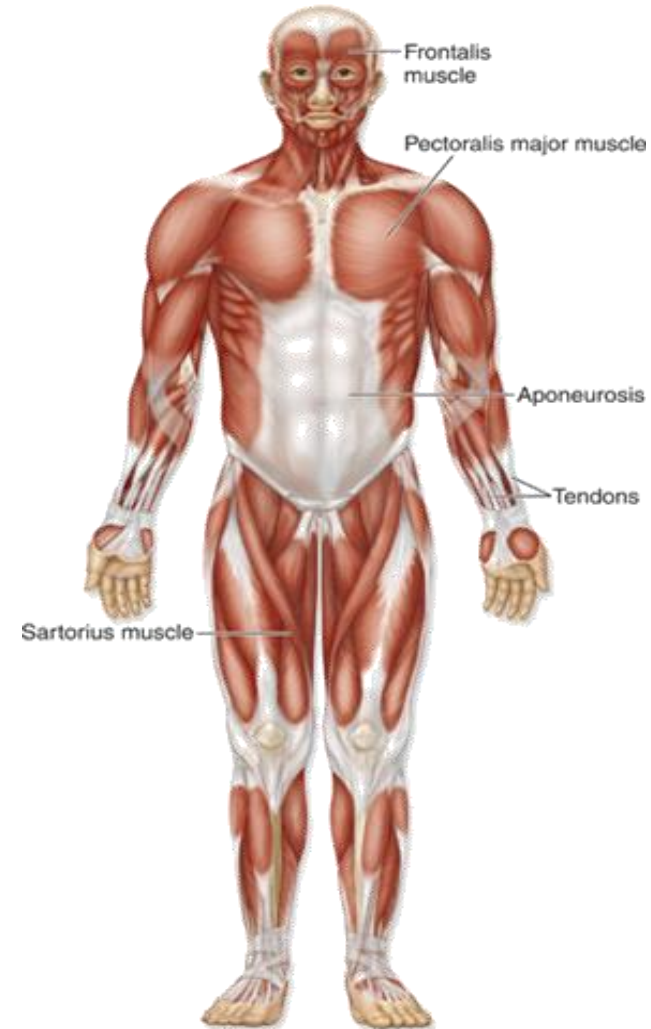
Skeletal System

- Composed of bone, cartilage, and ligaments
- Protects and supports body organs
- Provides the framework for muscles
- Site of blood cell formation
- Stores minerals



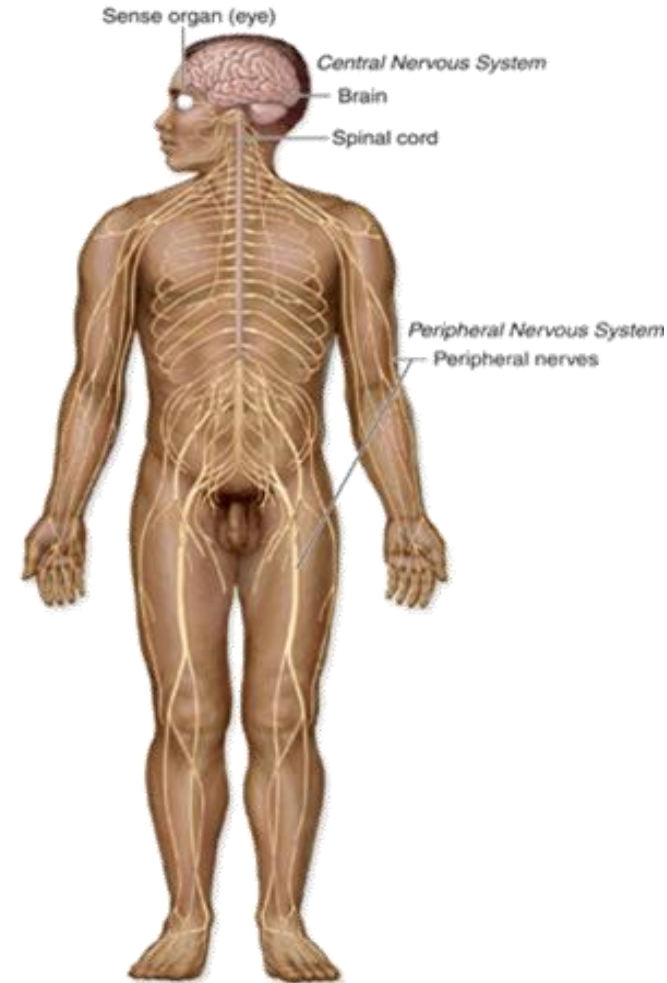
Muscular System

- Composed of muscles and tendons
- Allows manipulation of the environment, locomotion, and facial expression
- Maintains posture
- Produces heat



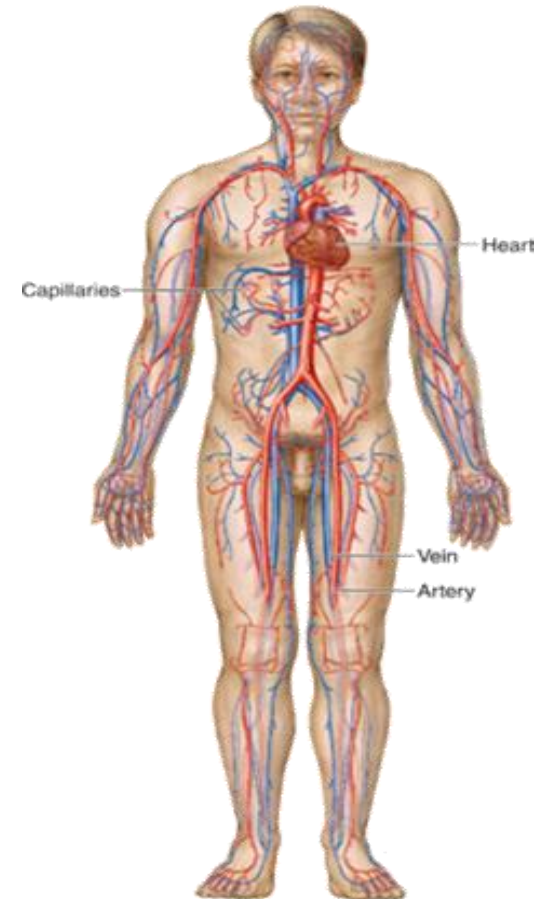
Nervous System

- Composed of the brain, spinal column, and nerves
- Is the fast-acting control system of the body
- Responds to stimuli by activating muscles and glands



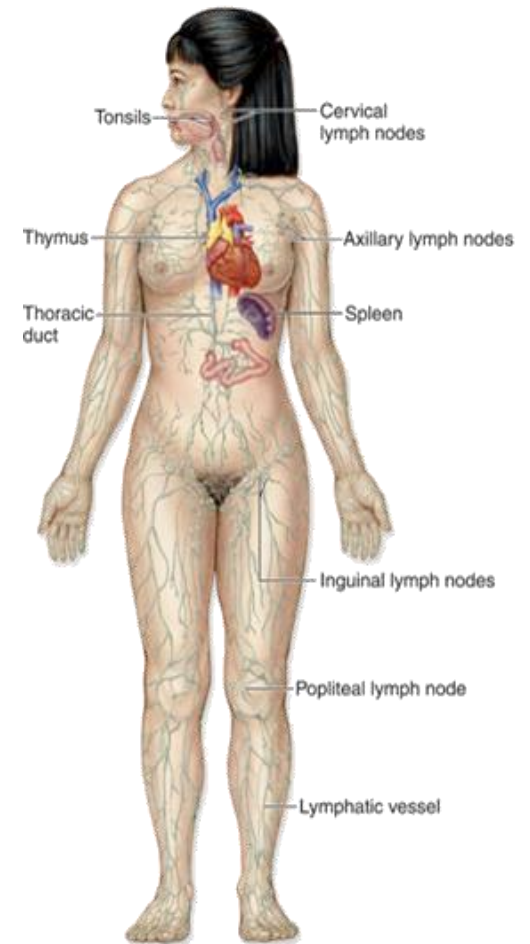
Cardiovascular System

- Composed of the heart and blood vessels
- The heart pumps blood
- The blood vessels transport blood throughout the body



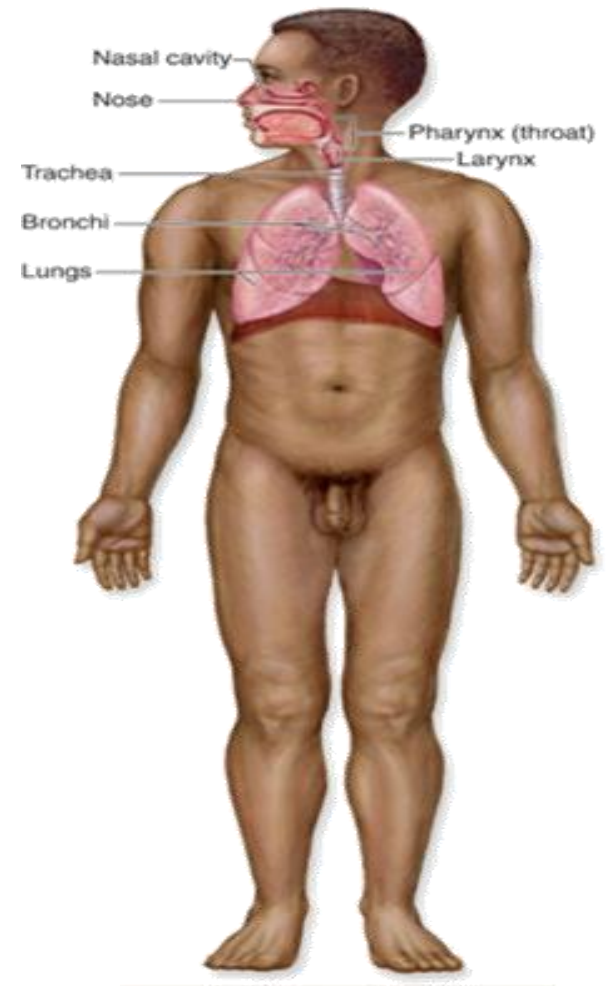
Lymphatic System

- Composed of red bone marrow, thymus, spleen, lymph nodes, and lymphatic vessels
- Picks up fluid leaked from blood vessels and returns it to blood
- Disposes of debris in the lymphatic stream
- Houses white blood cells involved with immunity



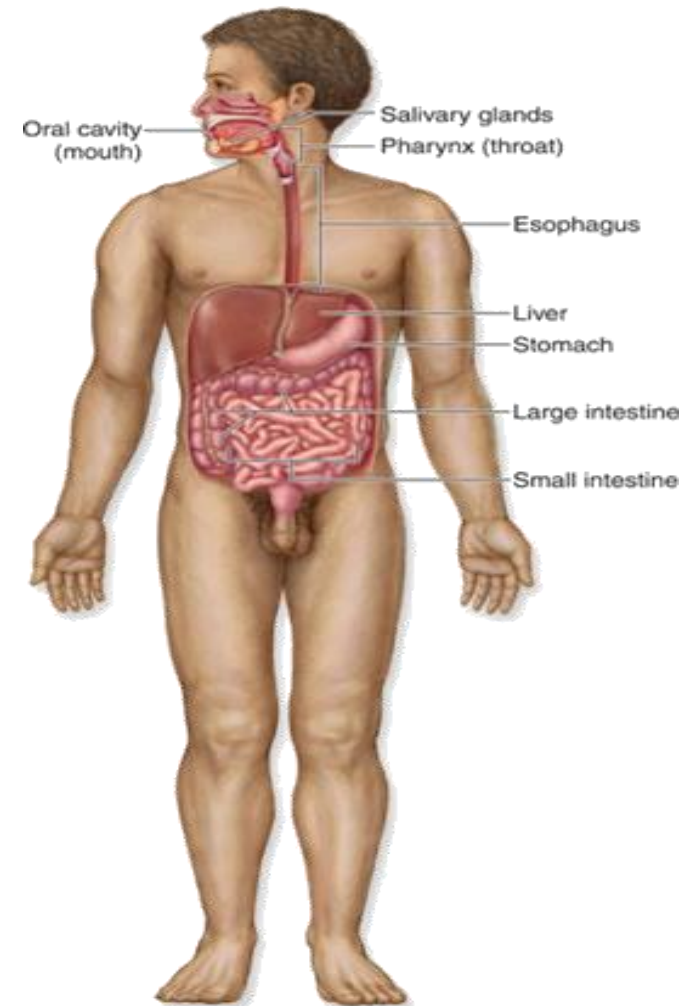
Respiratory System

- Composed of the nasal cavity, pharynx, trachea, bronchi, and lungs
- Keeps blood supplied with oxygen and removes carbon dioxide



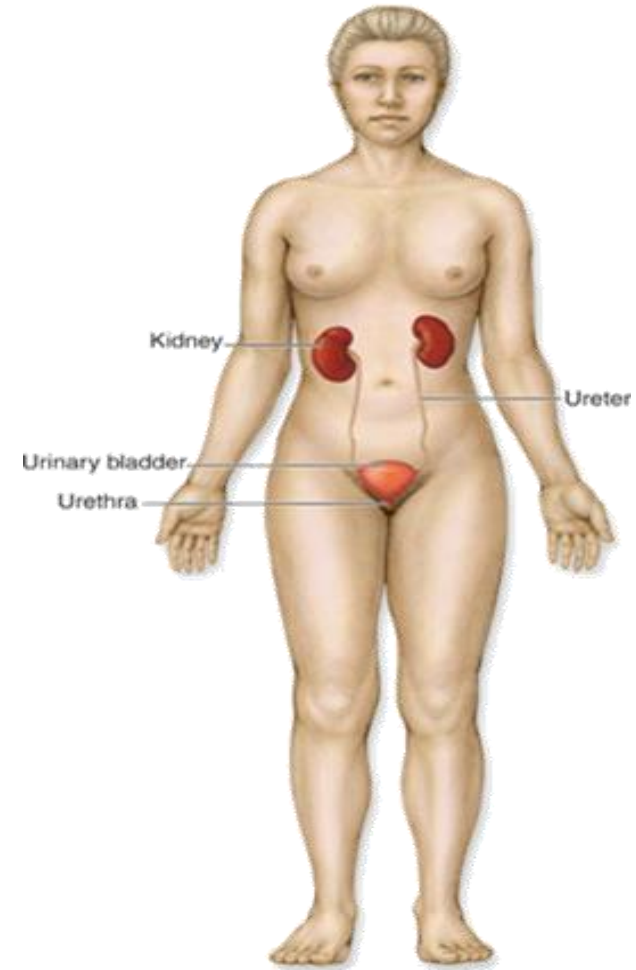
Digestive System

- Composed of the oral cavity, esophagus, stomach, small intestine, large intestine, rectum, anus
- Breaks down food into absorbable units that enter the blood
- Eliminates indigestible materials as feces



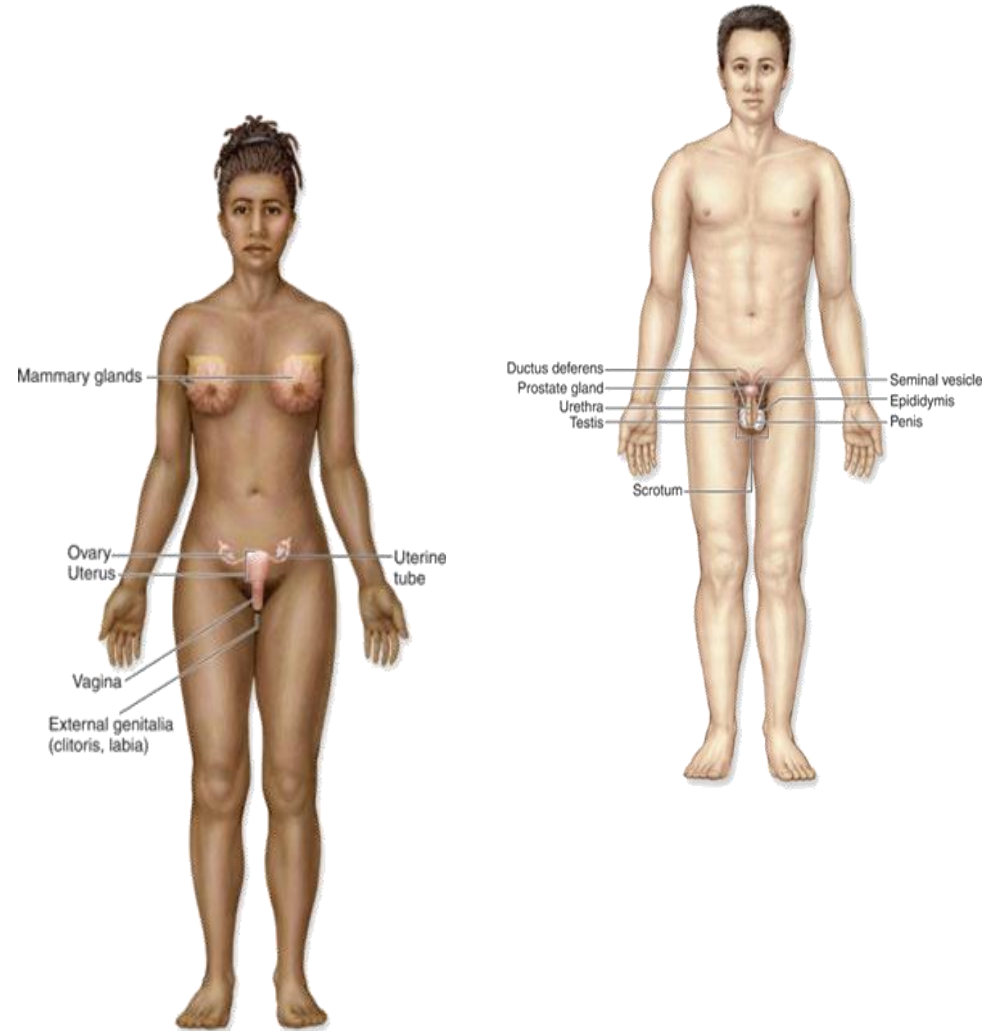
Urinary System

- Composed of kidneys, ureters, urinary bladder, and urethra
- Eliminates nitrogenous wastes from the body
- Regulates water, electrolyte, and pH balance of the blood



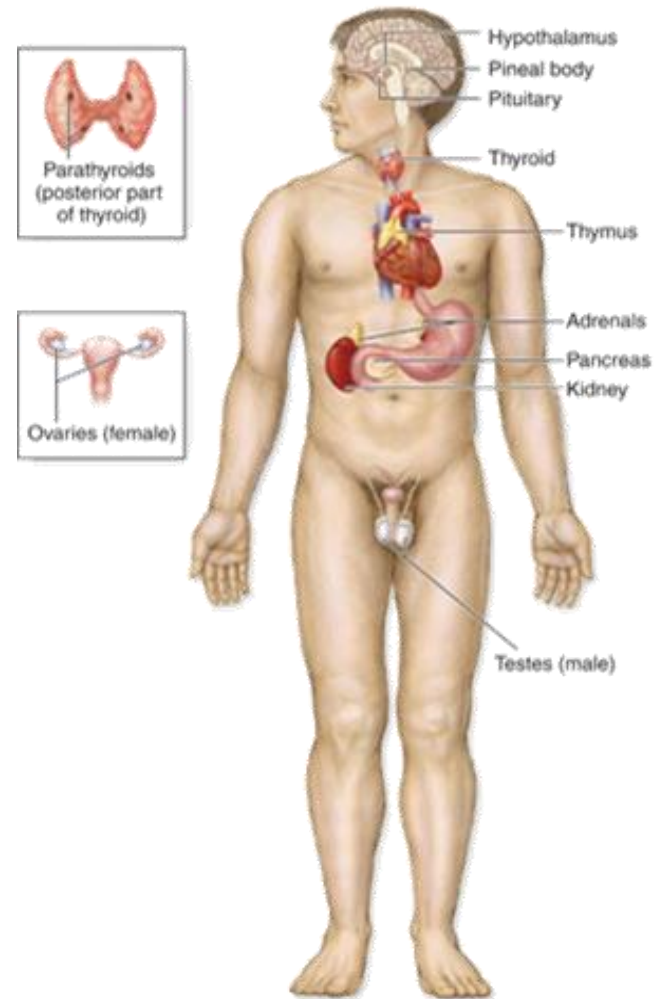
Reproductive System

- Main function is the production of offspring



Endocrine System

- Regulates body and cellular growth

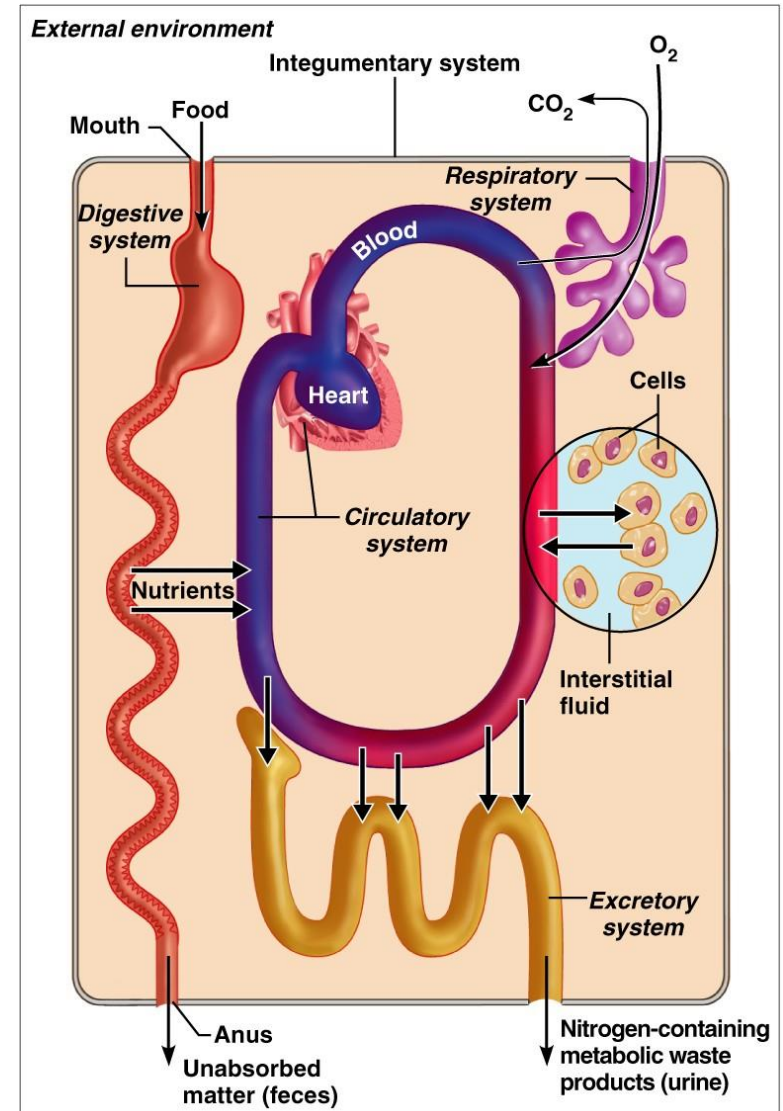


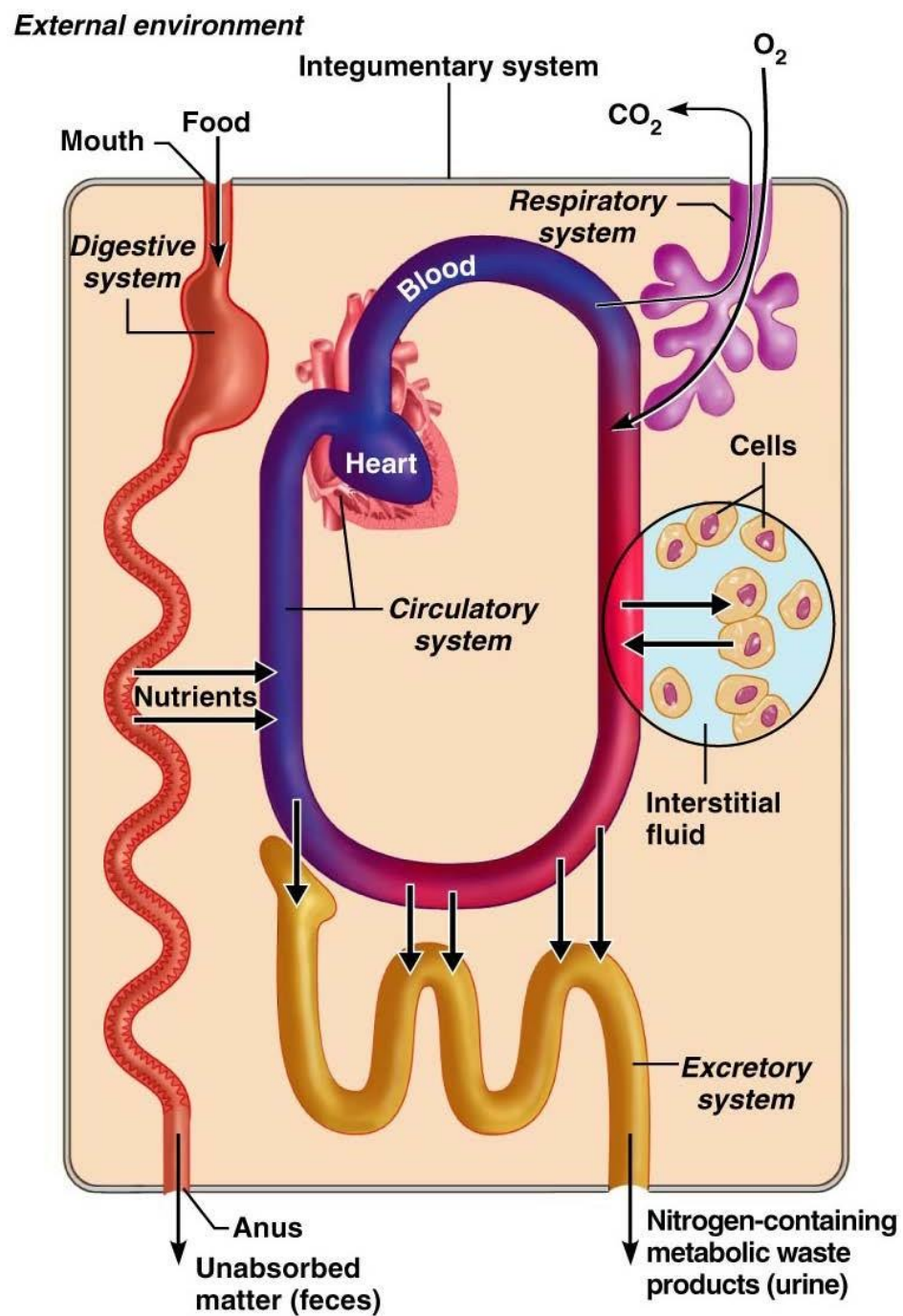
Organ Systems Interrelationships

- The integumentary system protects the body from the external environment
- Digestive and respiratory systems, in contact with the external environment, take in nutrients and oxygen

Organ Systems Interrelationships

- Nutrients and oxygen are distributed by the blood
- Metabolic wastes are eliminated by the urinary and respiratory systems





Necessary Life Functions

- Maintaining boundaries – the internal environment remains distinct from the external environment
 - Cellular level – accomplished by plasma membranes
 - Organismal level – accomplished by the skin
- Movement – locomotion, propulsion (peristalsis), and contractility

Necessary Life Functions

- Responsiveness – ability to sense changes in the environment and respond to them
- Digestion – breakdown of ingested foodstuffs
- Metabolism – all the chemical reactions that occur in the body
- Excretion – removal of wastes from the body

Necessary Life Functions

- Reproduction – cellular and organismal levels
 - Cellular – an original cell divides and produces two identical daughter cells
 - Organismal – sperm and egg unite to make a whole new person
- Growth – increase in cell size and number

Survival Needs

- Nutrients – needed for energy and cell building
- Oxygen – necessary for metabolic reactions
- Water – provides the necessary environment for chemical reactions
- Normal body temperature – necessary for chemical reactions to occur at life-sustaining rates
- Atmospheric pressure – required for proper breathing and gas exchange in the lungs

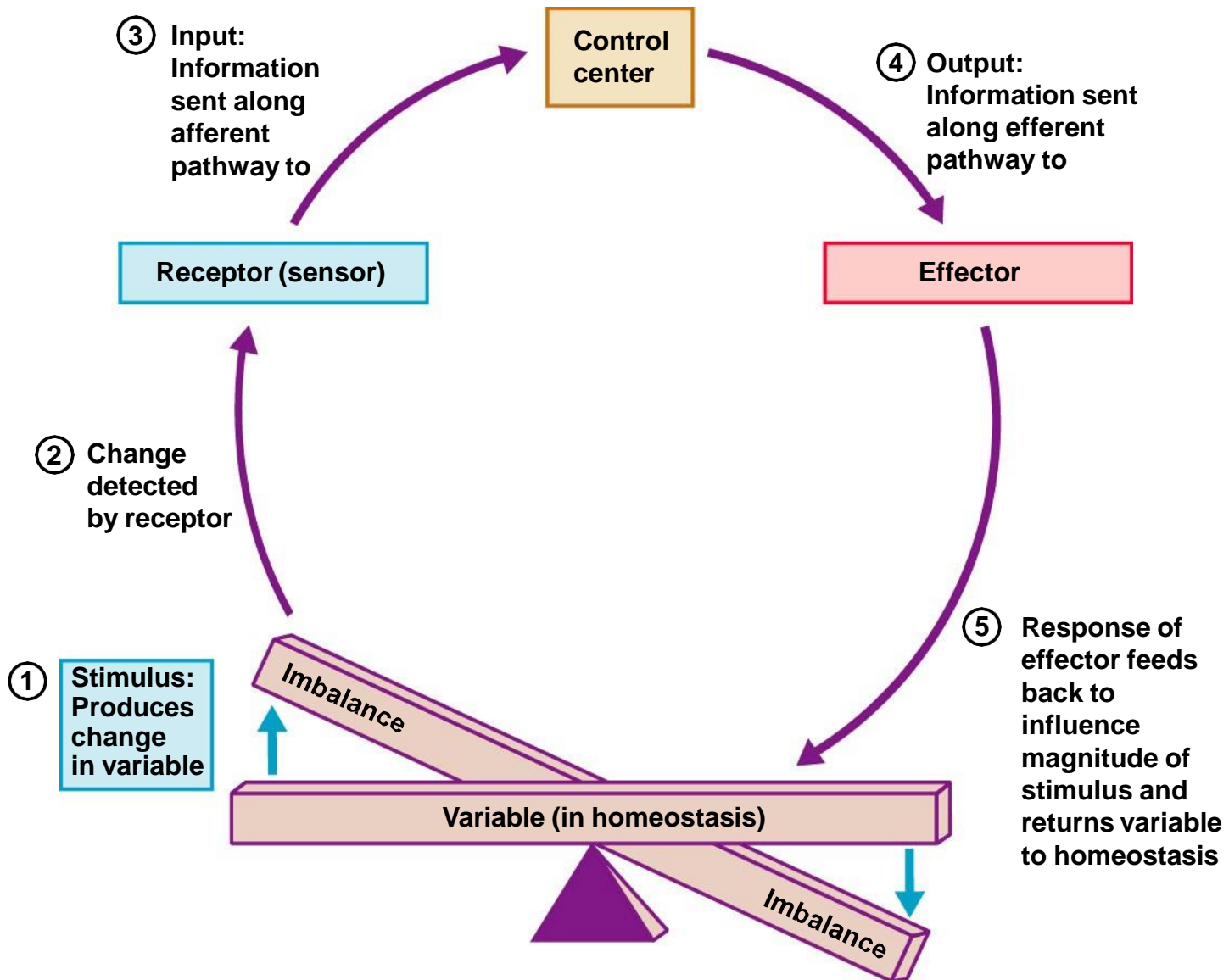
Homeostasis

- Homeostasis – ability to maintain a relatively stable internal environment in an ever-changing outside world
- The internal environment of the body is in a dynamic state of equilibrium
- Chemical, thermal, and neural factors interact to maintain homeostasis

Homeostatic Control Mechanisms

- Variables produce a change in the body
- The three interdependent components of control mechanisms:
 - **Receptor** – monitors the environments and responds to changes (stimuli)
 - **Control center** – determines the set point at which the variable is maintained
 - **Effector** – provides the means to respond to stimuli

Homeostatic Control Mechanisms



Negative Feedback

- In negative feedback systems, the output shuts off the original stimulus
- Example: Regulation of room temperature

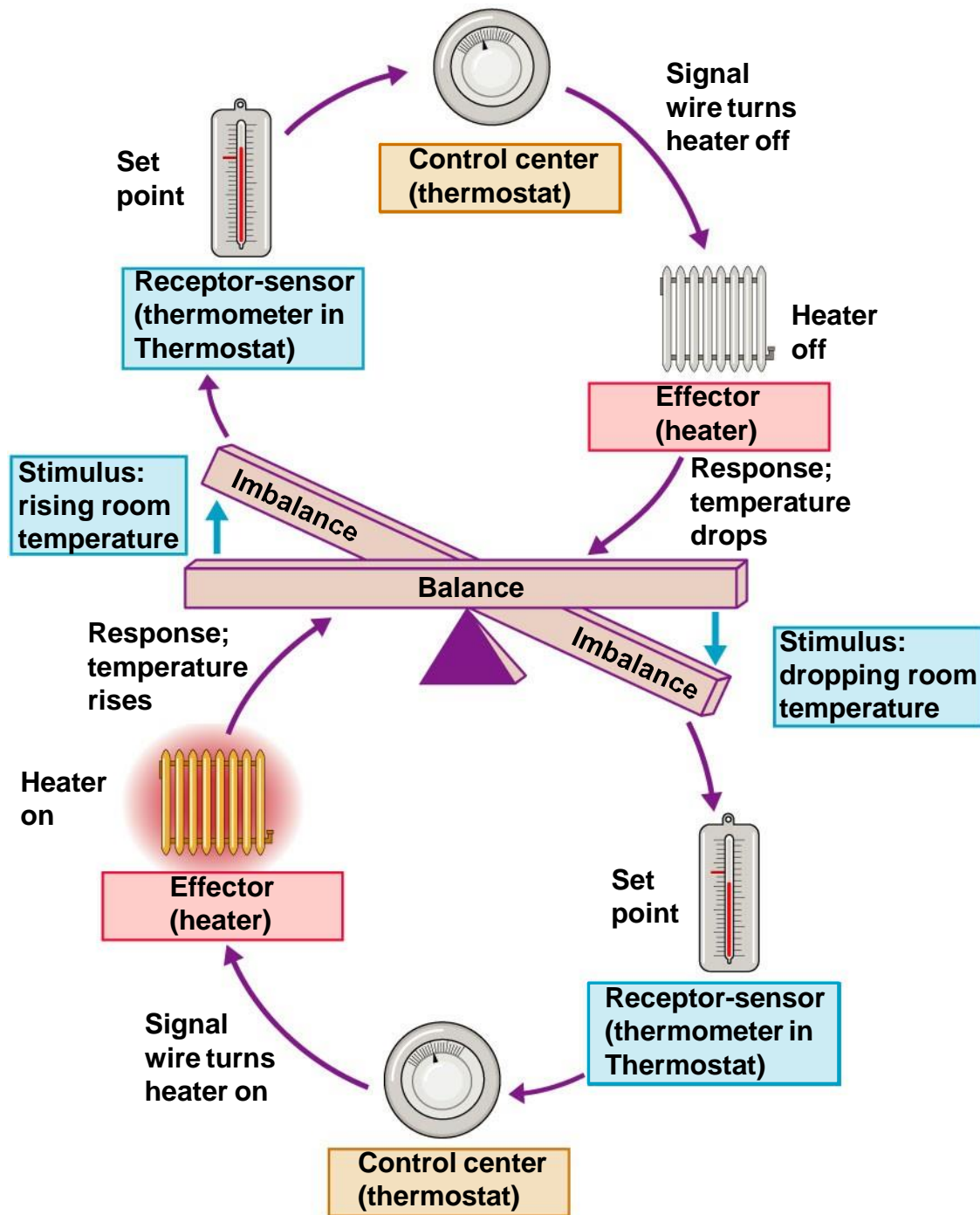
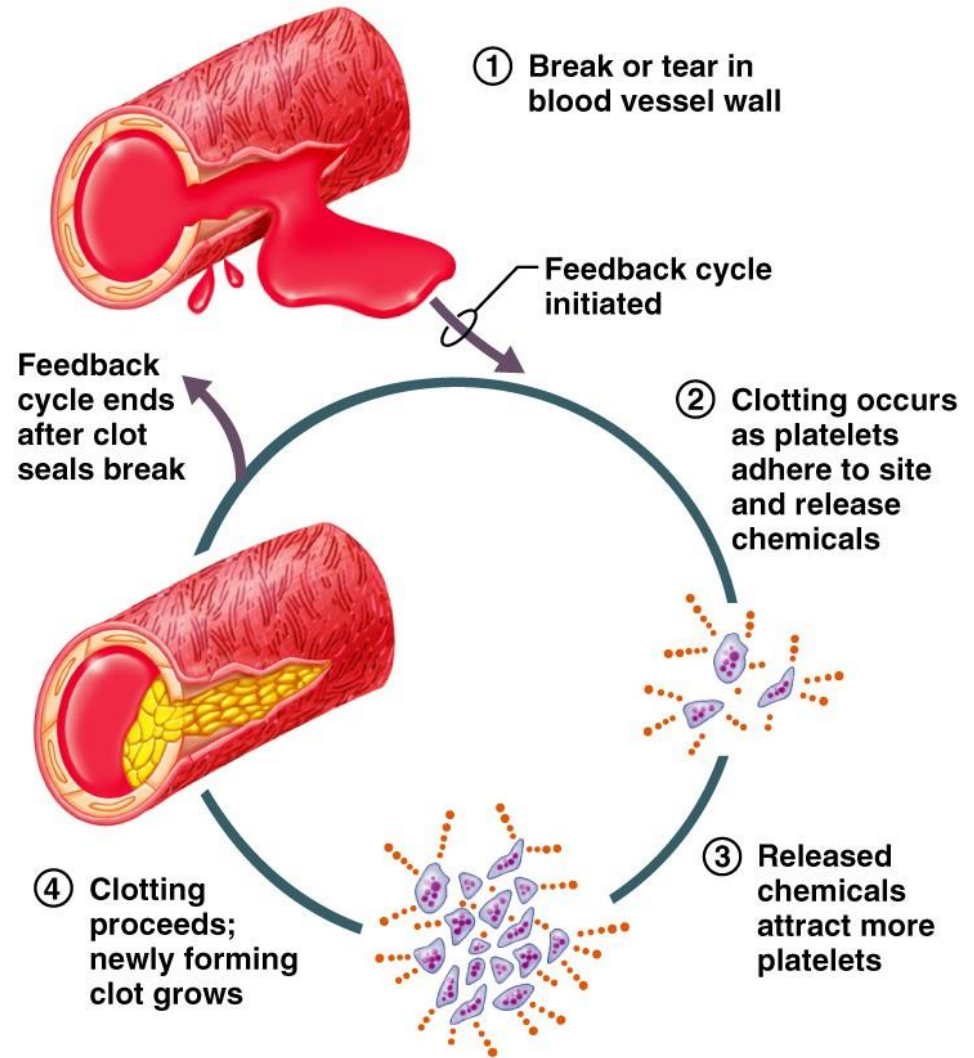
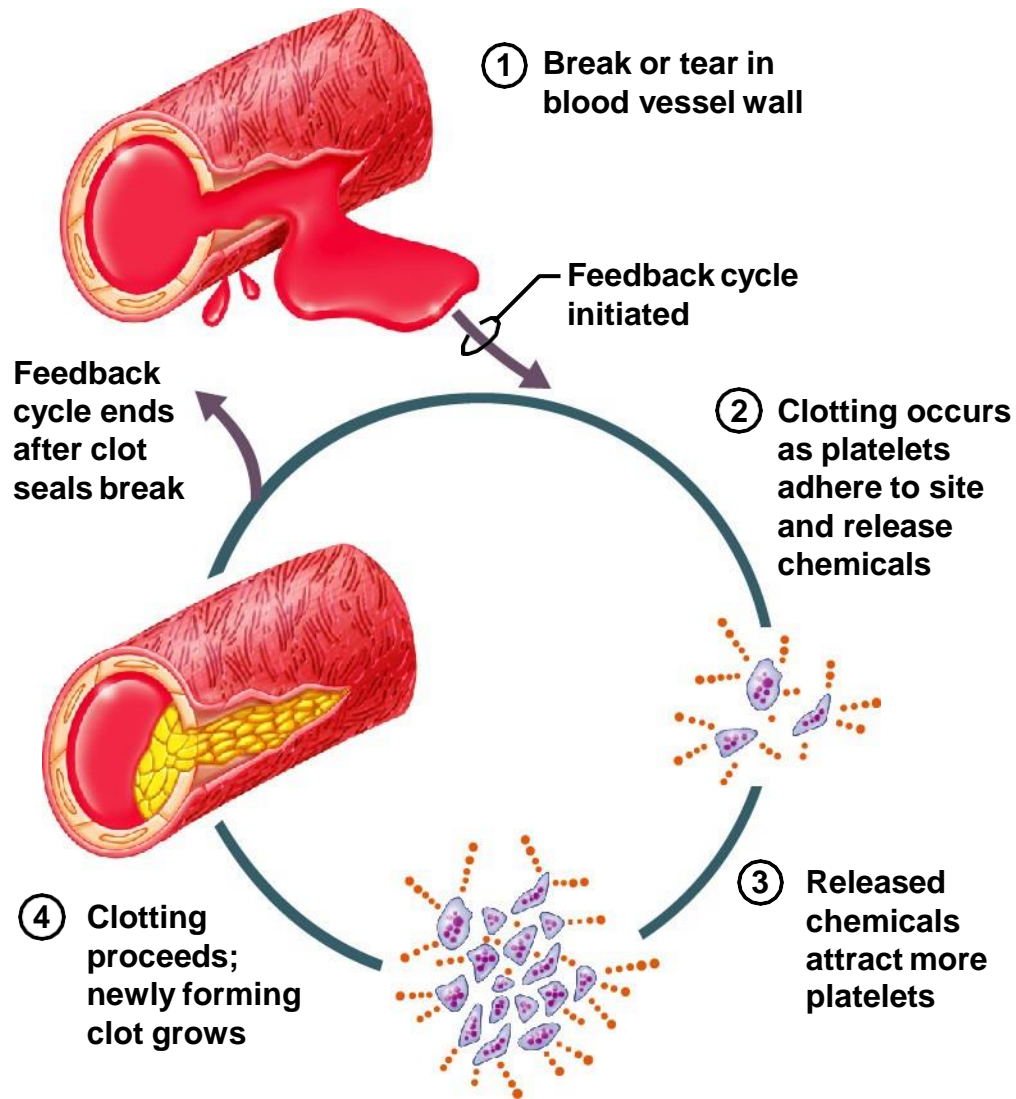


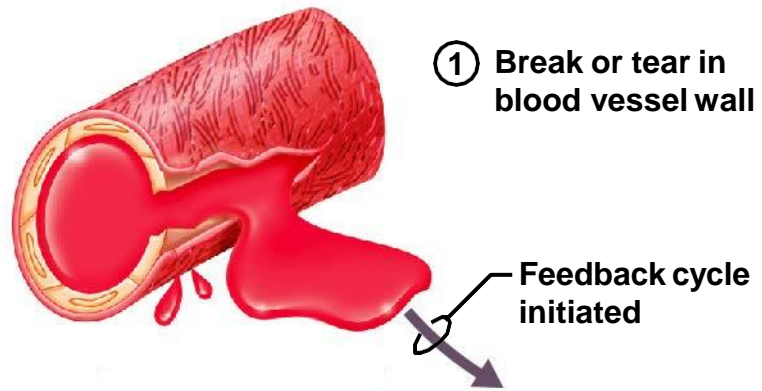
Figure 1.5

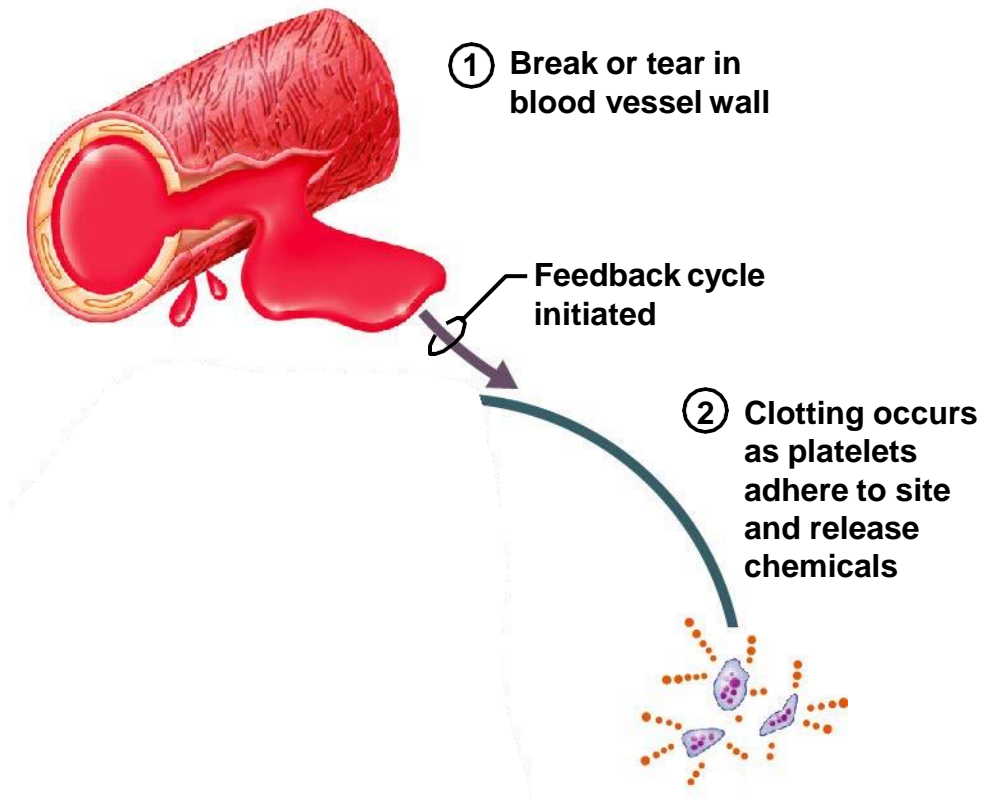
Positive Feedback

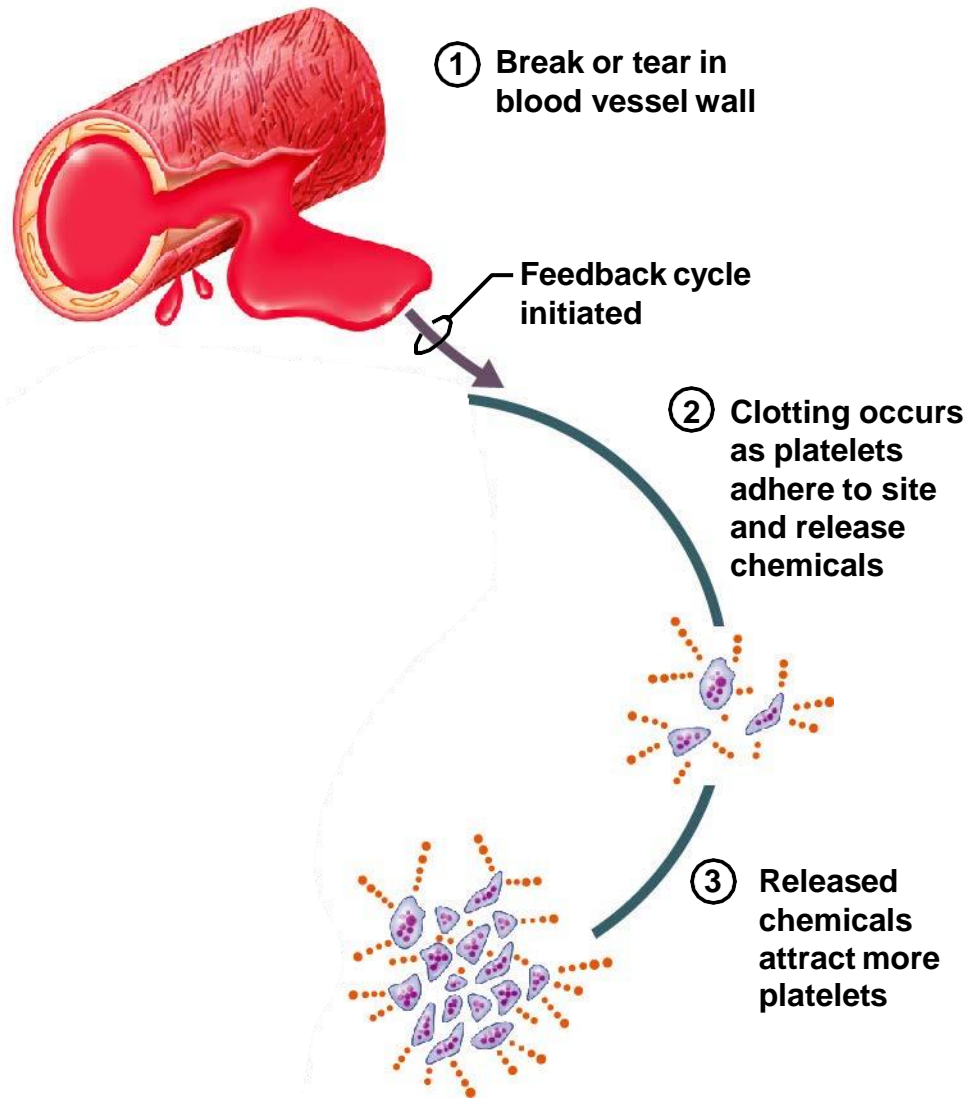
- In positive feedback systems, the output enhances or exaggerates the original stimulus
- Example: Regulation of blood clotting

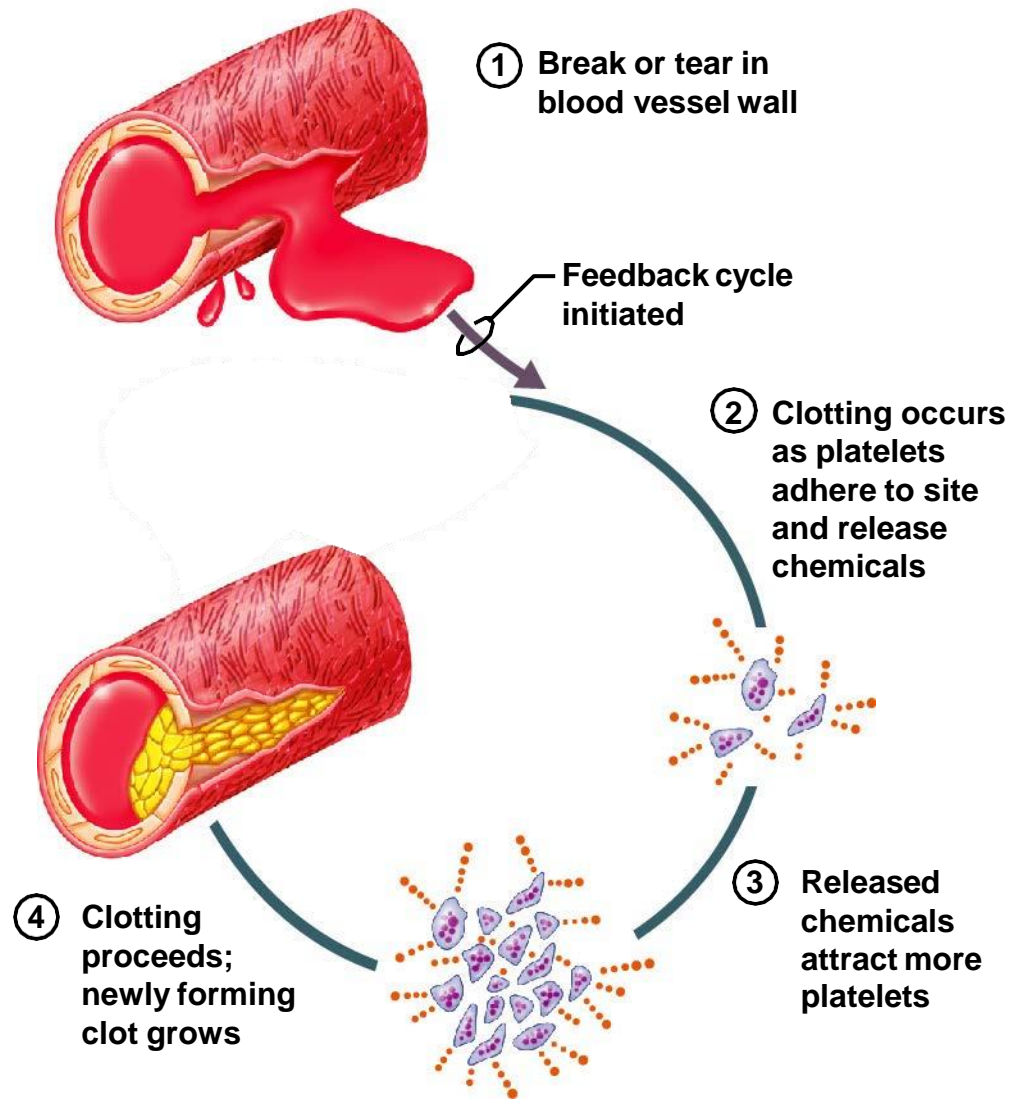


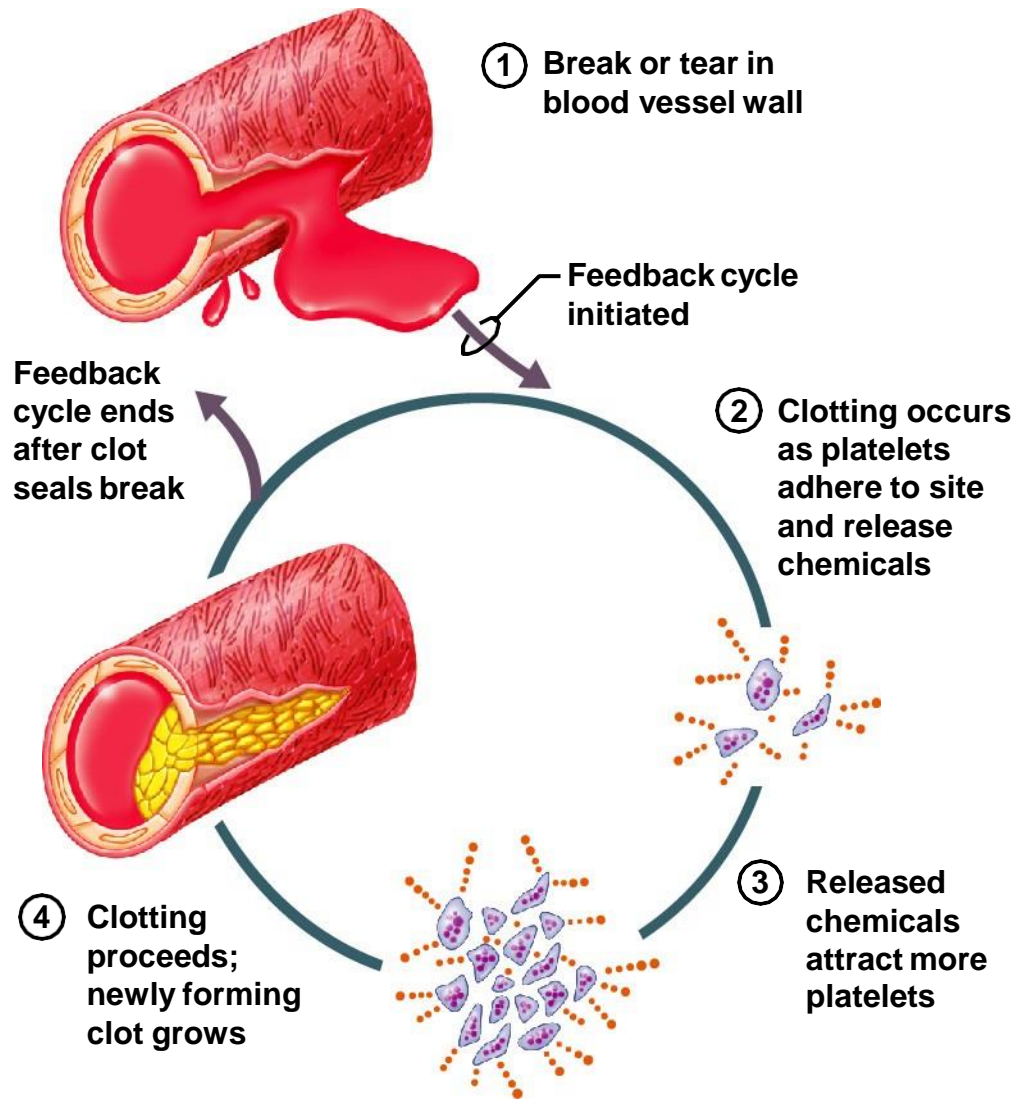












Homeostatic Imbalance

- Disturbance of homeostasis or the body's normal equilibrium
- Overwhelming the usual negative feedback mechanisms allows destructive positive feedback mechanisms to take over

Thank You