

Elaine N. Marieb  
Katja Hoehn



# Human Anatomy & Physiology

SEVENTH EDITION

Copyright © 2006 Pearson Education, Inc., publishing as Benjamin Cummings

PowerPoint® Lecture Slides  
prepared by Vince Austin,  
Bluegrass Technical  
and Community College

CHAPTER

1

PART A

## The Human Body: An Orientation

---

# Overview of Anatomy and Physiology

- Anatomy – the study of the structure of body parts and their relationships to one another
  - **Gross or macroscopic** (the study of large body structures visible to the naked eye i.e. heart, lung etc.)
  - **Microscopic** ( structures that are too small to be seen with naked eye, i.e. thin slices of body tissues)
  - **Developmental** ( traces structural changes that occur in the body throughout the life span)
- Physiology – the study of the function of the body's structural machinery

---

# Gross Anatomy

- Regional – all structures in one part of the body (such as the abdomen or leg)
- Systemic – gross anatomy of the body studied system by system
- Surface – study of internal structures as they relate to the overlying skin

---

# Microscopic Anatomy

- Cytology – study of the cell
- Histology – study of tissues

---

# Developmental Anatomy

- Traces structural changes throughout life
- Embryology – study of developmental changes of the body before birth

---

# Specialized Branches of Anatomy

- Pathological anatomy – study of structural changes caused by disease
- Radiographic anatomy – study of internal structures visualized by specialized scanning procedures such as X-ray, MRI, and CT scans
- Molecular biology – study of anatomical structures at a subcellular level

---

# Physiology

- Considers the operation of specific organ systems (talks about the function of the organs)
  - Renal – kidney function
  - Neurophysiology – workings of the nervous system
  - Cardiovascular – operation of the heart and blood vessels
- Focuses on the functions of the body, often at the cellular or molecular level

---

# Physiology

- Understanding physiology also requires a knowledge of physics, which explains
  - electrical currents
  - blood pressure
  - the way muscle uses bone for movement



---

# Principle of Complementarity

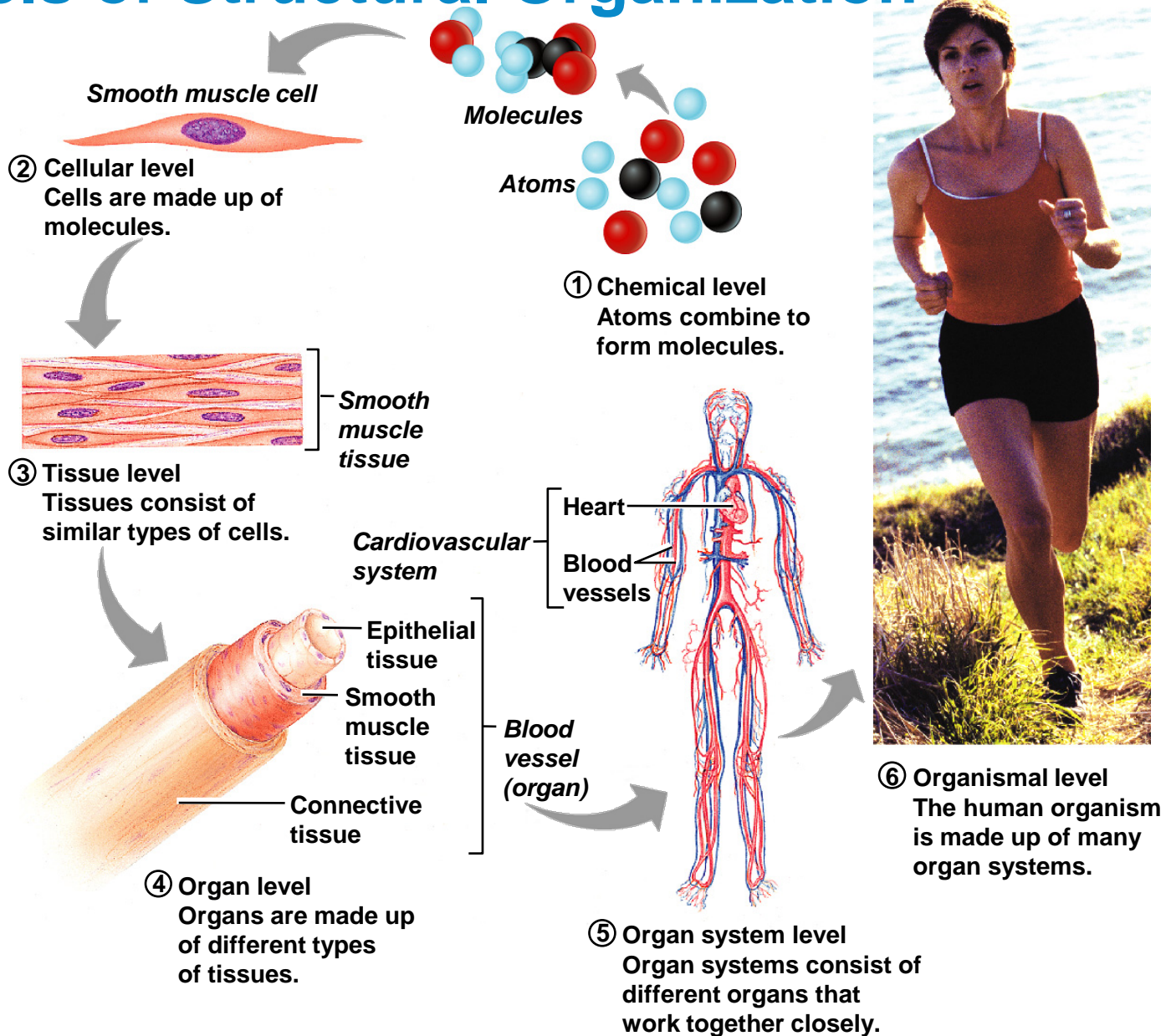
- Function always reflects structure
- What a structure can do depends on its specific form
- Physiology and anatomy are related to each other and they are inseparable.

---

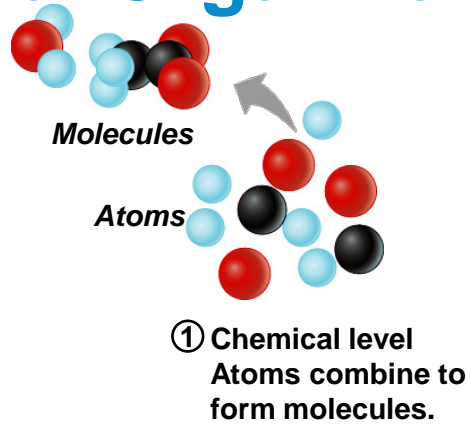
# Levels of Structural Organization

- Chemical – atoms combined to form molecules
- Cellular – cells are made of molecules
- Tissue – consists of similar types of cells
- Organ – made up of different types of tissues
- Organ system – consists of different organs that work closely together
- Organismal – made up of the organ systems

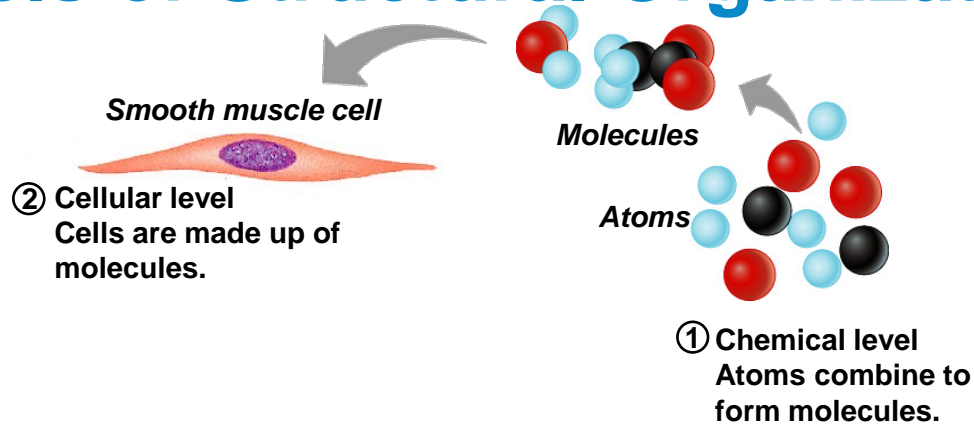
# Levels of Structural Organization



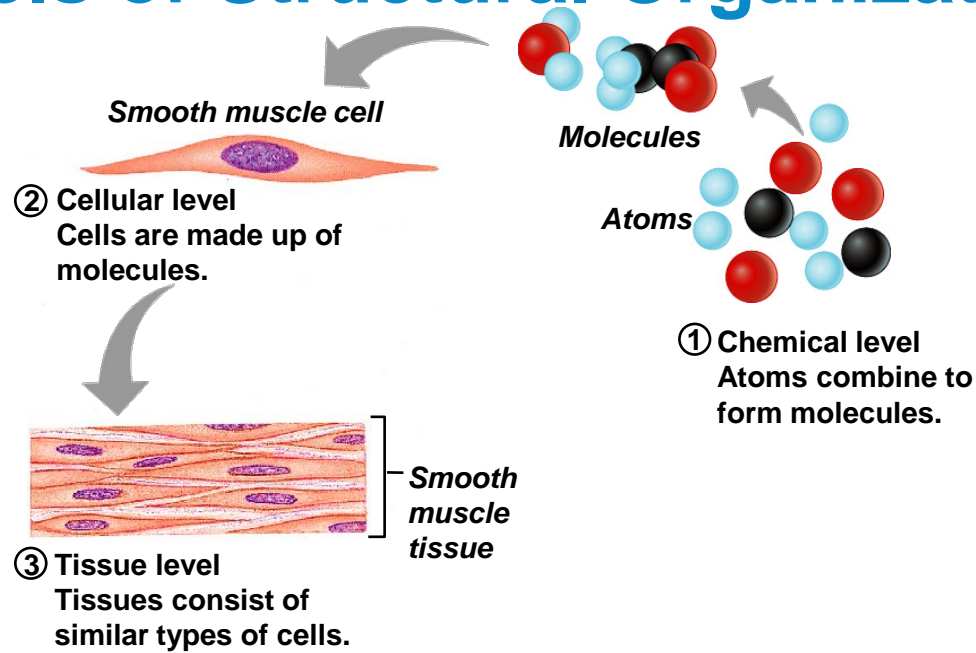
# Levels of Structural Organization



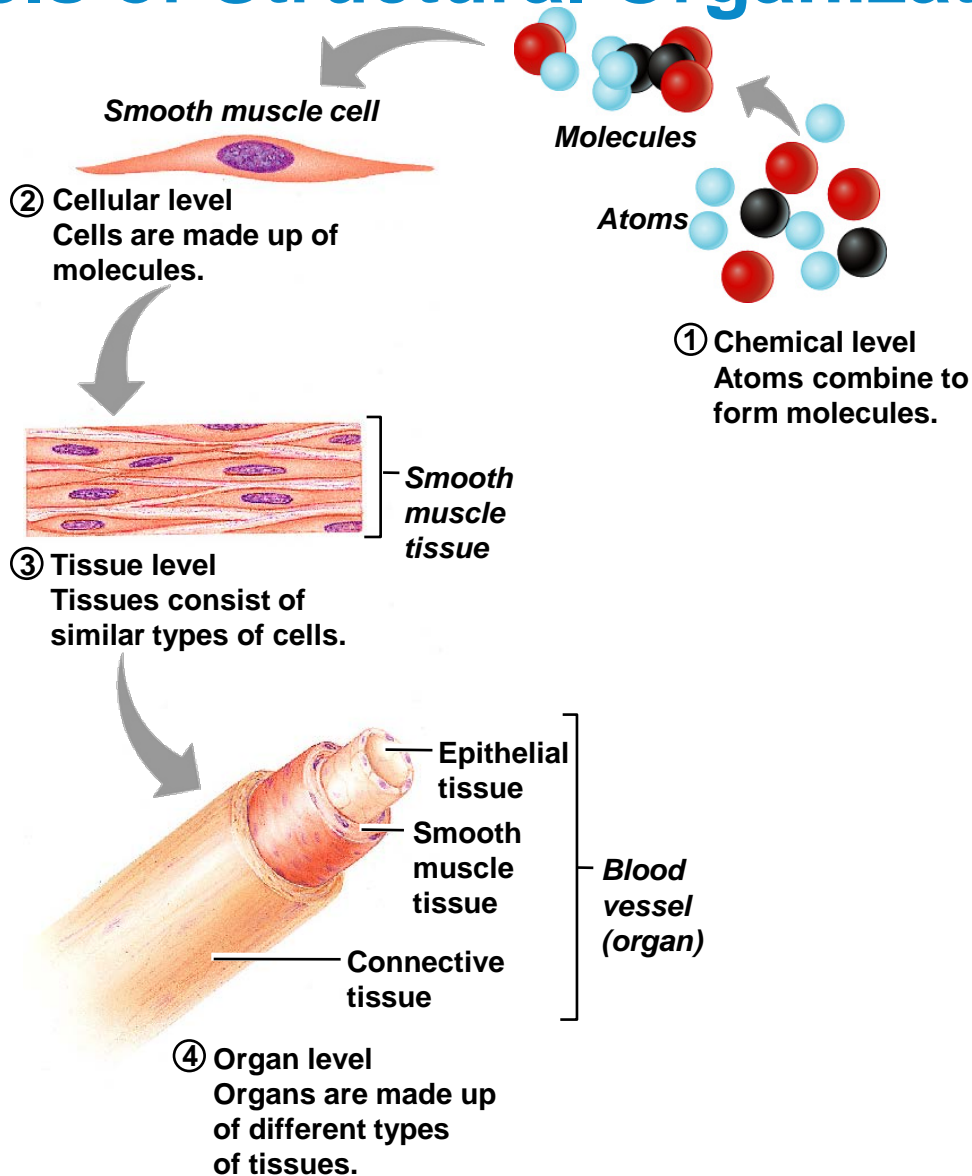
# Levels of Structural Organization



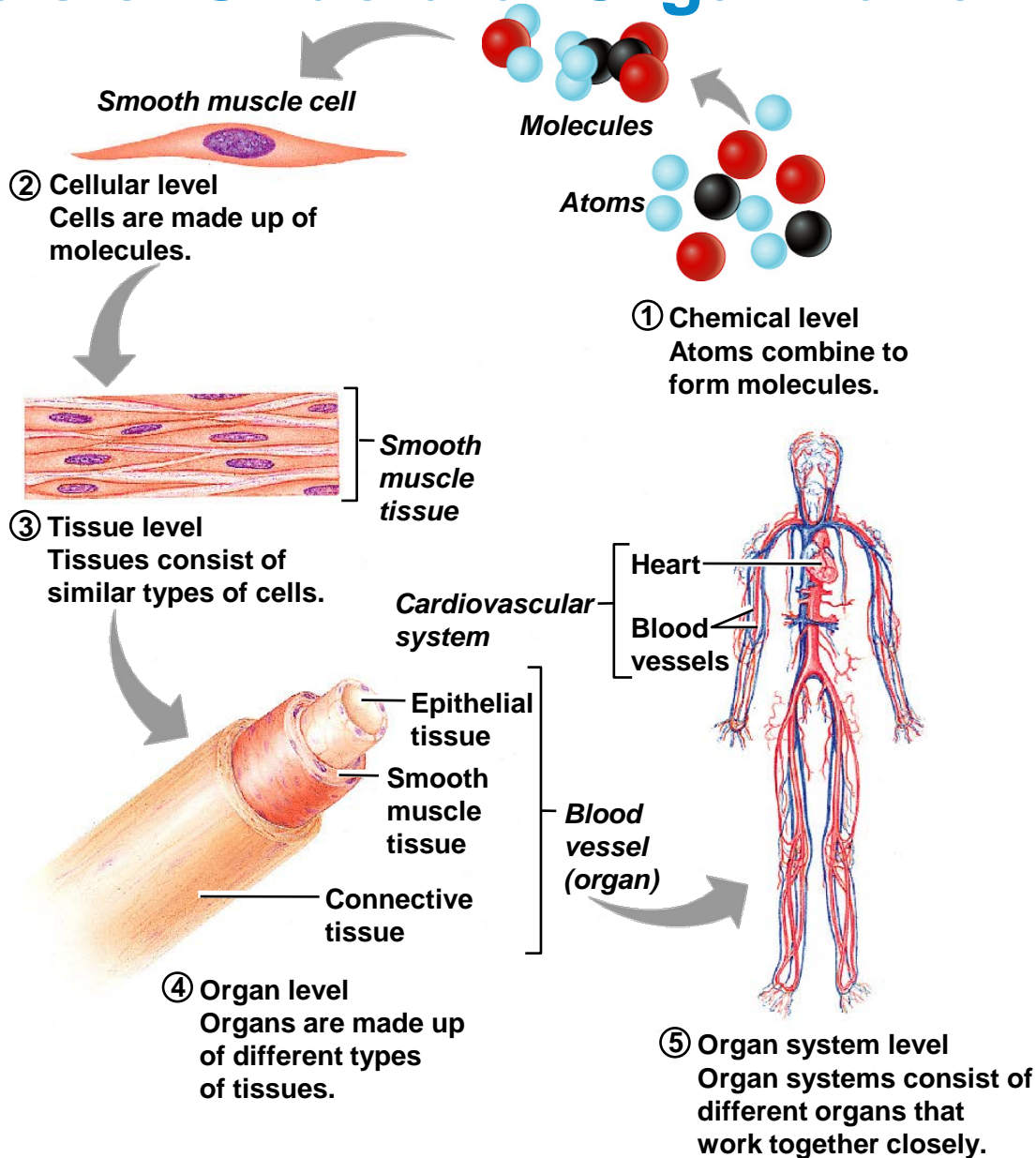
# Levels of Structural Organization



# Levels of Structural Organization

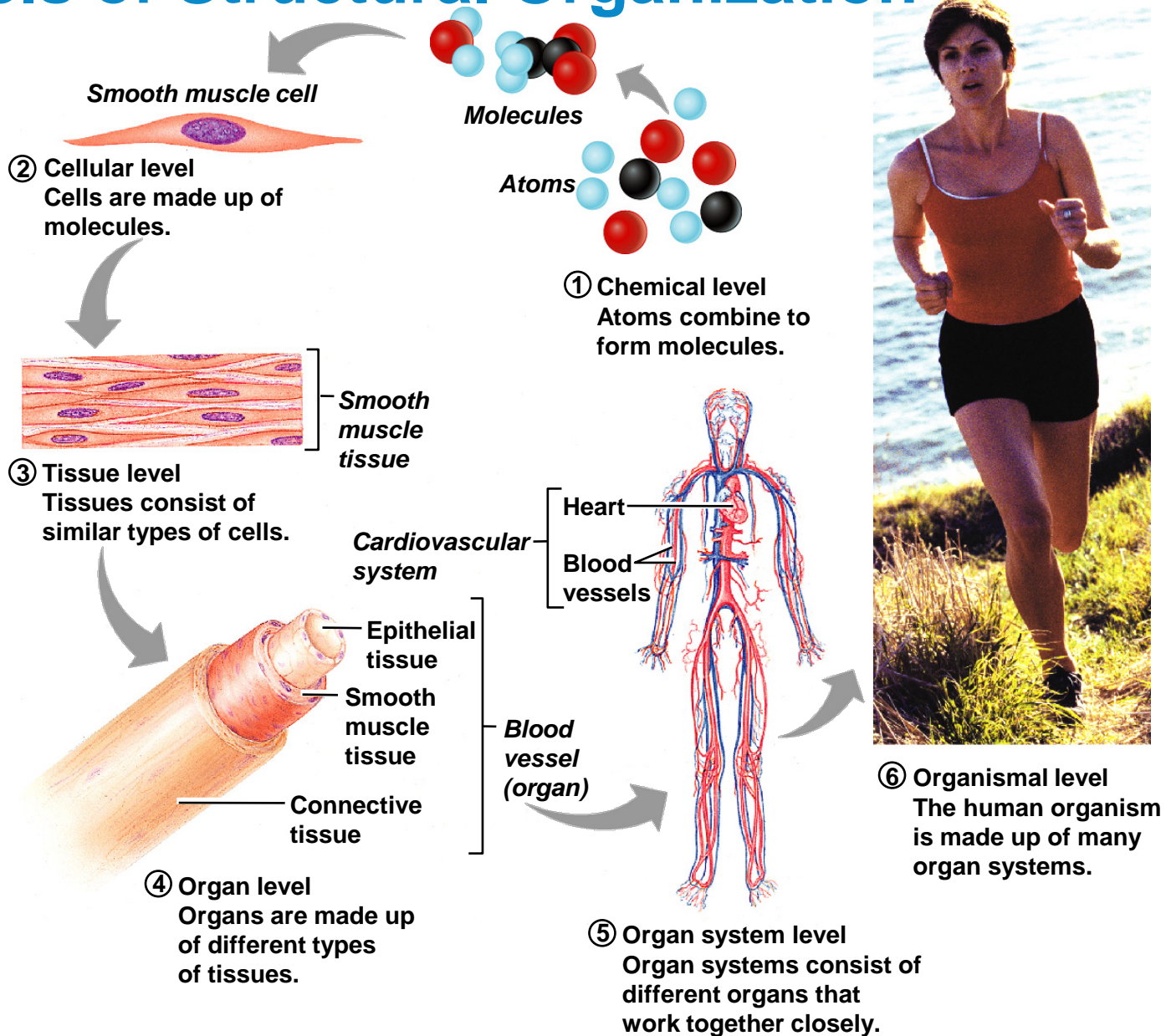


# Levels of Structural Organization





# Levels of Structural Organization



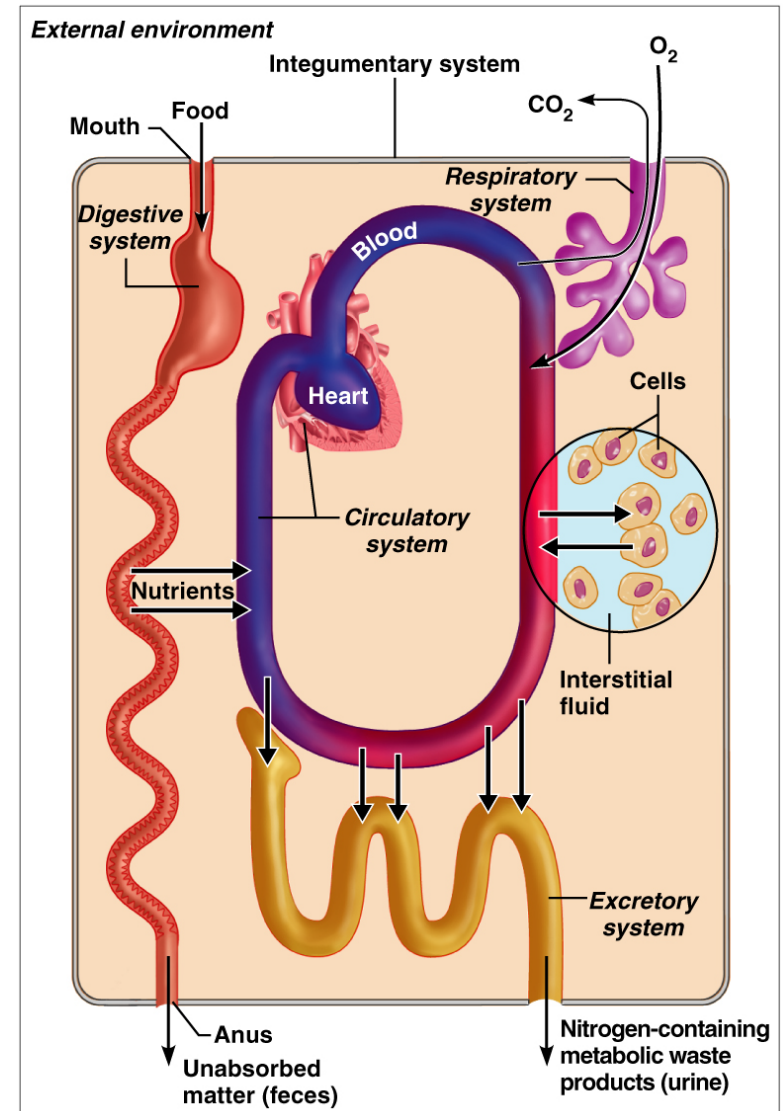
---

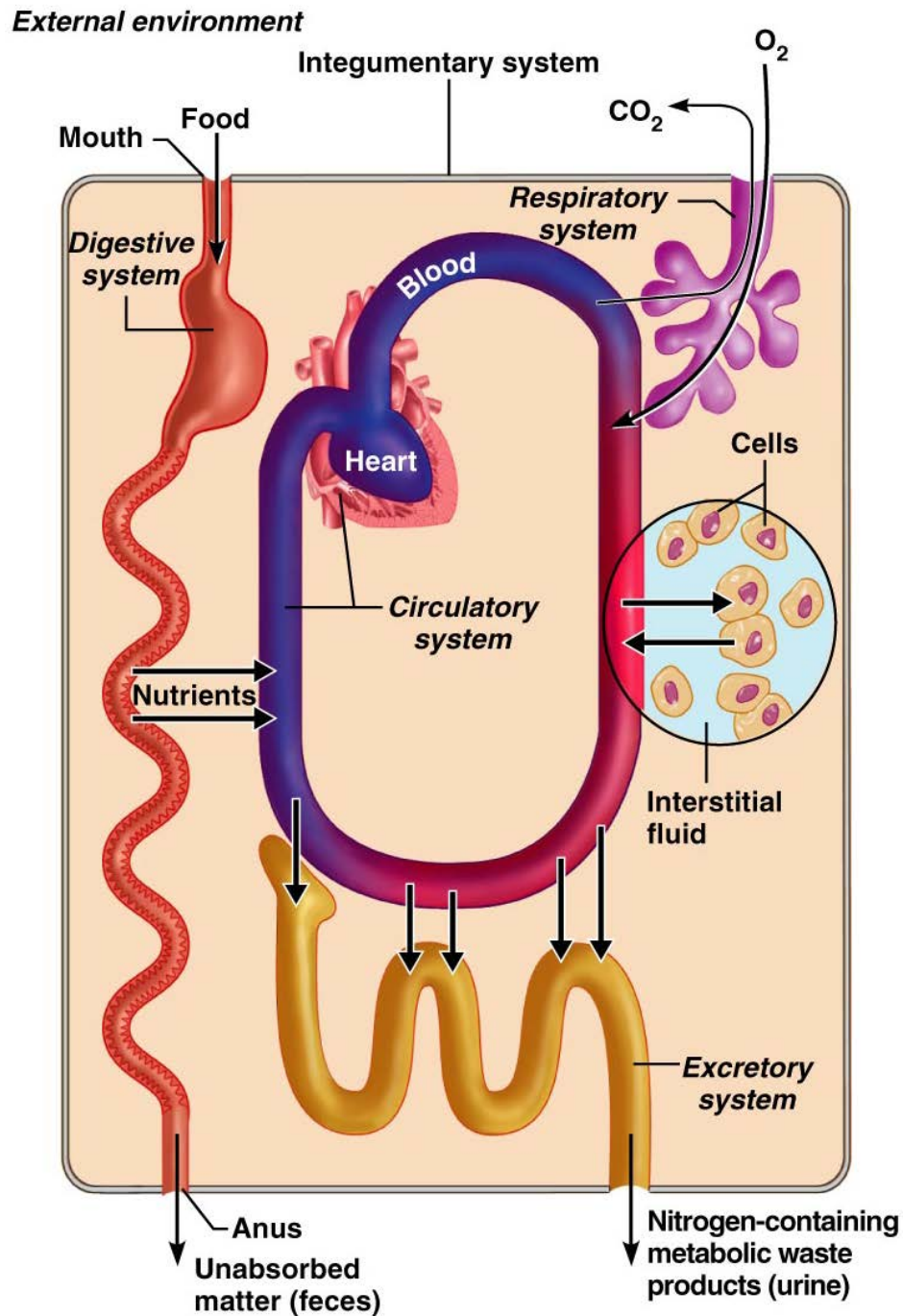
# Organ Systems Interrelationships

- The integumentary system protects the body from the external environment
- Digestive and respiratory systems, in contact with the external environment, take in nutrients and oxygen

# Organ Systems Interrelationships

- Nutrients and oxygen are distributed by the blood
- Metabolic wastes are eliminated by the urinary and respiratory systems





---

# Necessary Life Functions

- Maintaining boundaries – the internal environment remains distinct from the external environment
  - Cellular level – accomplished by plasma membranes
  - Organismal level – accomplished by the skin
- Movement – locomotion, propulsion (peristalsis), and contractility

---

# Necessary Life Functions

- Responsiveness – ability to sense changes in the environment and respond to them
- Digestion – breakdown of ingested foodstuffs
- Metabolism – all the chemical reactions that occur in the body
- Excretion – removal of wastes from the body

---

# Necessary Life Functions

- Reproduction – cellular and organismal levels
  - Cellular – an original cell divides and produces two identical daughter cells
  - Organismal – sperm and egg unite to make a whole new person
- Growth – increase in size of a body part or of the organism

---

# Survival Needs

- Nutrients – needed for energy and cell building
- Oxygen – necessary for metabolic reactions
- Water – provides the necessary environment for chemical reactions
- Normal body temperature – necessary for chemical reactions to occur at life-sustaining rates
- Atmospheric pressure – required for proper breathing and gas exchange in the lungs



---

# Homeostasis

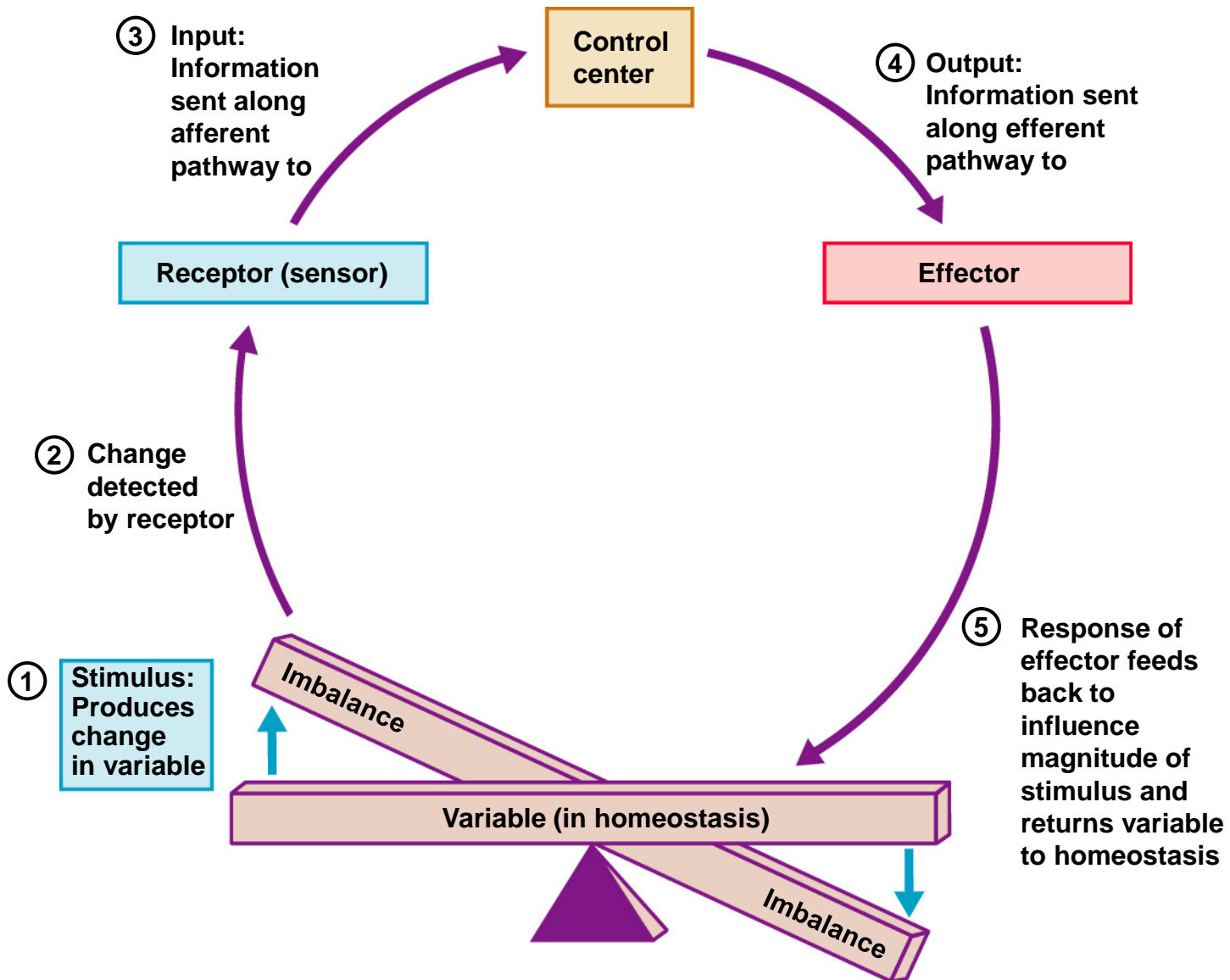
- Homeostasis – ability to maintain a relatively stable internal environment in an ever-changing outside world
- The internal environment of the body is in a dynamic state of equilibrium
- Chemical, thermal, and neural factors interact to maintain homeostasis

---

# Homeostatic Control Mechanisms

- Variables produce a change in the body
- The three interdependent components of control mechanisms:
  - Receptor – monitors the environments and responds to changes (stimuli)
  - Control center – determines the set point at which the variable is maintained
  - Effector – provides the means to respond to stimuli

# Homeostatic Control Mechanisms



---

# Negative Feedback

- In negative feedback systems, the output shuts off the original stimulus
- Example: Regulation of room temperature

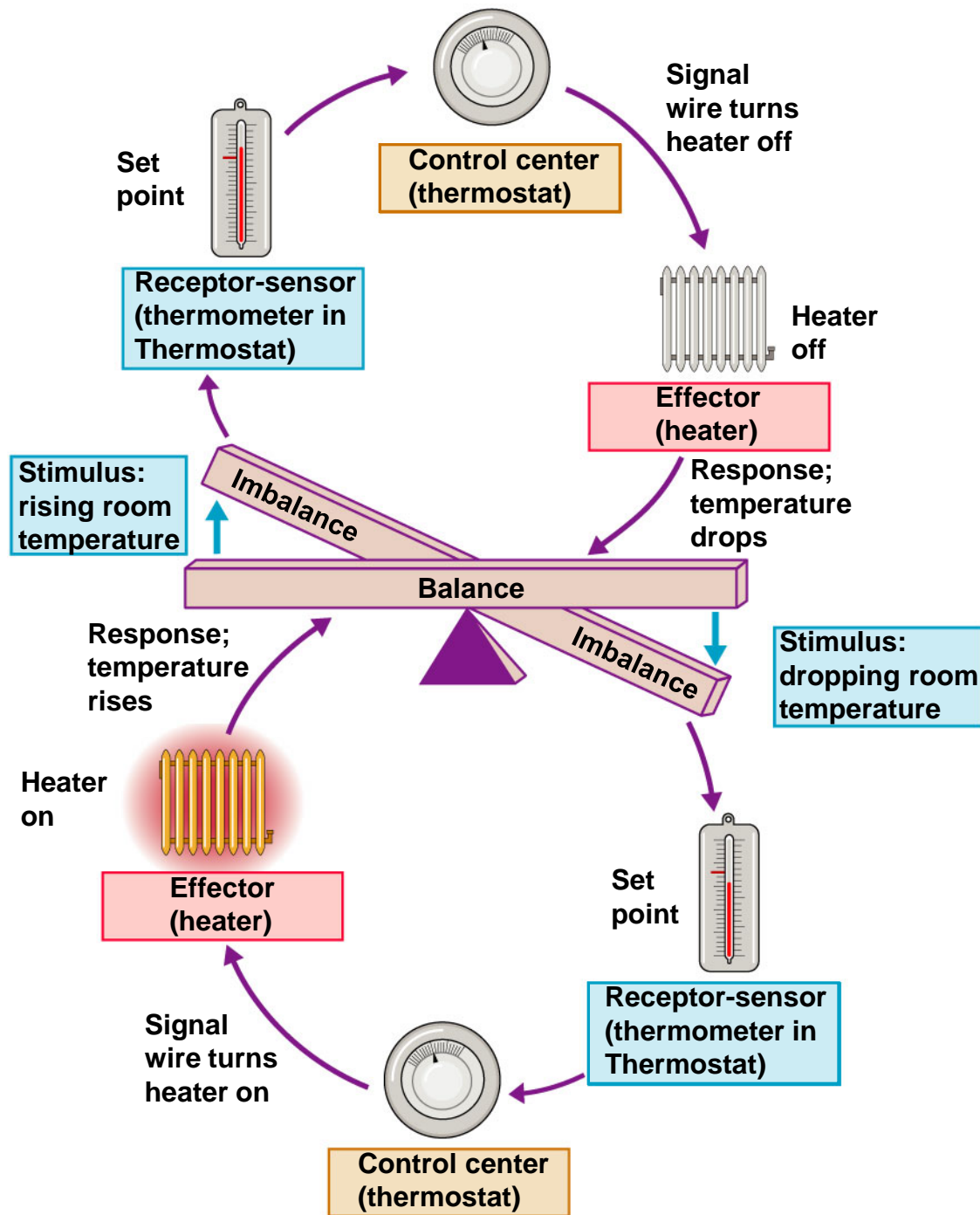
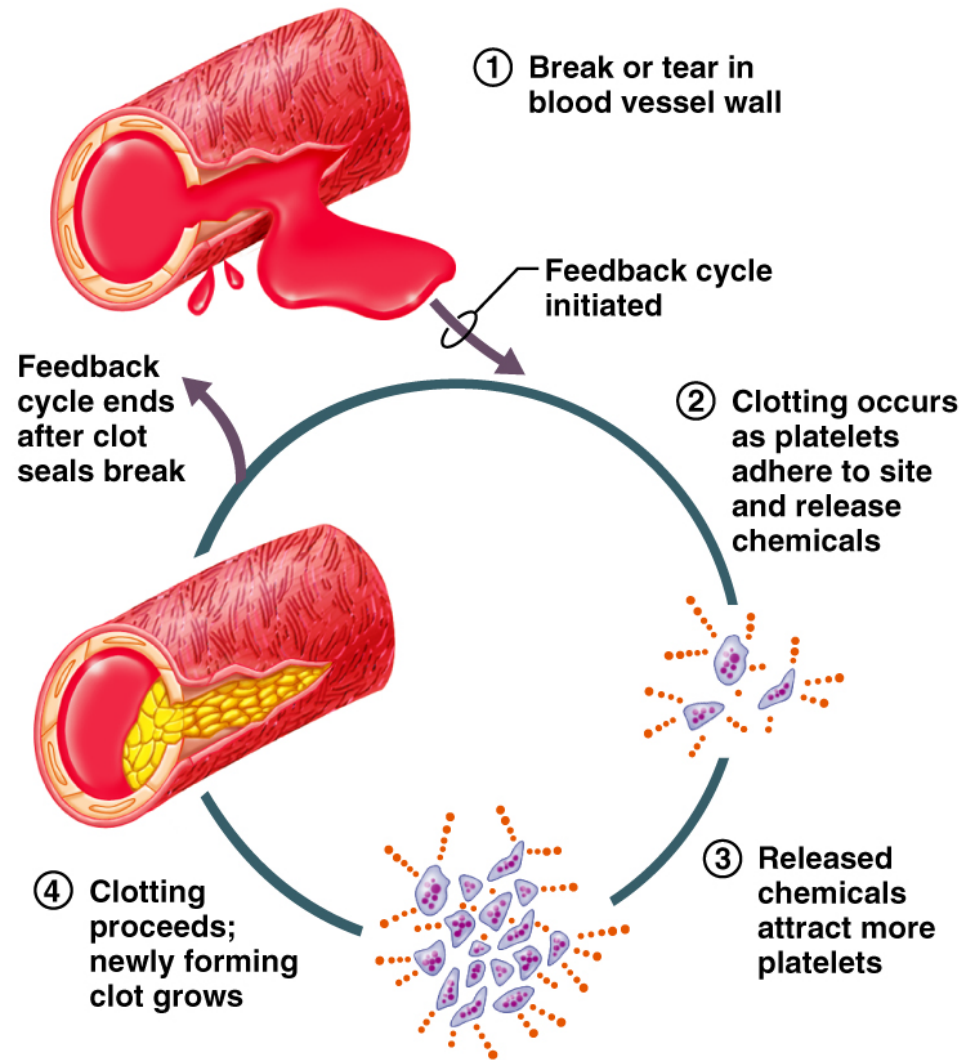
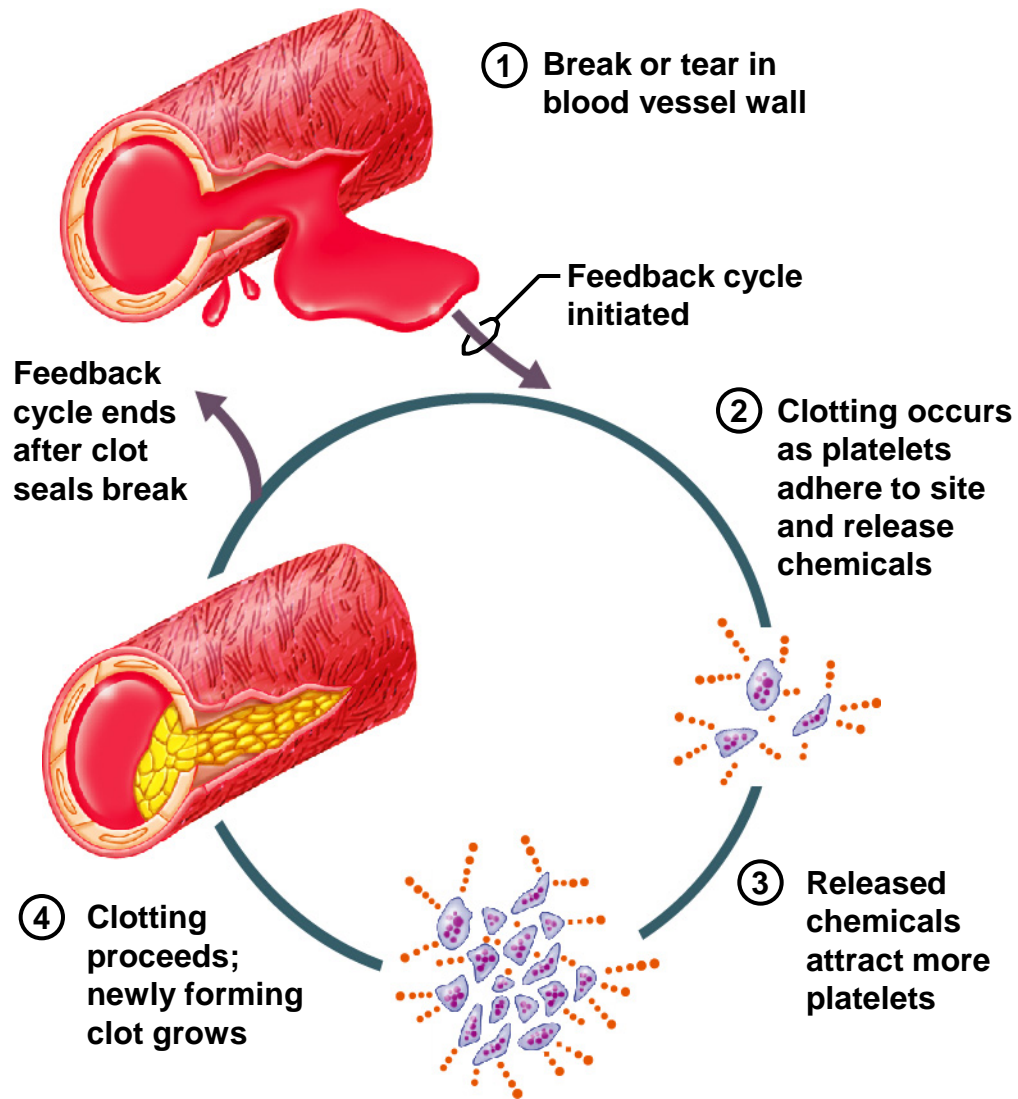


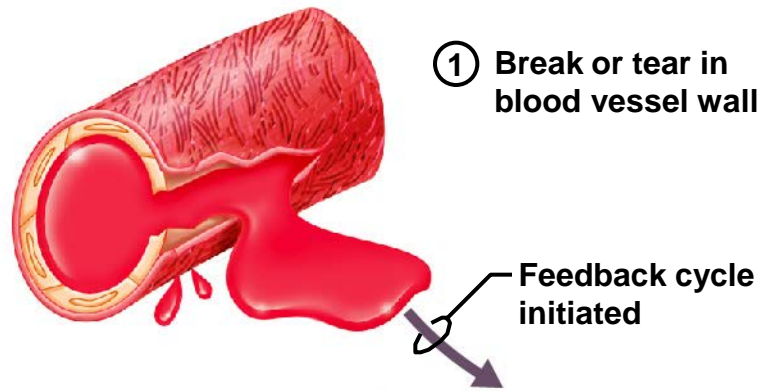
Figure 1.5

# Positive Feedback

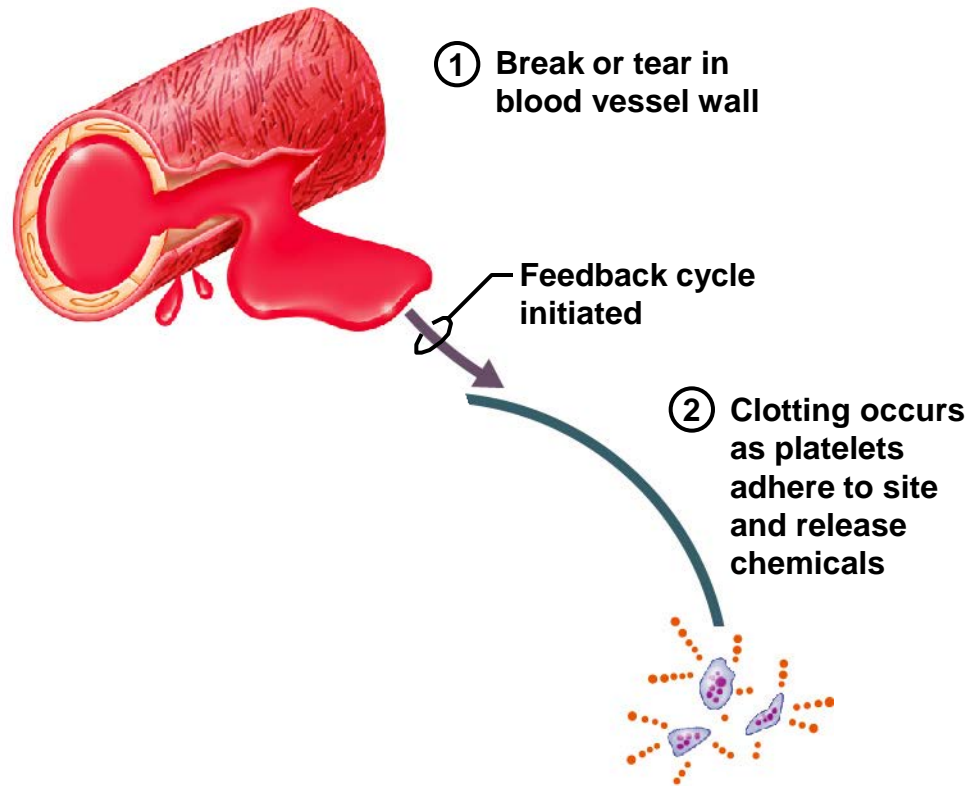
- In positive feedback systems, the output enhances or exaggerates the original stimulus
- Example: Regulation of blood clotting

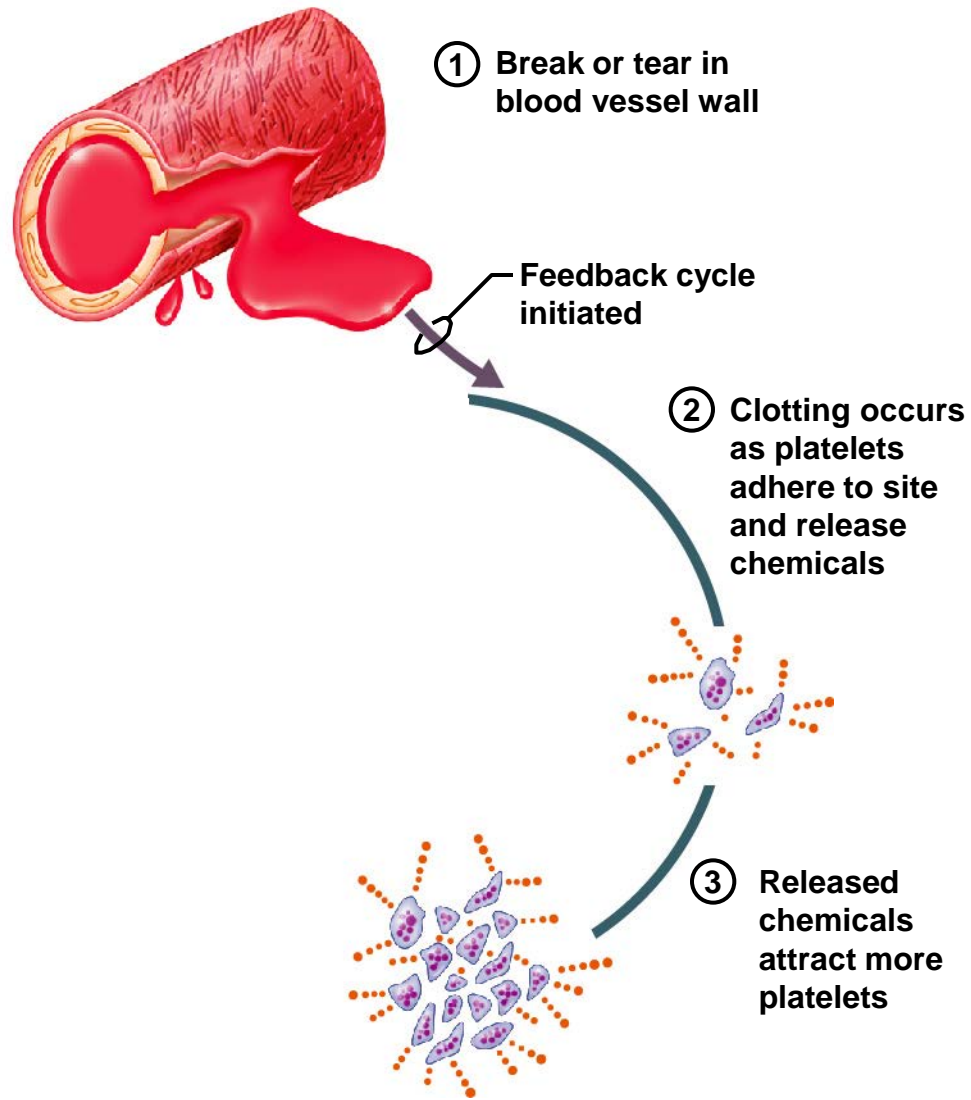


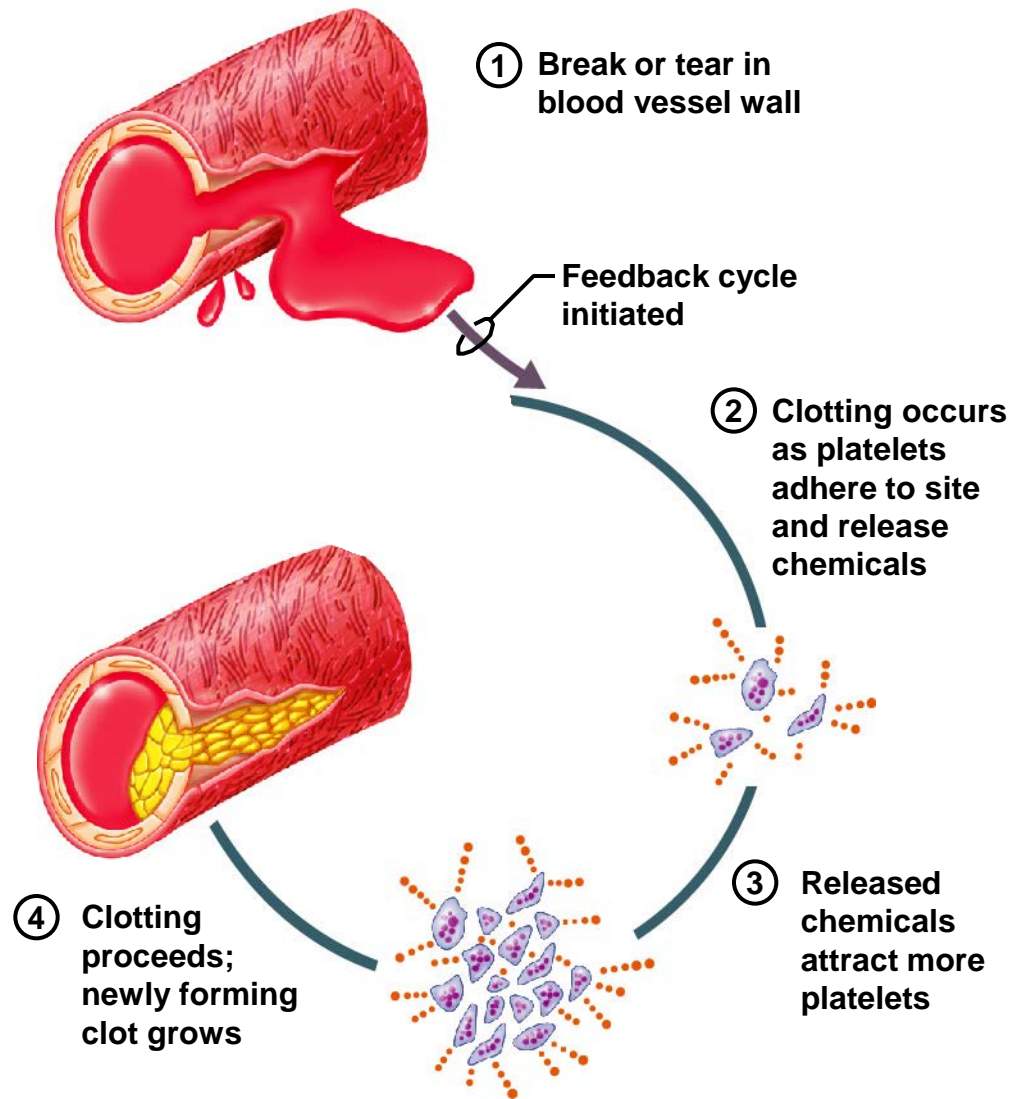


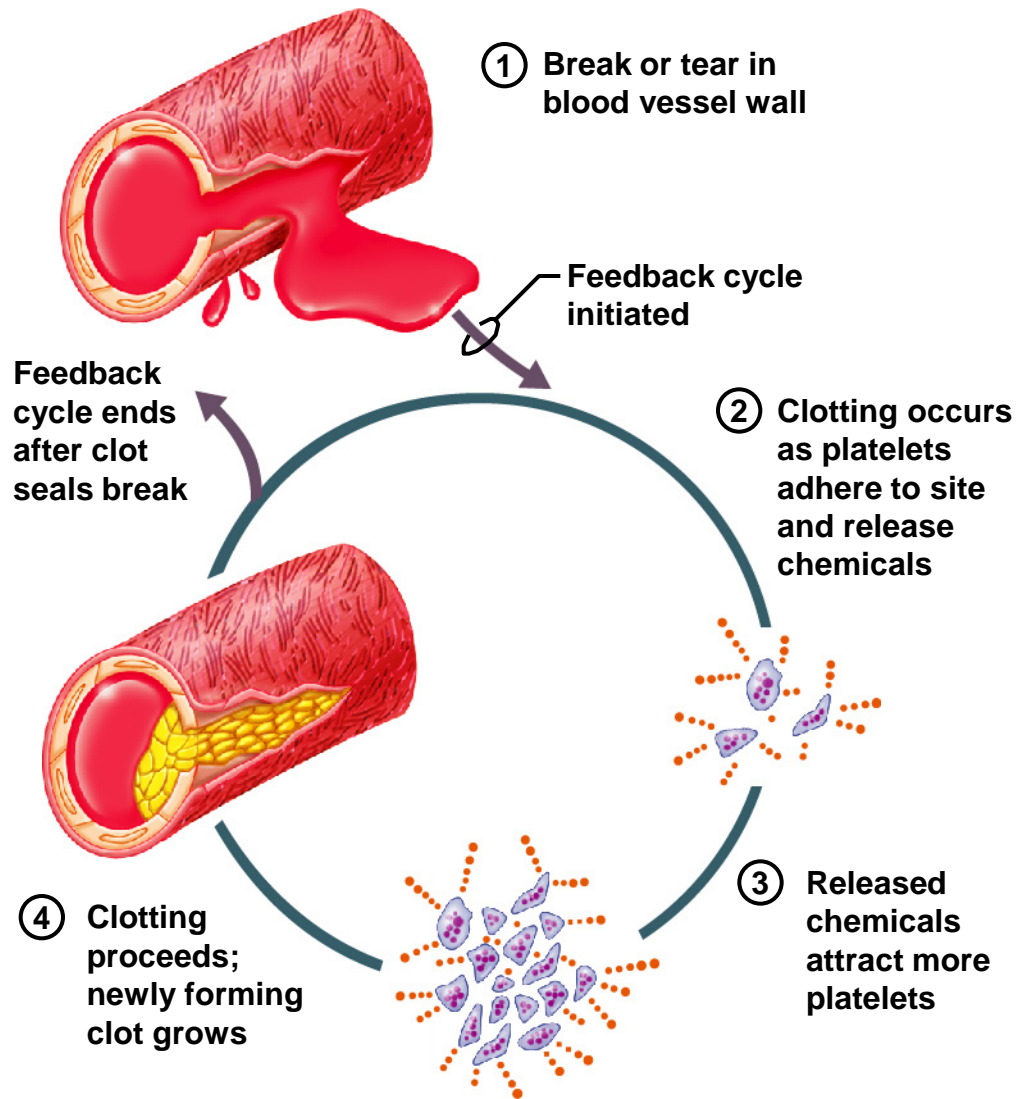












---

# Homeostatic Imbalance

- Disturbance of homeostasis or the body's normal equilibrium
- Overwhelming the usual negative feedback mechanisms allows destructive positive feedback mechanisms to take over