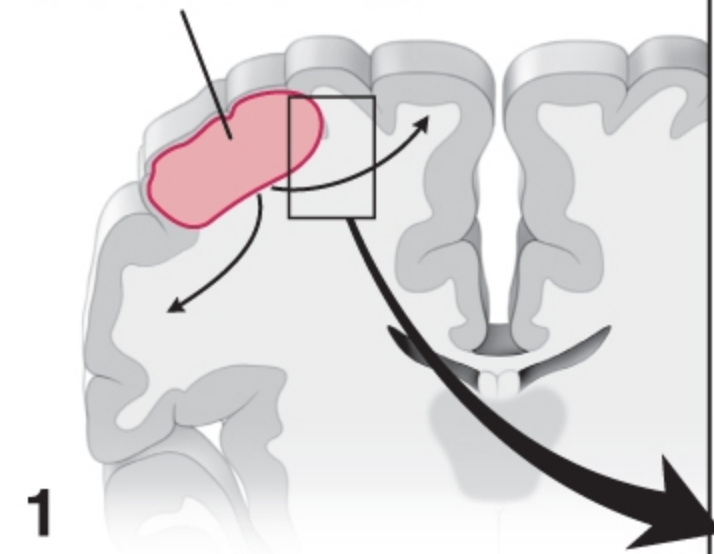


A

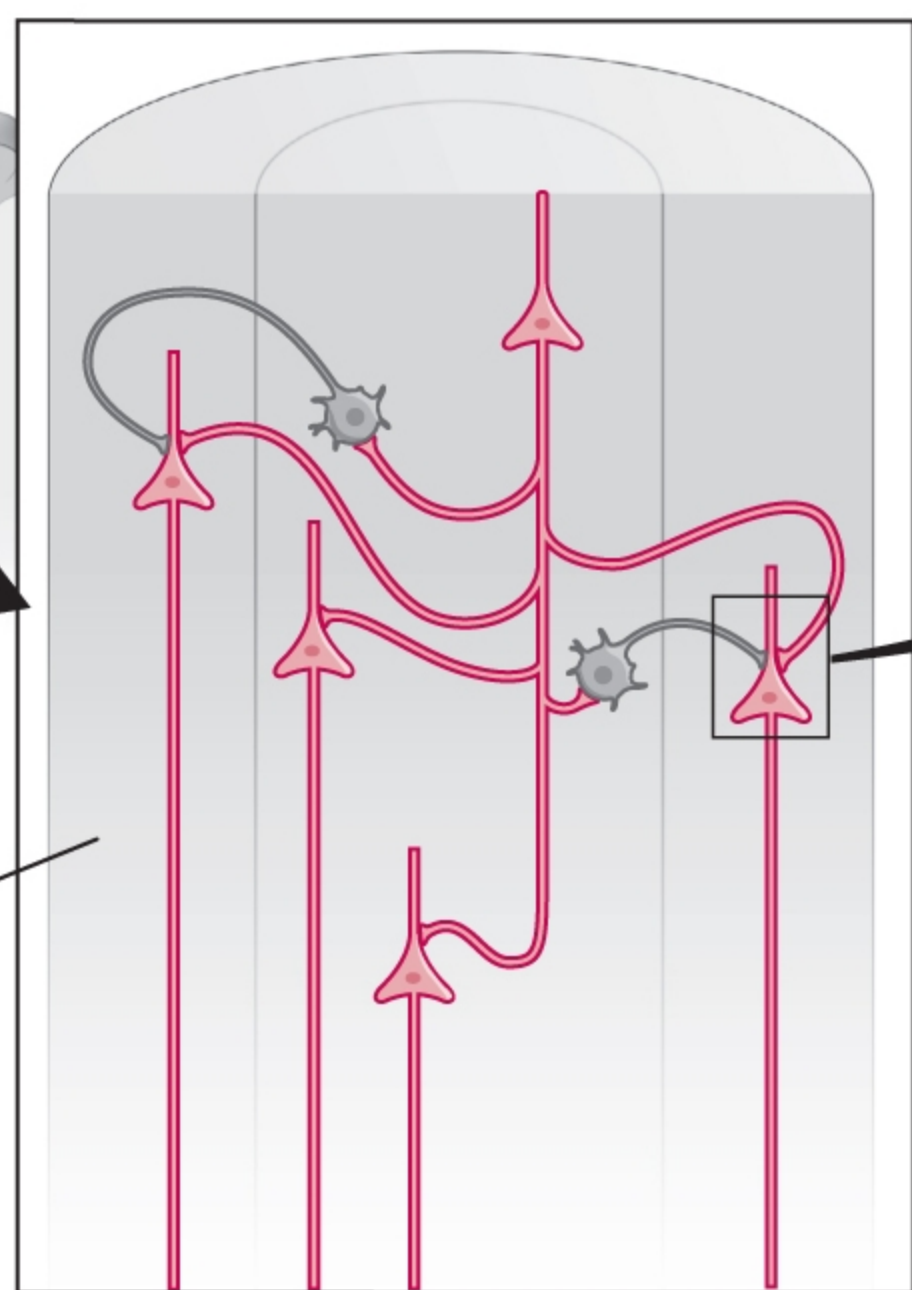
Seizure focus



1

Loss of inhibitory surround

2



Drug treatment

3

Felbamate
NMDA-R
(closed)

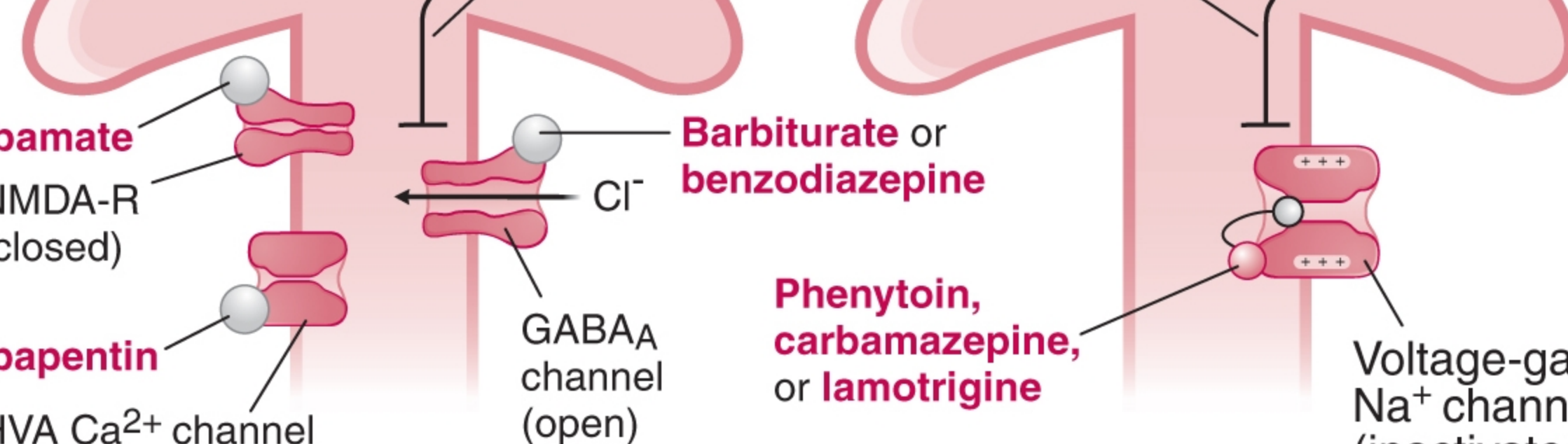
Gabapentin
HVA Ca²⁺ channel
(closed)

Action potentials
(transmission
inhibited)

**Barbiturate or
benzodiazepine**

**Phenytoin,
carbamazepine,
or lamotrigine**

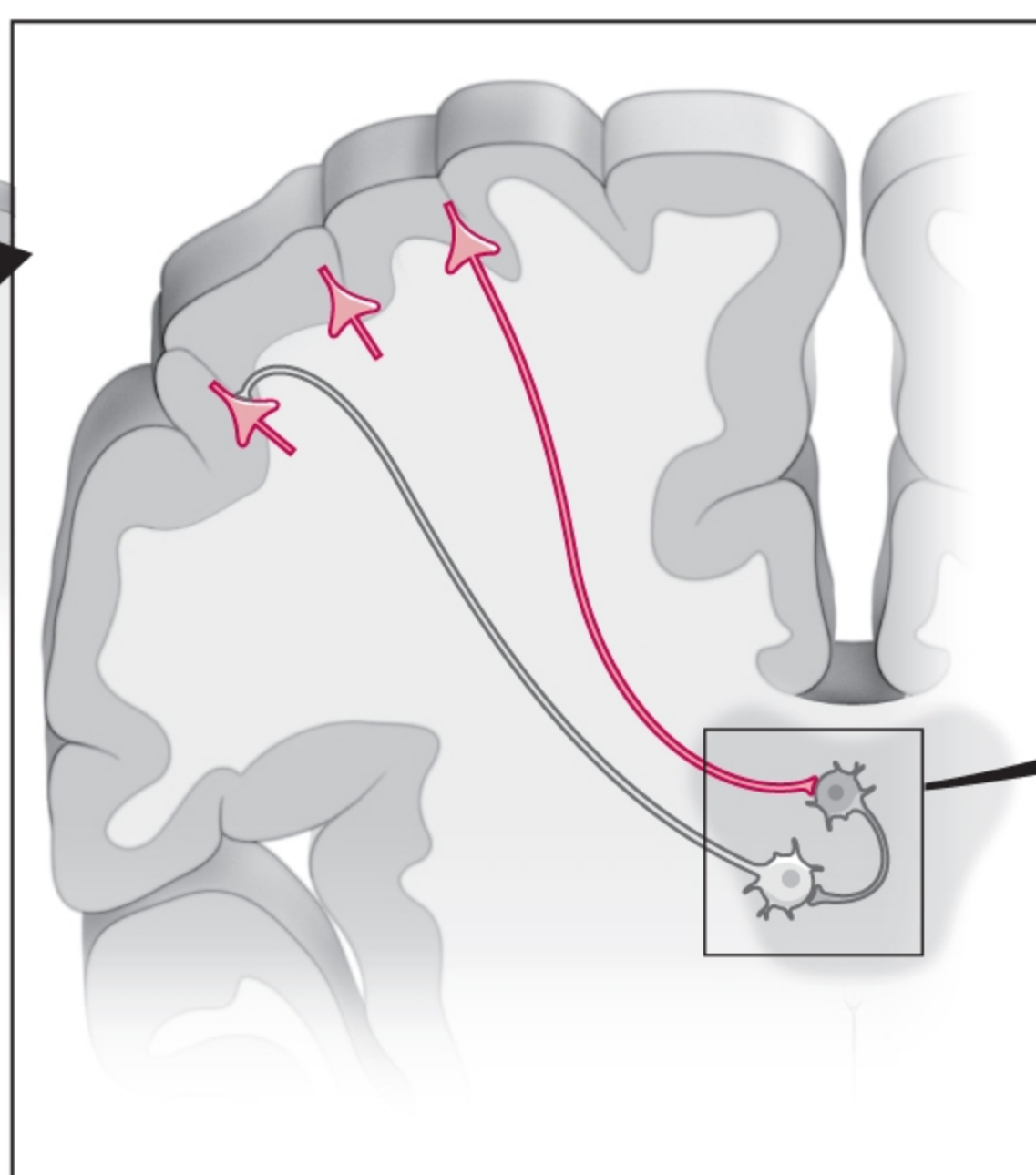
Voltage-gated
Na⁺ channel
(inactivated)

**B**

1

Thalamus
(seizure focus)

2



3

**Benzodiazepine
(clonazepam)**

Cl⁻

GABA_A channel
(open)

**Ethosuximide or
valproic acid**

T-type Ca²⁺
channel
(blocked)

