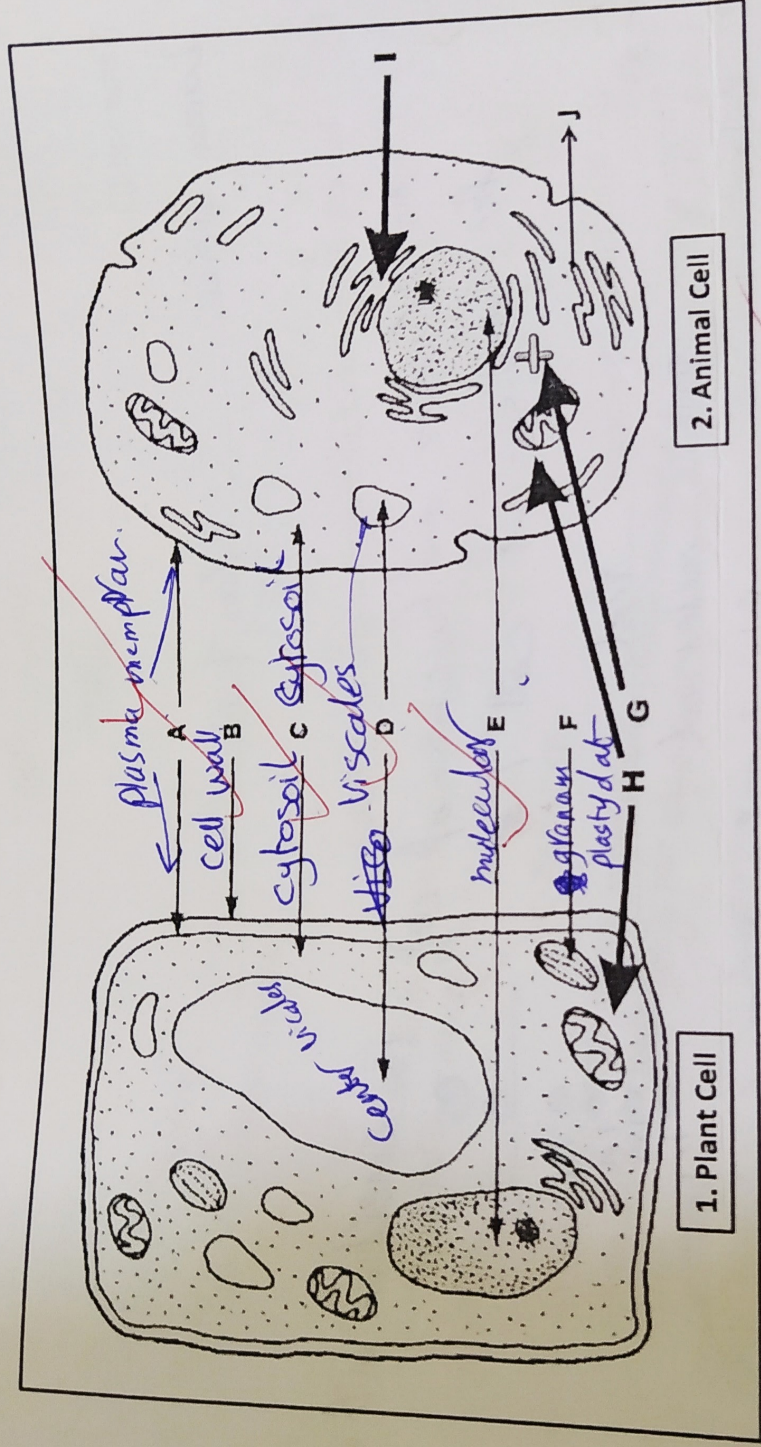


Label as much you can (at least 5) and state two main differences between animal and plant cells



Differences between plant cell and animal cell

- (1) ~~Cell wall~~
 - (2) ~~plastydab~~ ~~chloroplasts~~ ~~plastydab~~
- The ~~chloroplasts~~ ~~that make the chloroplasts~~

9/10

Quiz#5

Name and ID

[Redacted Name and ID]

is connection with of hand

1) The cell theory have four principles, give two principles:

1. the structure and function of cell
2. the division of cell

①
②
① in
① in
① in
① in

2) Eu- from Eukaryotic- means: real

Karyon means: genetic material of

3) Prokaryotic-- pro- means: before / what is before

4) Plasma membrane is composed of a phospholipid bilayer with proteins embedded through it and ~~not~~ attached to its surface.

A. True B. False

5) Cell wall is common with plant and bacterial cells

A. True B. False

6) The entire region between the nucleus and the plasma membrane is called ~~plastids~~

A. True B. False

7) Bacterial cells have peroxisome

A. True B. False

8) There are three types of plastids: (a) chromoplasts (b) chloroplasts and (c) leucoplasts

A. True B. False

Chloroplasts