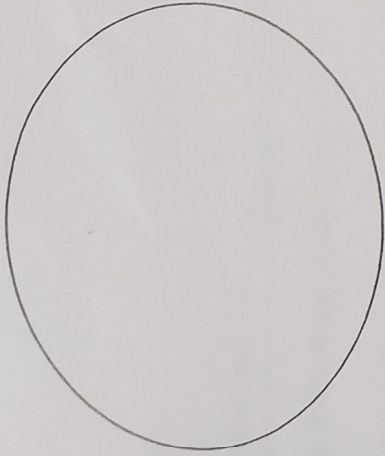
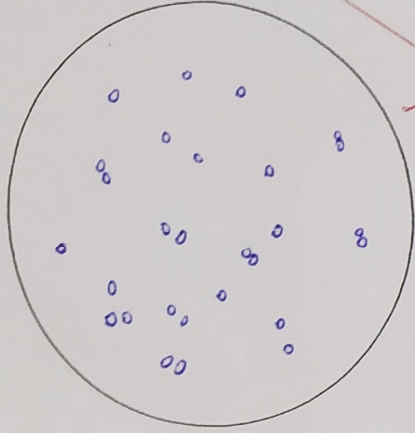


5. Animal cells

a) Draw what you observed with labeling indicating the magnification for the following:



Squamous Epithelial



Blood

b) Which of the following is not found in a plant cell?

- A. Cell wall
- B. Chloroplasts
- C. Mitochondria
- D. All of the above are found in a plant cell

Scientist Name and ID _____

Read and answer all of the following questions.

1. What is the objective of this experiment?

see the ~~see~~ animal cell and plant cell, and bacteria

2. CORK

a) What is the structure that is visible under the microscope? When Hooke described his observations of cork under the microscope he used the word "cell" for the first time. Explain what is a cell

the cork is dry die cell
the cells are structures and it has wall cell and plasma membrane

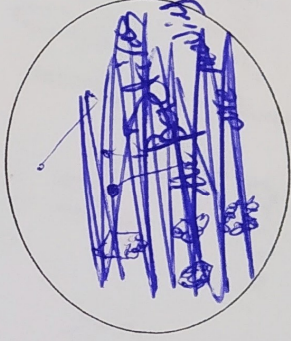
but I took it die cell so what I see is the cell wall just

b) Draw what you observed with labeling indicating the magnification.



3. *Lactobacillus*

a) Draw what you observed with labeling indicating the magnification.



I don't see it

Lactobacillus

b) Do these organisms have a nucleus?

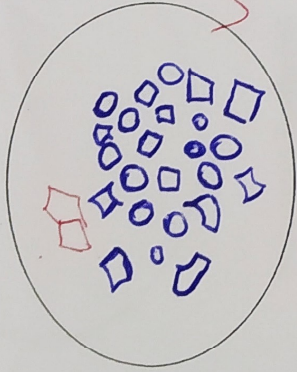
yes. X -0.5

c) What is the shape of these organisms?

-0.5

4. Plant cells

a) Draw what you observed with labeling indicating the magnification for the following.



Tomato cell

Potato cell

b) What are the differences you observed between these two cells?

The potato cell is to small and ~~adgesent~~ ^{adgesent} close to each other
The Tomato cell is order and Big its far from each other

c) Why do potato cells stain blue/black after addition of IKI?

because potato have starch and the starch being blue/black whe we add IKI | the starch is polysaccharide and IKI is the difined to the starch and polysaccharide