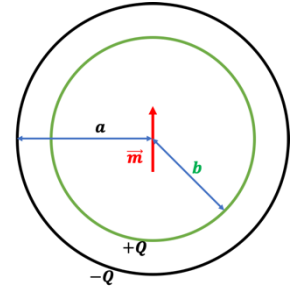


Phys332/Homework
Due on Monday 29/11/2021

Consider a magnetic dipole \vec{m} at the center of two concentric spherical metal shells of radii a and b . There is a total charge $+Q$ and $-Q$ on the inner sphere and outer sphere, respectively.

- The Poynting vector everywhere.
- The energy density associated with the electromagnetic field.
- The momentum density associated with electromagnetic field.
- The angular momentum density associated with the electromagnetic field.
- The total angular momentum associated with the electromagnetic field.



Additional recommended Problems (do not hand in your solution for them):

8.4

8.7

8.9

8.16

8.24