

FASHION



FASHION DETAILS &
ACCESSORIES
SKETCH BOOKLET

TABLE OF CONTENTS

FASHION DETAILS & ACCESSORIES

Belts.....	1-2
Blouses/Shirts.....	3-4
Blouse Back Variations.....	5
Coats.....	6
Collars.....	7-8
Design Detail.....	9-10
Dresses.....	11-12
Hats.....	13-14
Jackets.....	15-16
Jewelry.....	17-19
Necklines.....	20
Pants/Shorts/Jumpsuits.....	21-23
Purses/Handbags.....	24
Scarves.....	25
Shoes/Boots.....	26-28
Skirts.....	29-31
Sleeves.....	32-33
Socks.....	34
Sweaters.....	35
Vests.....	36-37



Sketches provided by Judith Rasband
Organization by Margie Dobson and Becky Parkinson

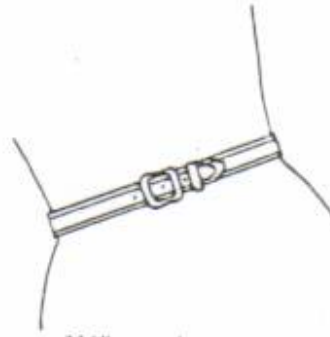
BELTS



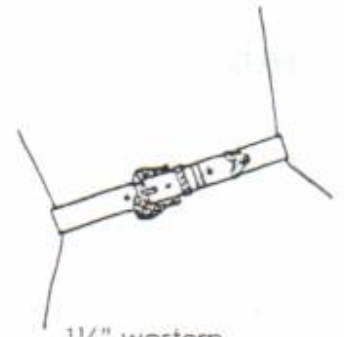
1/2" narrow classic buckled



1" classic buckled



1 1/4" sport



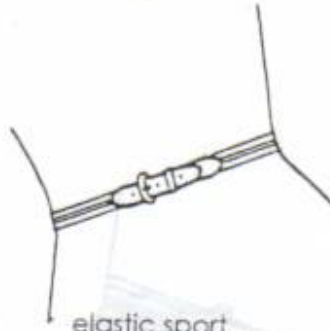
1 1/4" western



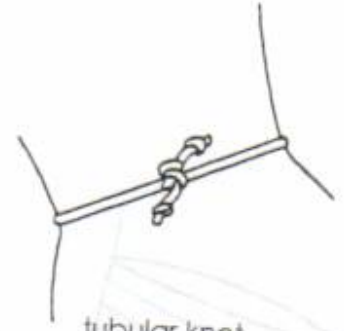
woven belt



braided belt



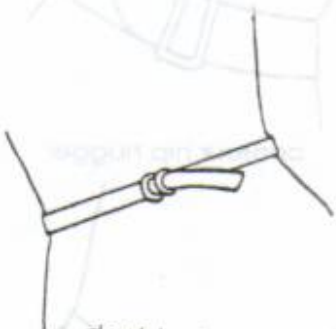
elastic sport



tubular knot



self fabric tie



double ring



rope/cord



narrow metal expansion



chain



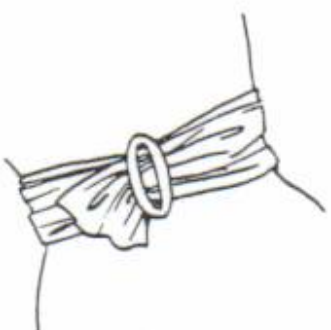
medium width basic



medium leather sash



Navajo/Indian belt



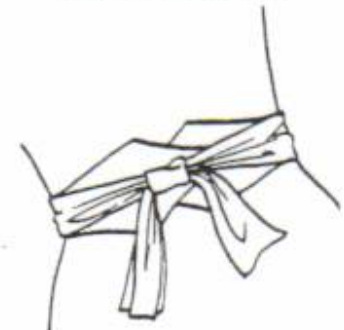
crushed wide belt



wide fabric sash



Obi Wrap

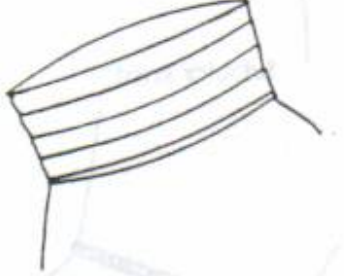


Obi square knot

BELTS



fashion variation



cummerbund



cinch



contour hip hugger



asymmetrical novelty buckle



Grecian rope



variation



two thin loose belts



twisted fabric



belt with large bow



belt with large bow



belt with large bow

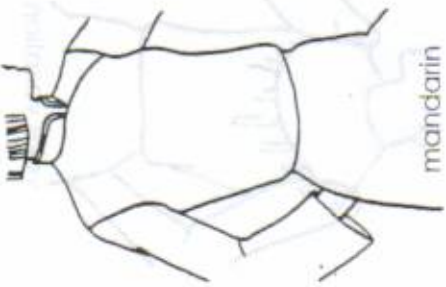


belt with large bow

BLOUSES/SHIRTS



tank



mandarin



fitted



western



surplice



princess w/peplum



wrap



jewel-shell



camisole



scoop-shell



v-shell



camp shirt



peasant



blouse



sport shirt



bib front



square

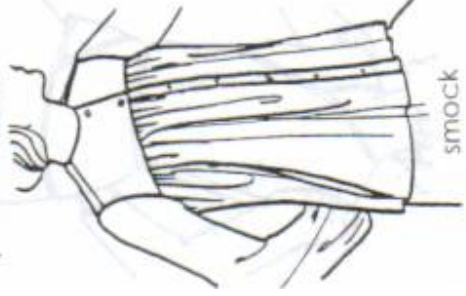


yoke-front

BLOUSES/SHIRT



painters smock



smock



yoke variation



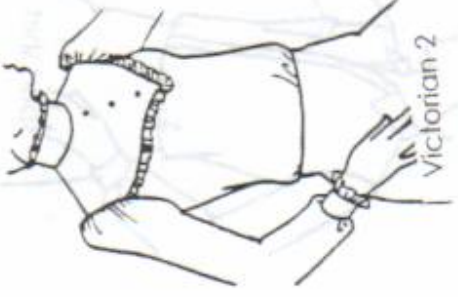
bowed



Elizabethan



yoke variation



victorian 2



tunic



yoke variation



ruffle neck



yoke variation



kimono variation



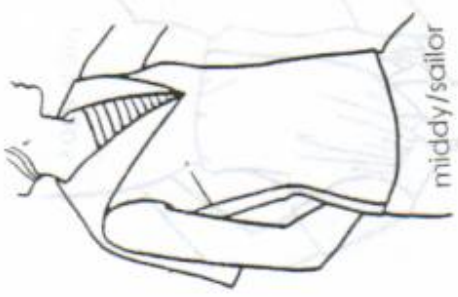
prairie



yoke variation



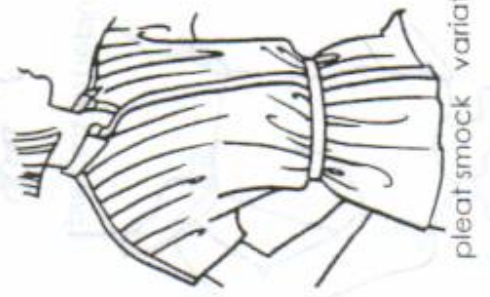
asymmetrical capelet



middy/sailor



yoke variation

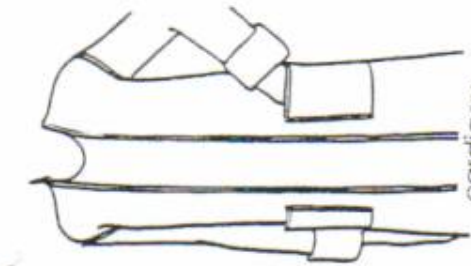


pleat smock variation

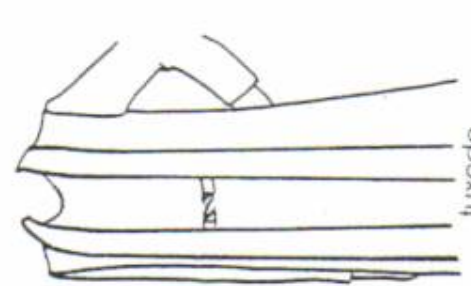
BLOUSE/SHIRT BACK VARIATIONS



COATS



cardigan



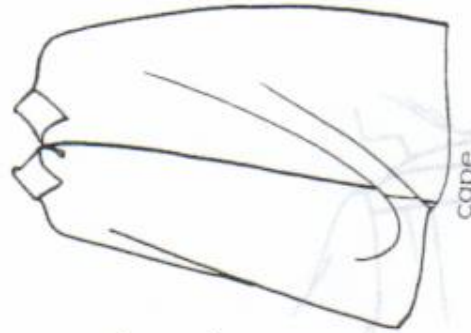
luxedo



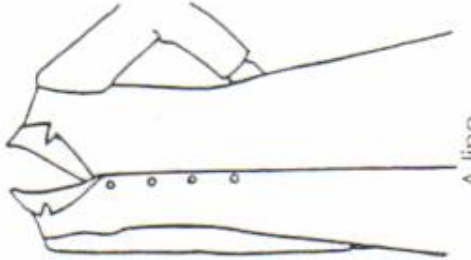
swagger



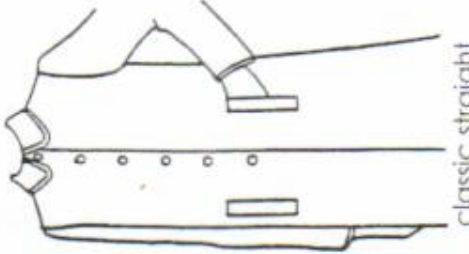
wrap



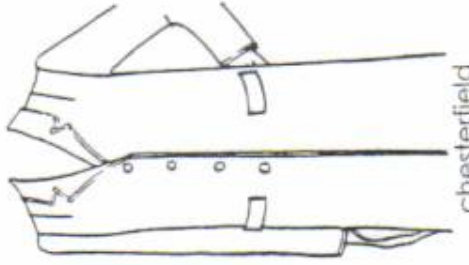
cape



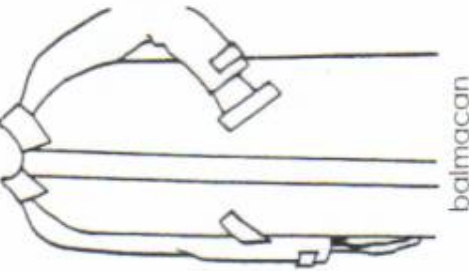
A-line



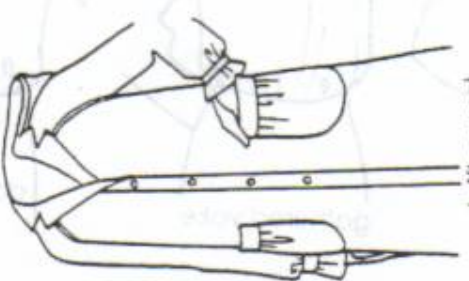
classic straight



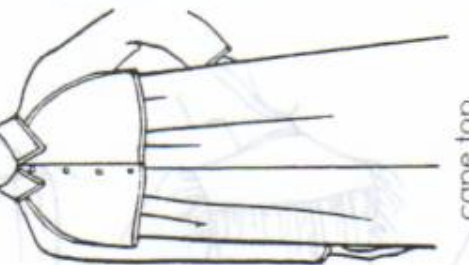
chesterfield



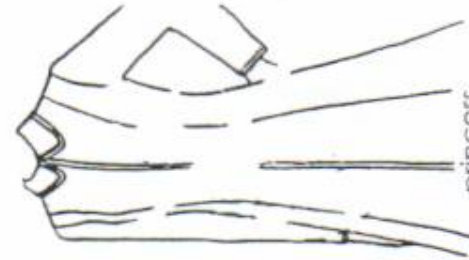
balmacan



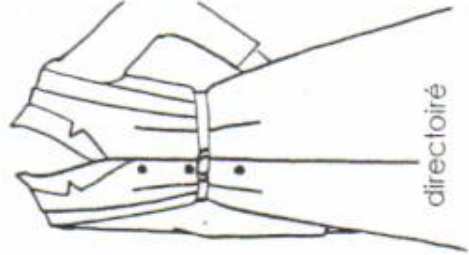
duffle sport



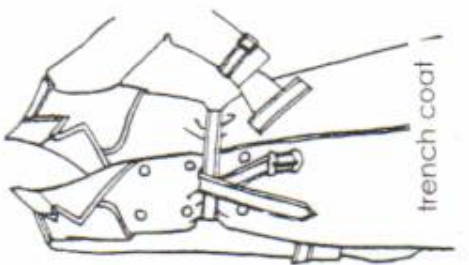
cape top



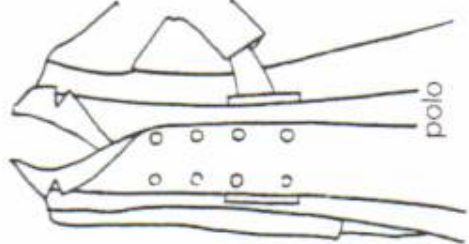
princess



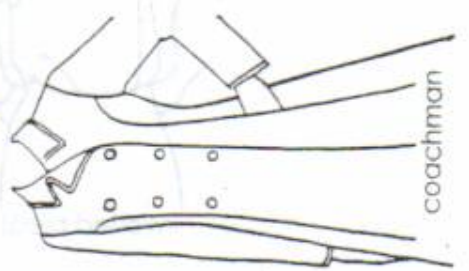
directoire



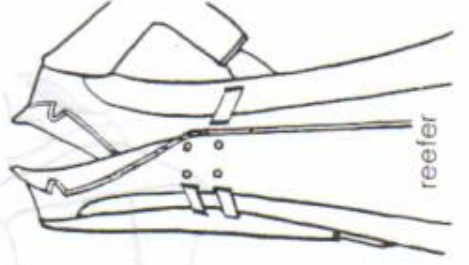
french coat



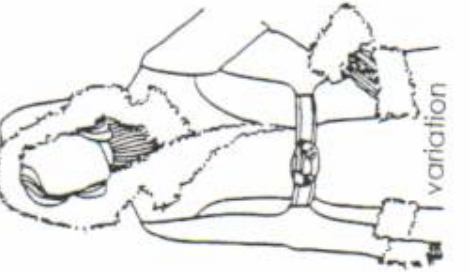
polo



coachman



reefer



variation

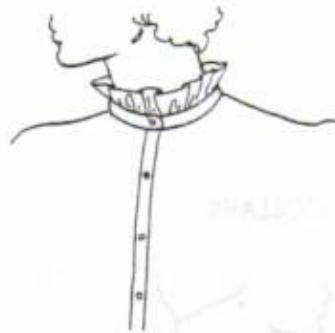
COLLARS



mandarin/Nehru



ruff



banded ruff



ruffles



ascot



jabot



bow



bowed shawl



portrait



turtle



wide cowl



bateau roll



cowl



peter pan



platter



Oliver/puritan



pointed collar with stand



notched



shawl



Italian roll



COLLARS



reverse

Chelsea



middy sailor

tuxedo



DESIGN DETAIL



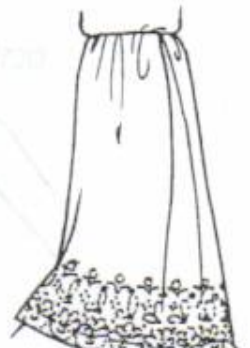
waist border print



hip border print



hip border print



hem border print



small vertical stripe



small horizontal stripe



narrow vertical stripe



narrow horizontal stripe



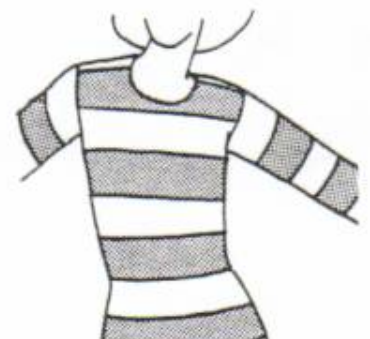
medium horizontal stripe



medium vertical stripe



wide vertical stripe



wide horizontal stripe



small plaid



medium plaid



large plaid



small print



medium print



large print

DESIGN DETAIL



A-line piping

yoke piping

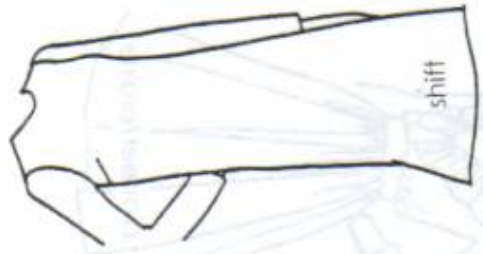
jacket trim



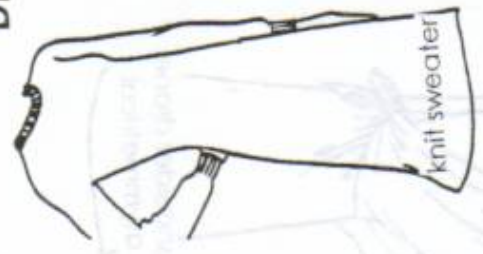
DRESSES



sheath



shift



knit sweater



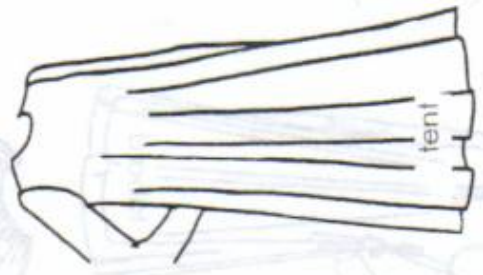
A-line



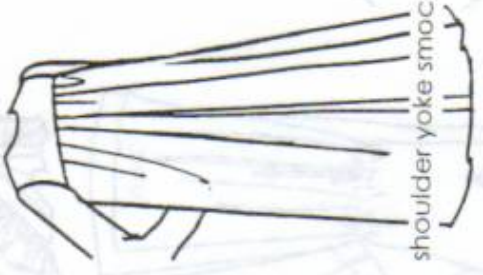
princess line



flare



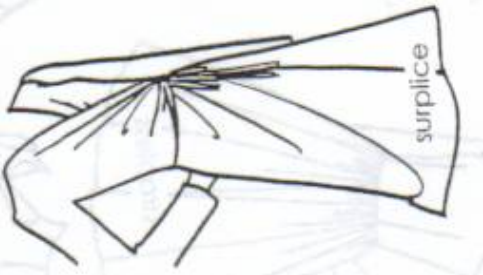
tent



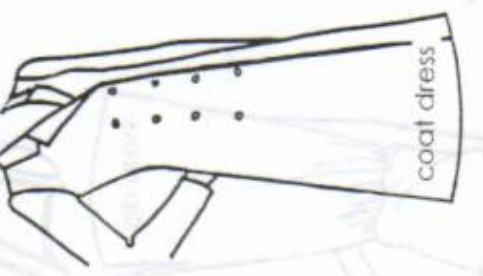
shoulder yoke smock



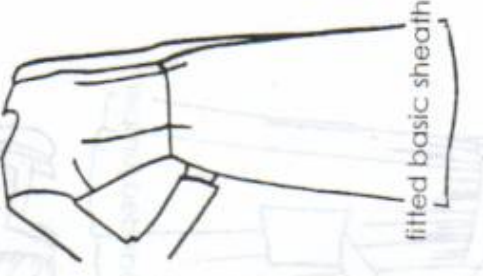
caftan



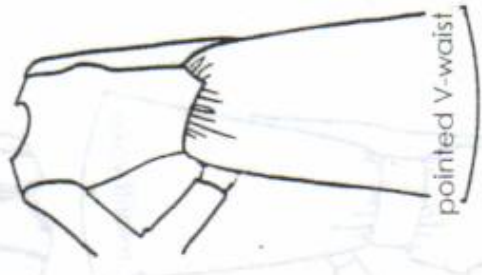
surplice



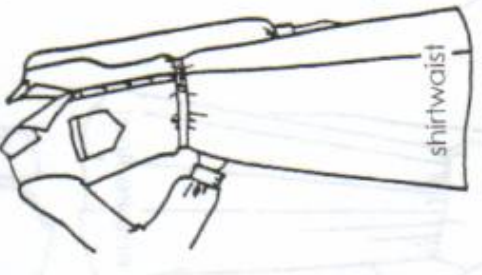
coat dress



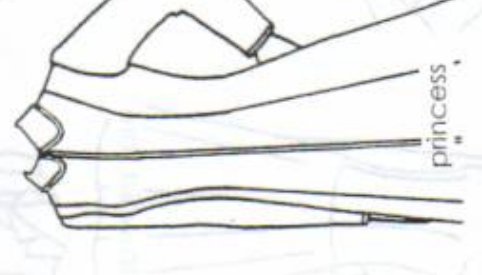
fitted basic sheath



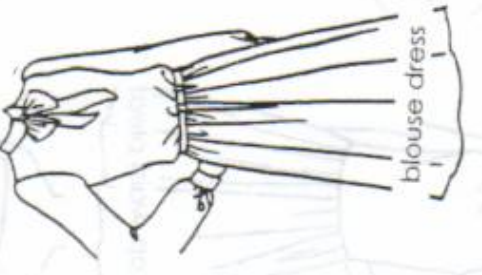
pointed V-waist



shirtwaist



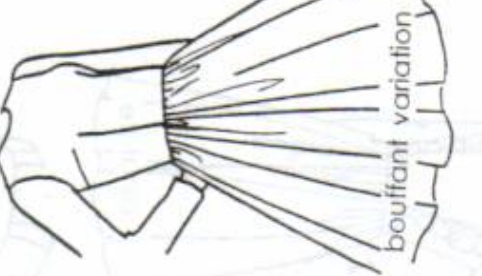
princess



blouse dress



blouse dress

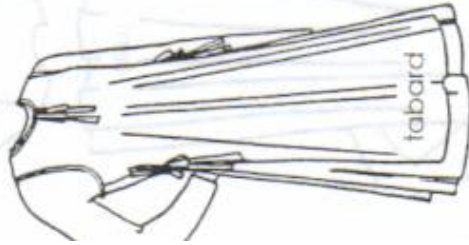


bouffant variation

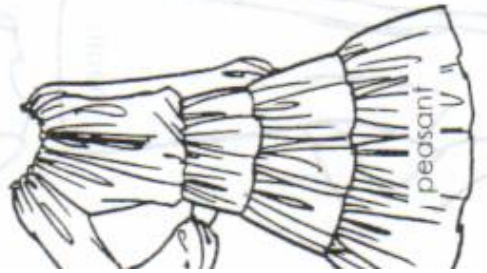
DRESSES



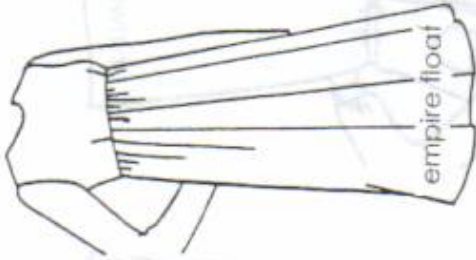
midriff yoke



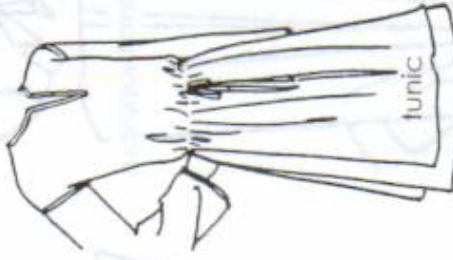
tabard



peasant



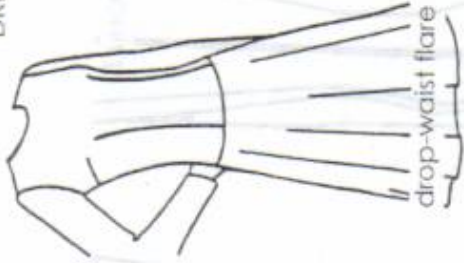
empire float



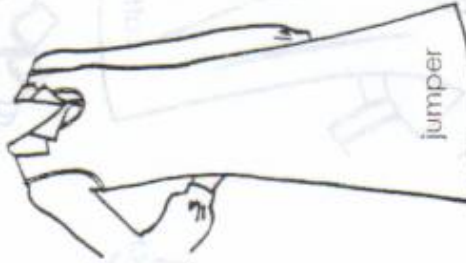
tunic



pioneer/prairie



drop-waist flare



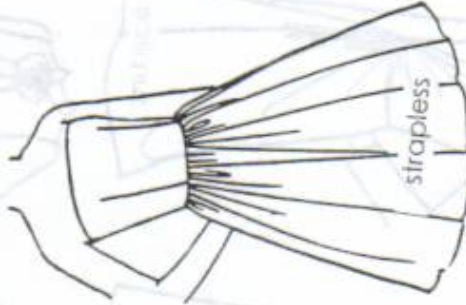
jumper



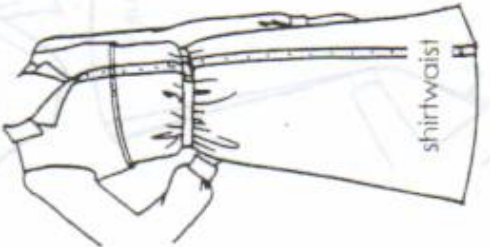
shoulder drape
asymmetrical



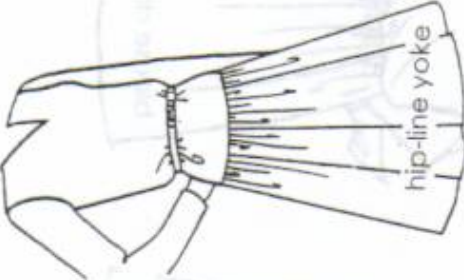
drop-waist pleat



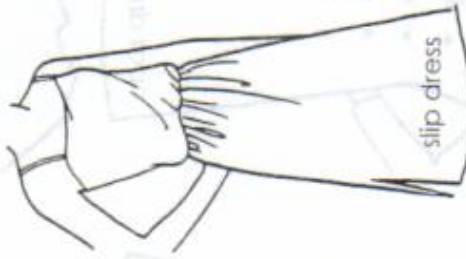
strapless



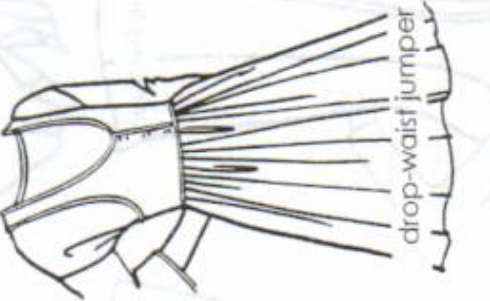
shirtwaist



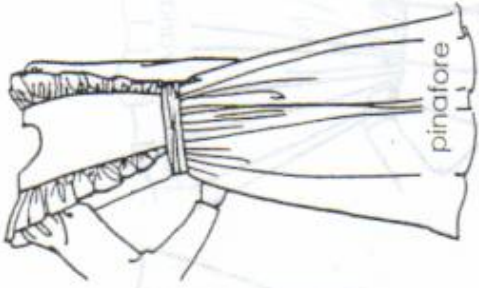
hip-line yoke



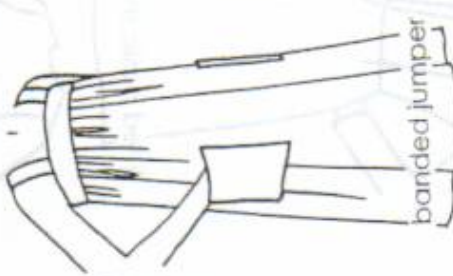
slip dress



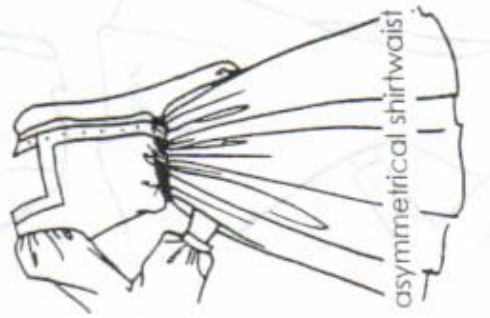
drop-waist jumper



pinafore



banded jumper



asymmetrical shirtwaist

HATS



Juliette cap



knit helmet



cuffed ski



rolled ski



bonnet



beret



turban



toque



pill box



military (army)



fez



cloche



coolie



jockey



crew



fur-trimmed crew



small-brim



medium-brim



slouch



fedora

HATS



top hat



flat top



flat top



flat top



derby



Breton



sailor



picture



cartwheel



visor



bandanna visor



hood



flat top



flat top



flat top



flat top



flat top



flat top

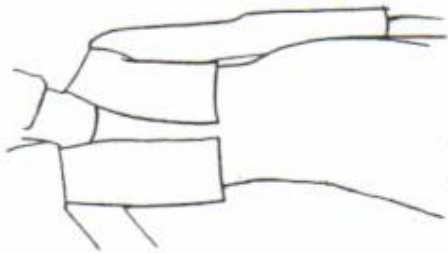


flat top

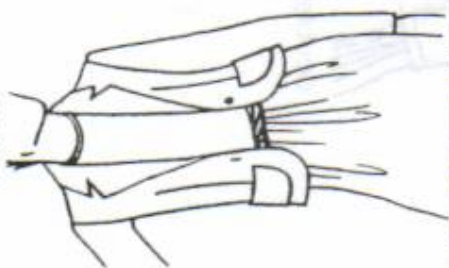


flat top

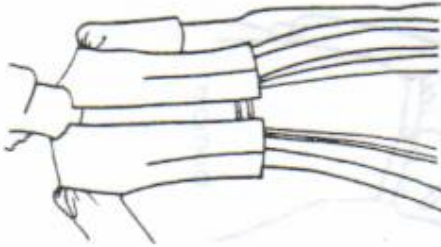
JACKETS



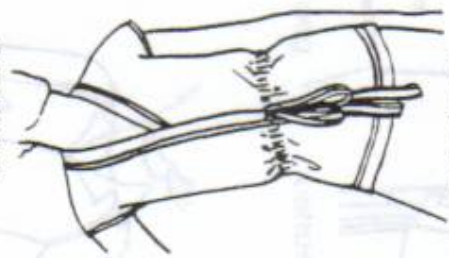
bolero



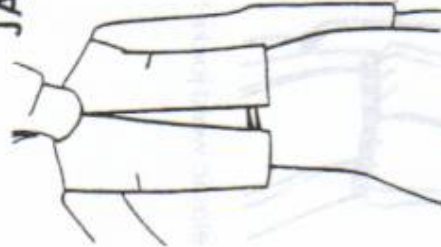
high-hip fitted blazer



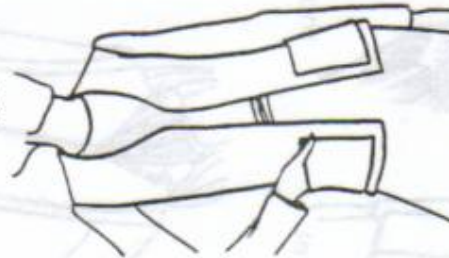
dressmaker



cap sleeve



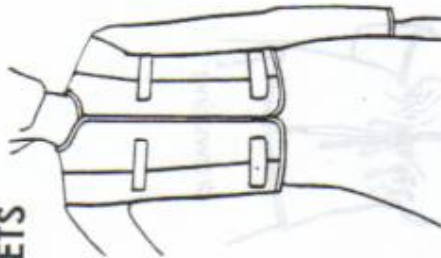
box



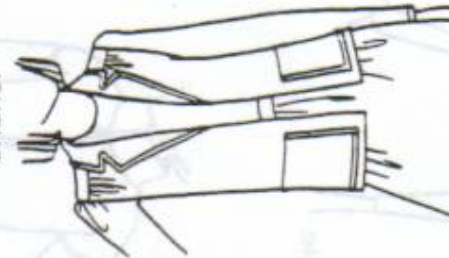
cardigan



fitted blazer



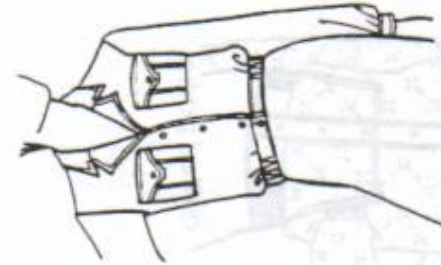
Chanel



loose unlined A-line



variation



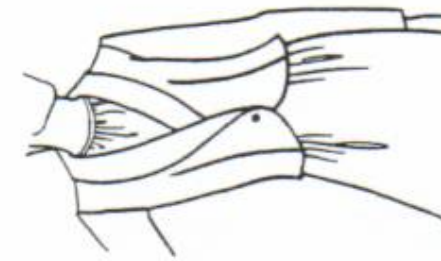
aviation/bomber



wrap



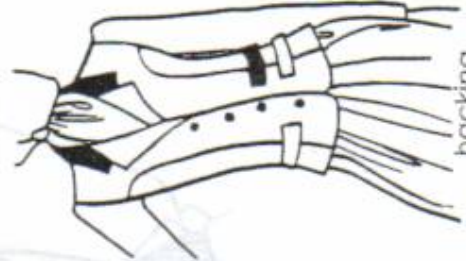
princess-line blazer



short blazer

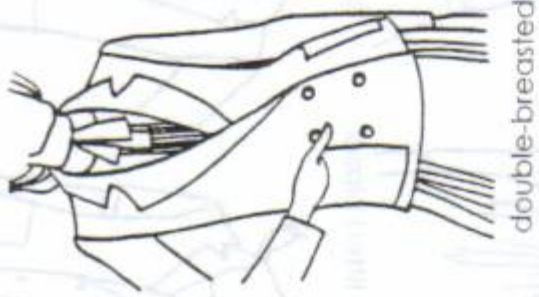


safari

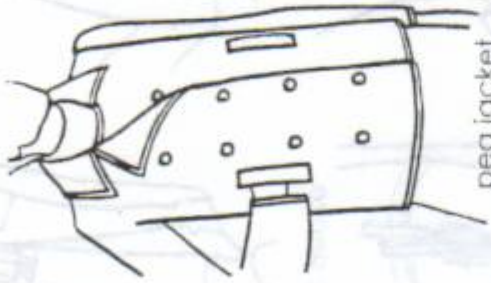


hacking

JACKETS



double-breasted



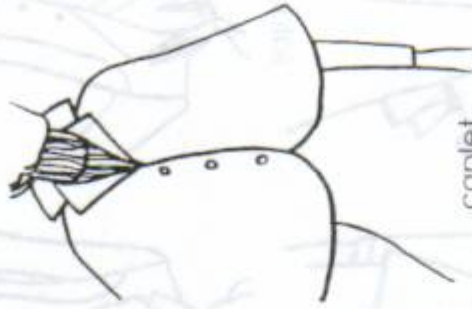
pea jacket



shawl stole



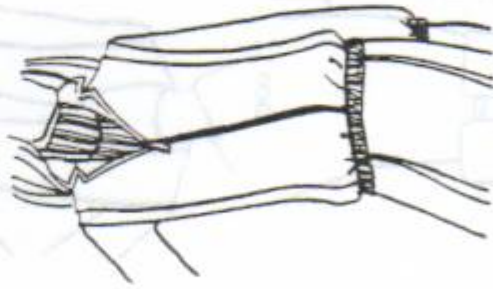
poncho



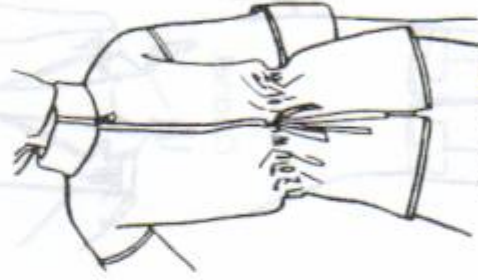
caplet



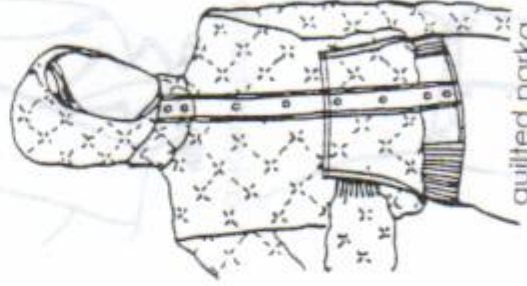
bomber



elastic waist jacket



drawstring



quilted parka

JEWELRY



narrow choker



medium choker



heavy choker



asymmetrical variation



necklace lengths



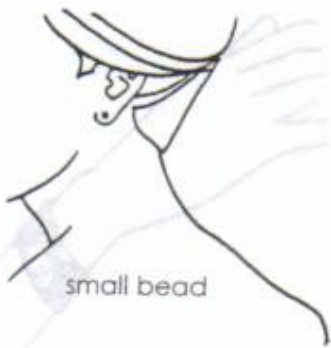
shell & wood costume



jewel costume



pendant



small bead



medium bead



large bead



small loop



medium loop



large loop



costume loop (large)



medium drop



small drop



large drop



short dangle jewel



medium dangle jewel



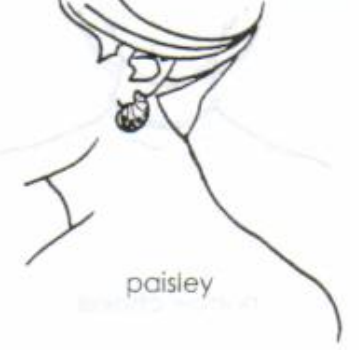
long dangle jewel



shape shell



knot



paisley



oval



dainty dangle multiple-chain



dainty dangle single-chain



large narrow loop



metallic chain



pearl



medium flat chain



metallic expansion



ivory & silver wide



wide metallic



spiral



charm



medium band

NECKLINES

JEWELRY



dome variation

flat variation

large ornate

pearl basic



NECKLINES



strapless



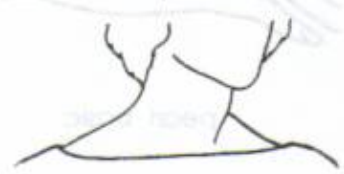
asymmetrical
one-shoulder



jewel



crew



bateau/boat/Sabrina



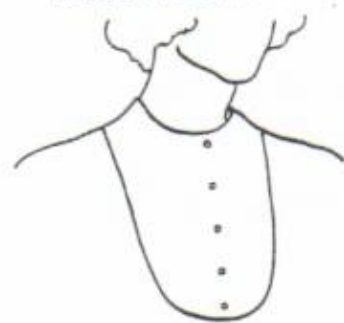
wide scoop



low wide scoop



U scoop



bib



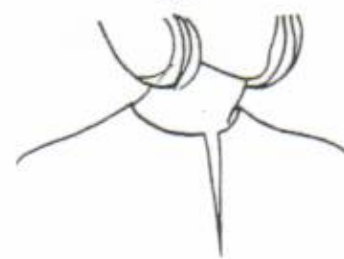
square



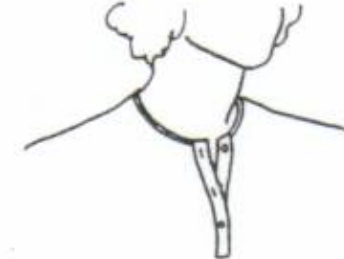
v-neck



décolleté



slit



henley



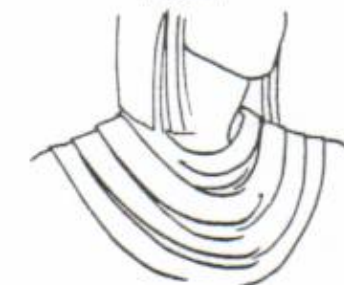
cardigan



sweetheart



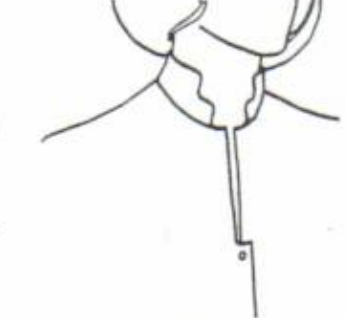
keyhole



wide draped



halter variation



split variation

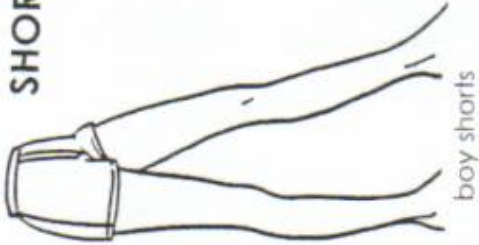
SHORTS



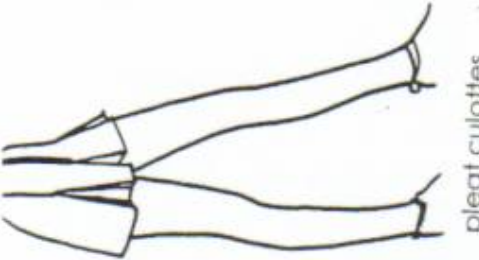
bikini



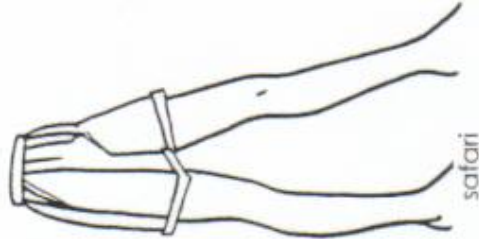
hot



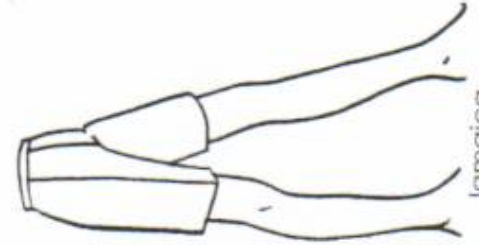
boy shorts



pleat culottes



safari

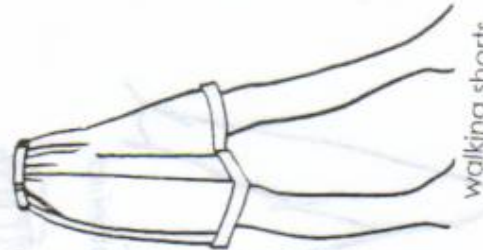


Jamaica

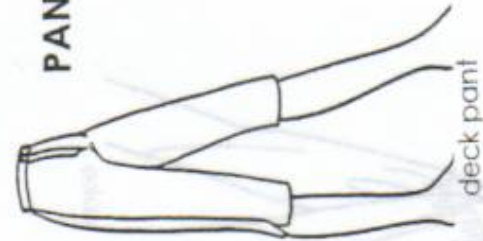
PANTS



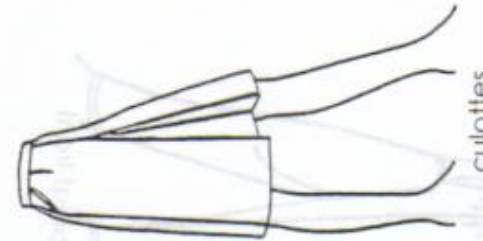
Bermuda



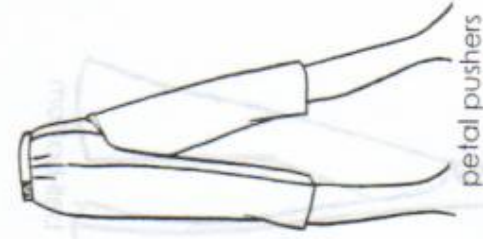
walking shorts



deck pants



culottes



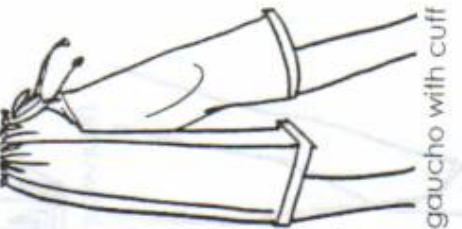
petal pushers



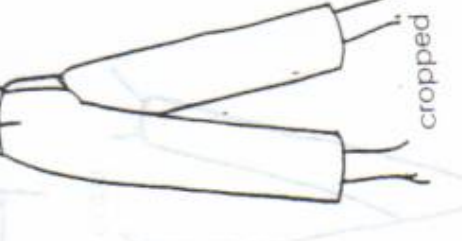
knickers



gaucho



gaucho with cuff



cropped



no waistband



hip hugger



elasticized

PANTS



jogging



drawstring



capri



pegged



stirrup



straight leg



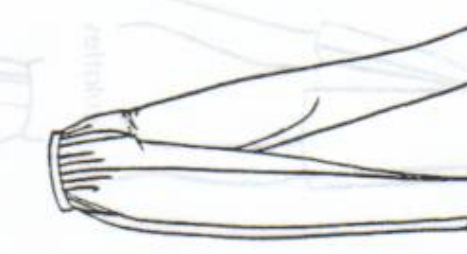
jeans



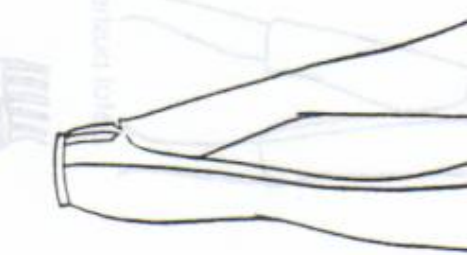
gathered



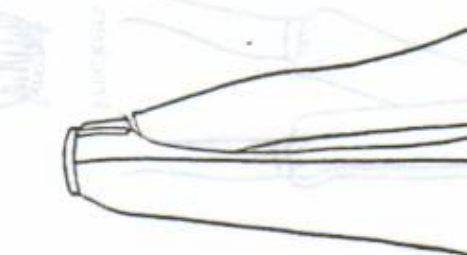
yoke



pleat-front



bell-bottom



flared



harem



palazzo



front view of a simple rectangular handbag.



front view of a handbag with a gathered top edge.



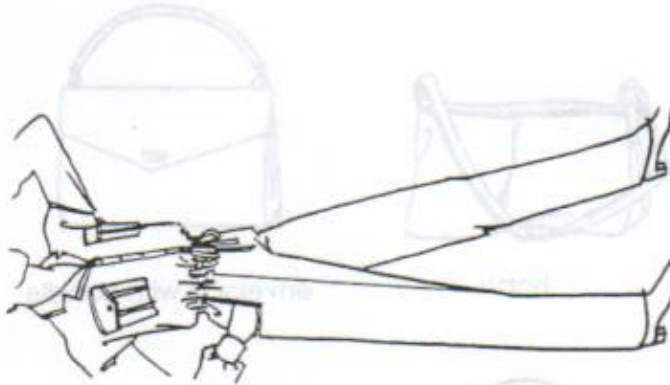
front view of a handbag with a horizontal seam across the middle.



front view of a handbag with a curved top edge.



front view of a handbag with a top handle and a shoulder strap.



jumpsuit



front view of a handbag with a gathered top edge and a shoulder strap.



front view of a handbag with a top handle and a shoulder strap.



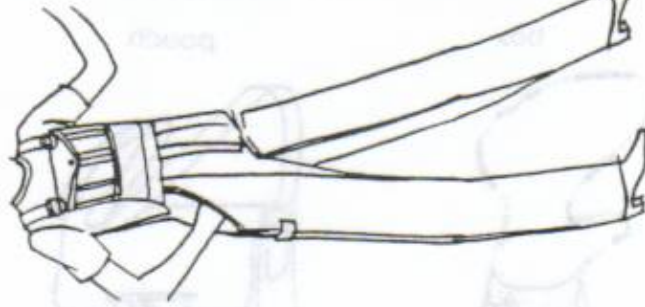
front view of a handbag with a gathered top edge.



front view of a handbag with a top handle and a shoulder strap.



front view of a handbag with a top handle and a shoulder strap.



overalls



JUMPSUITS



front view of a handbag with a top handle and a shoulder strap.



front view of a handbag with a top handle and a shoulder strap.



front view of a handbag with a top handle and a shoulder strap.



front view of a handbag with a top handle and a shoulder strap.

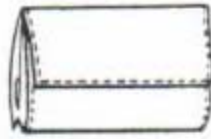


front view of a handbag with a top handle and a shoulder strap.

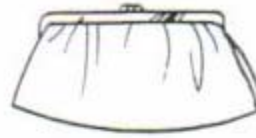
PURSES/HANDBAGS



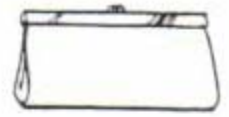
small envelope clutch



medium envelop clutch



frame clutch variation



frame clutch variation



pouch clutch



hobo



envelope with handle



satchel



swagger



box



pouch



tote bag



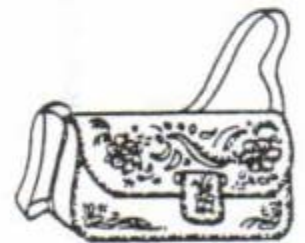
safari/caravan



baguette



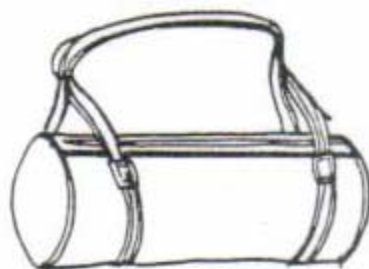
large shoulder strap



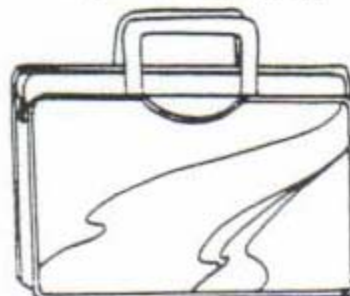
hand-tooled leather



small bag/shoulder strap



barrel



brief case/attaché

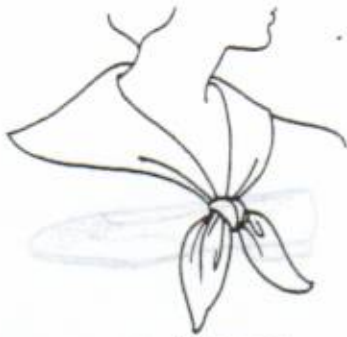


straw

SCARVES



sporty high-tie



girl scout



side-tie western



side-tie/shoulder drape



back-tie/bandit



ascot



looped jabot



medium-low knot



low-knot



side-wrap tie



stock tie



double-wrap jabot



hacking



man tied



man tailored tie



double-wrap 1/2 bow



soft bow



loose low bow



knotted twist



twisted

SHOES/BOOTS

SCARVES



ballerina flat



basic slip-on flat/skimmer



wing-tip



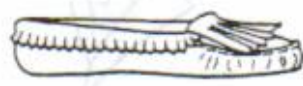
bowed tuxedo



narrow wedge



Mary Jane



moccasin



top-sider



loafer



tassel loafer



buckle loafer



wedgie



canvas espadrille



clog



blucher oxford



saddle oxford



wing-tip oxford



balmoral

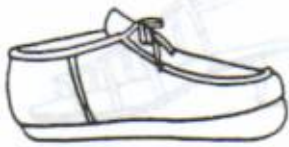


jogging shoe



tennis shoe

SHOES/BOOTS



earth shoes



classic pump



spectator



platform pump



spectator sport



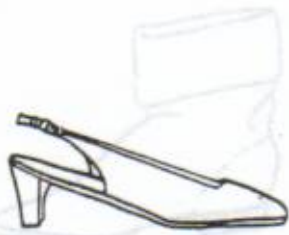
business walker



moccasin sport



oxford walker



sling-back pump



Chanel sling



open-toed pump



open-toed d'Orsay



open-toed sling



instep strap/
Mary Jane pump



high-ankle strap



low-ankle wrap



T-strap



thong



flat sandal



strappy flat

SHOES/BOOTS



huarache



low-wedge sandal



wedge sandal



city sandal



platform sandal



loafer sandal



mule



stacked heel sandal



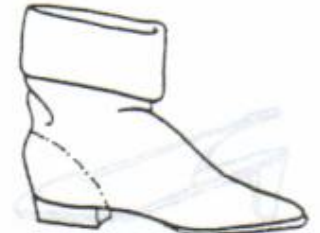
mid-high dress sandal



high heel summer shell



dressy evening sandal



jodhpur



high-top walking



high-top sport



high-top dress



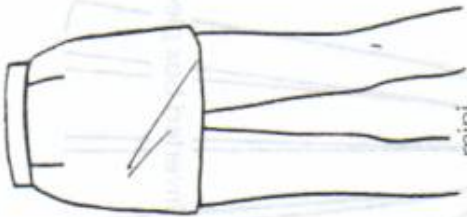
western



hiking



SKIRTS



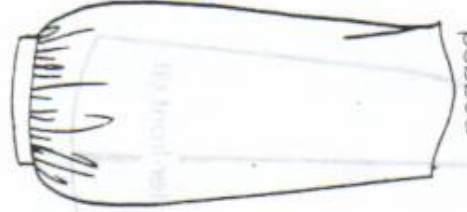
mini



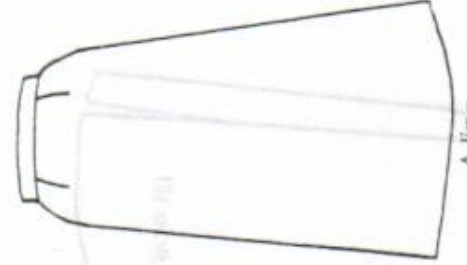
straight sheath



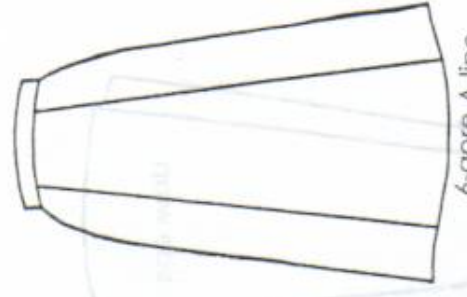
straight trouser



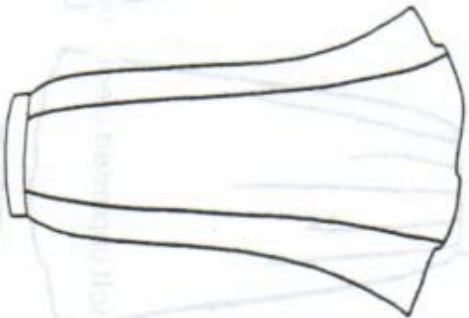
pegged



A-line



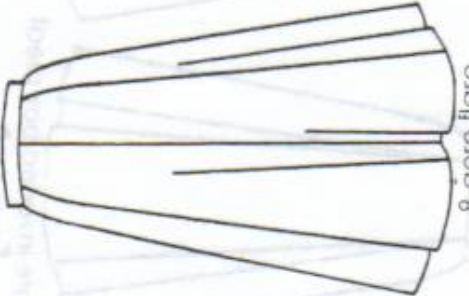
6-gore A-line



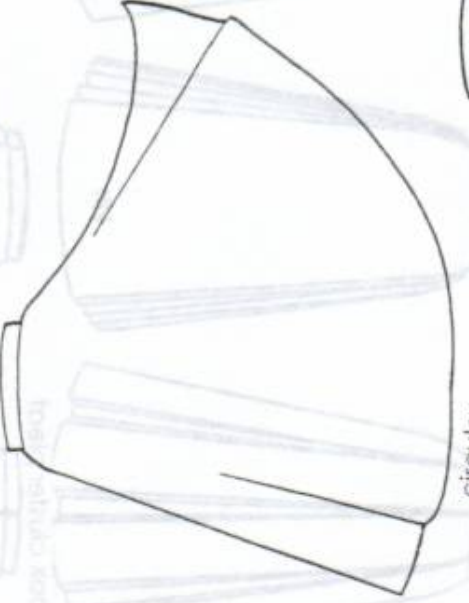
6-gore trumpet



4-gore flare



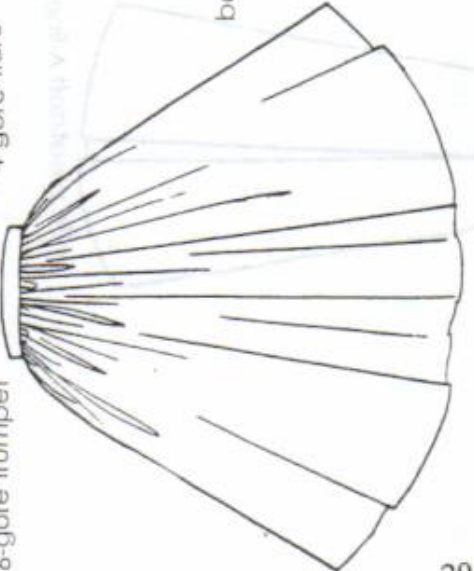
8-gore flare



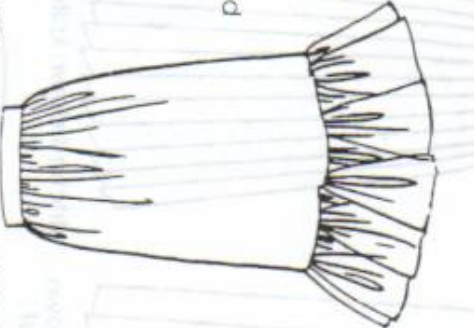
circular



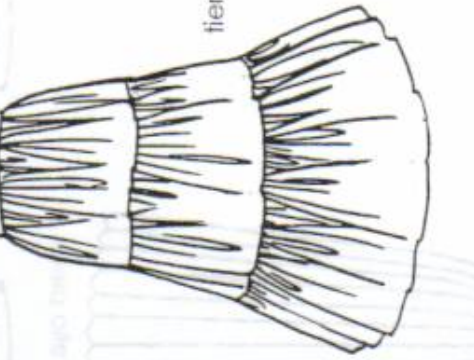
dirndl



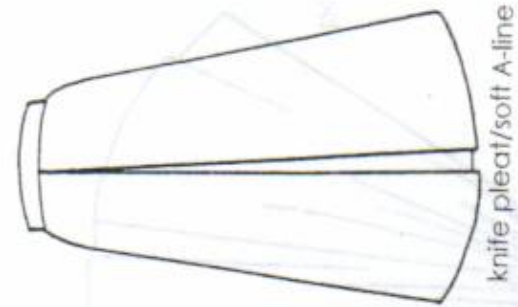
bouffant



prairie



tiered



knife pleat/soft A-line



soft unpressed pleat



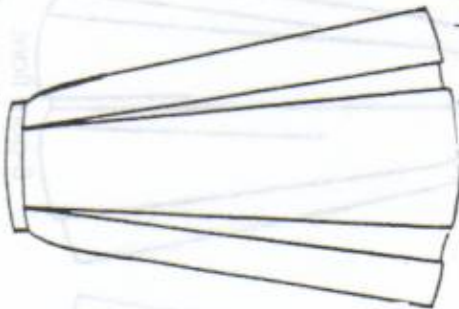
unpressed center pleat



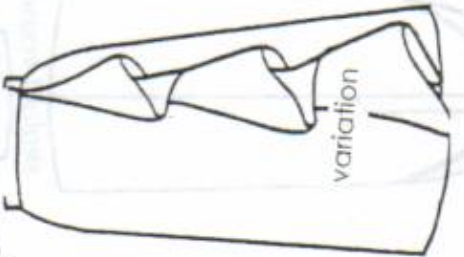
6-gore inverted box pleat



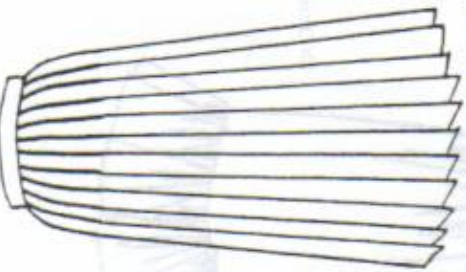
stitched-down front pleat



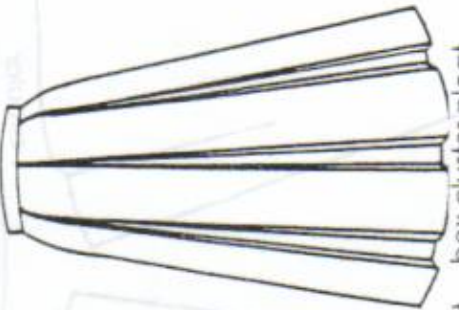
4-gore inverted box pleat



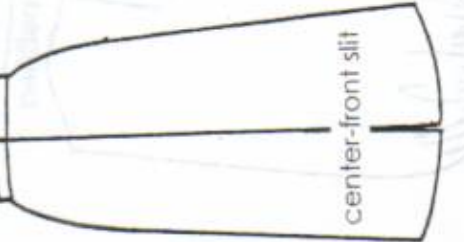
variation



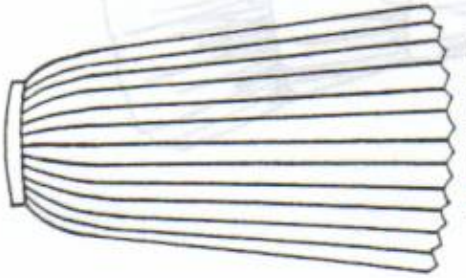
stitched-down knife pleat



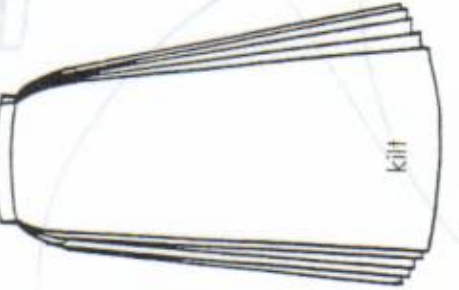
box cluster pleat



center-front slit



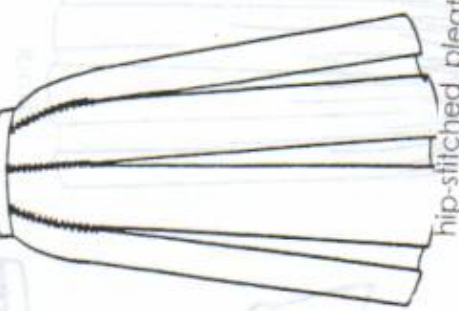
umbrella pleat



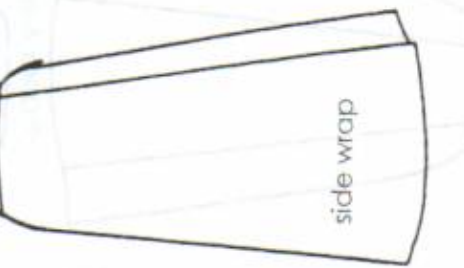
kilt



side slit

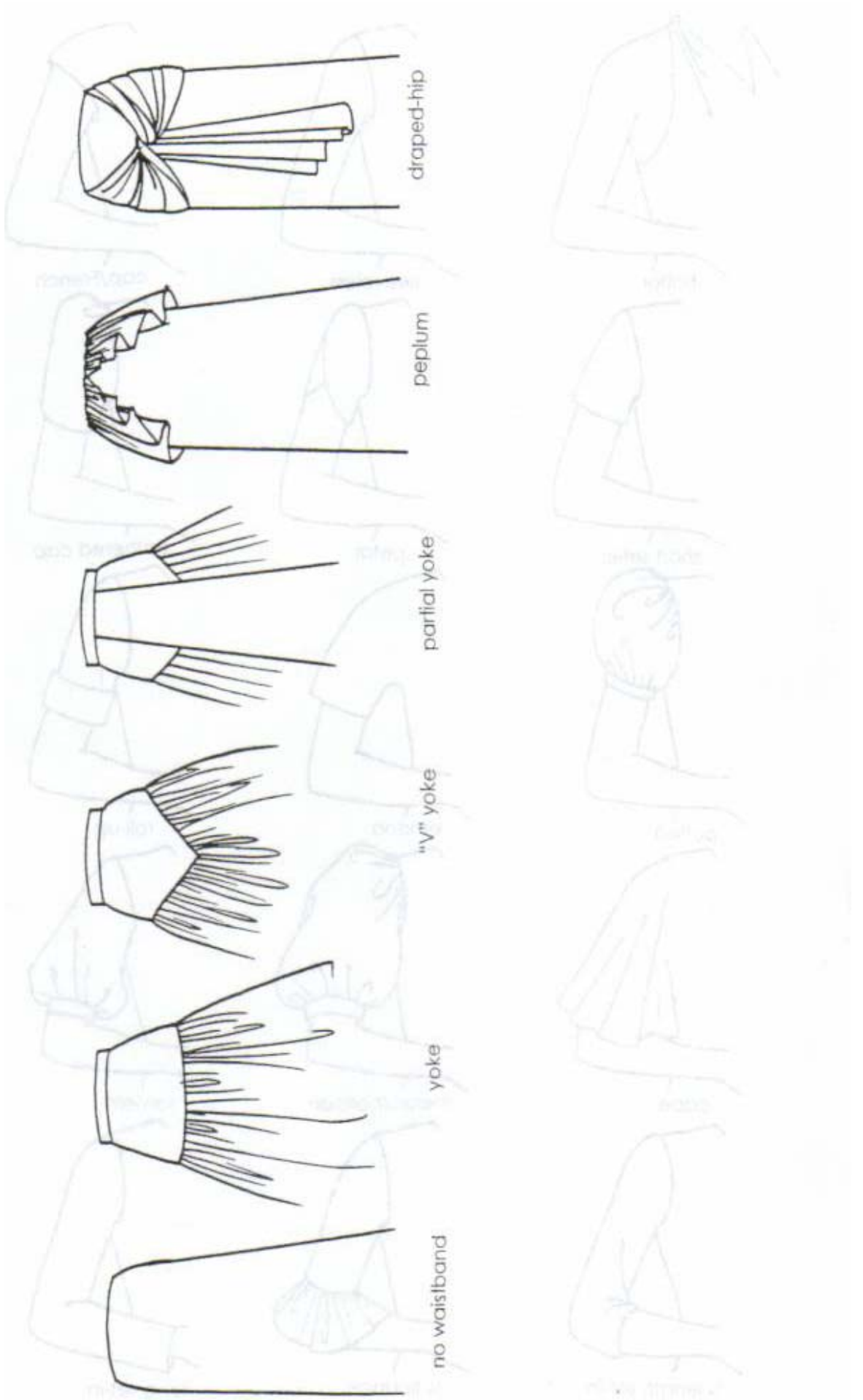


hip-stitched pleat



side wrap





draped-hip

peplum

partial yoke

"v" yoke

yoke

no waistband

SLEEVES



halter



sleeveless



cap/French



pinafore ruffle



short set-in



petal



gathered cap



butterfly



puffed



kimono



roll-up



bell



cape



melon/balloon



lantern



raglan



3/4 length set-in

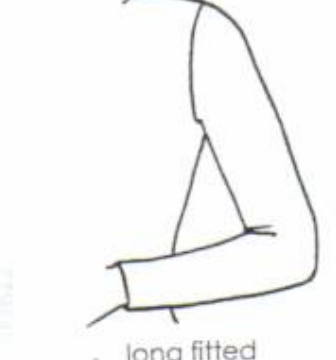


3/4 flounce



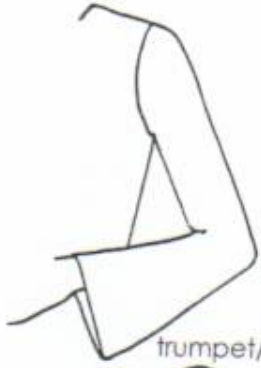
long set-in

2018



long fitted

SLEEVES



trumpet/pagoda



tailored shirt



bishop



puffed



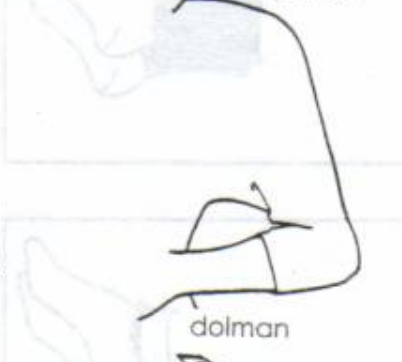
leg-of-mutton



Juliet



drop-shoulder



dolman



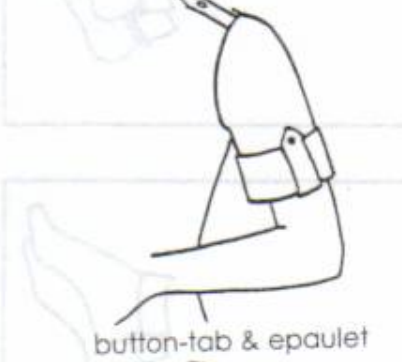
batwing



dolman



ruffle cuff



button-tab & epaulet



gauntlet



shoulder flange



gathered binding



plain barrel band



button notched cuff



French cuff



fitted cuff

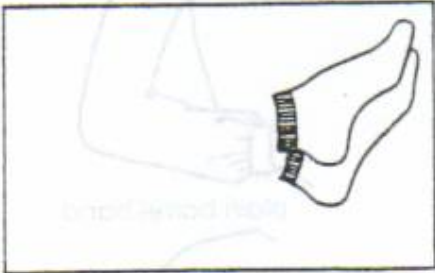


ruffed band

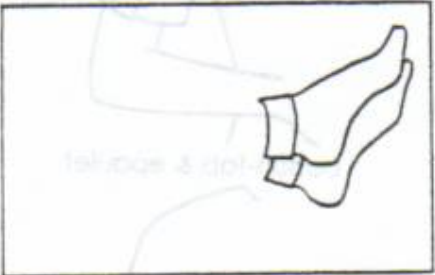
SOCKS



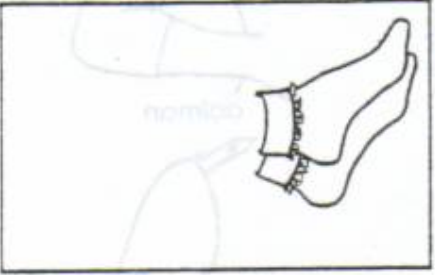
pedis



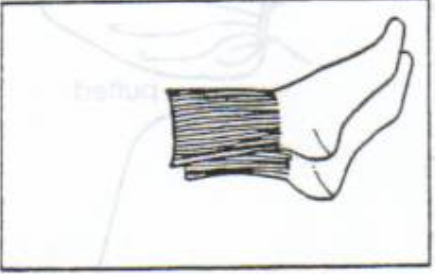
anklets/band



fold down ankle



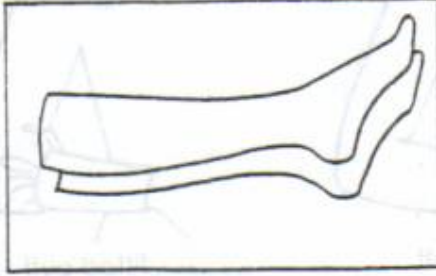
lace cuff anklets



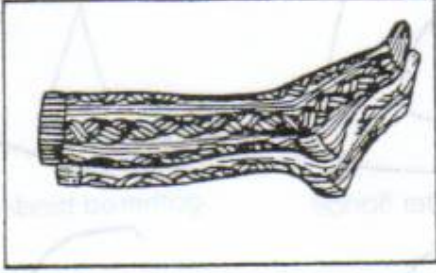
sport sock



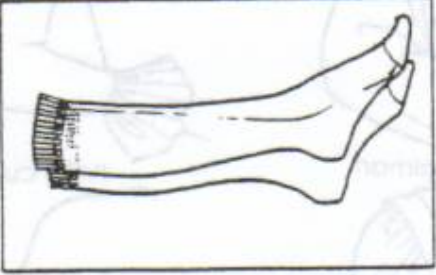
mid-calf sock



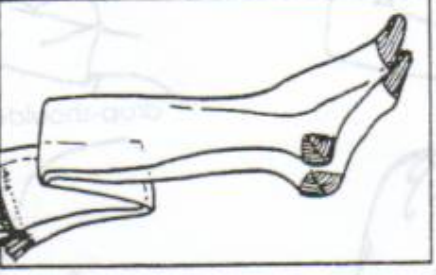
knee sock



cable knee sock



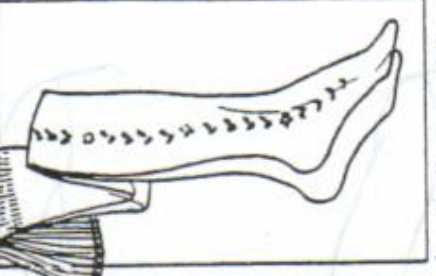
sheer knee sock



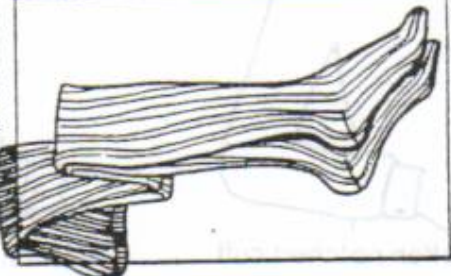
sheer stockings



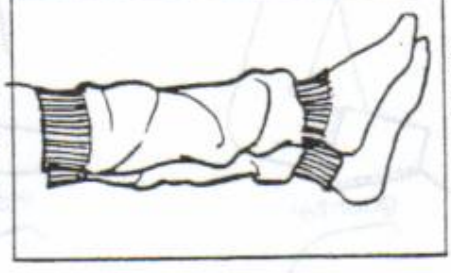
sheer pantyhose



decorative pantyhose



ribbed pantyhose



leg-warmers

SWEATERS



summer pullover cable



crew



v-neck



bateau



round neck



turtle neck



cowl neck



dolman



cardigan



shawl



sweater set



double-breasted

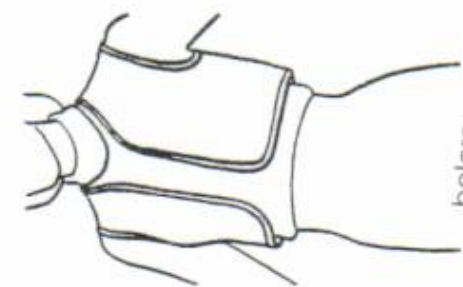


variation

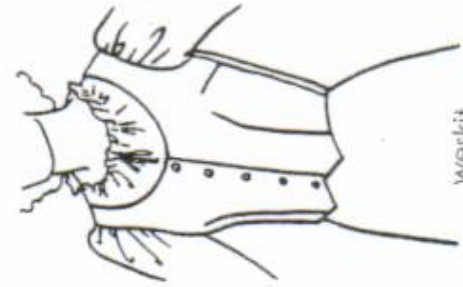


patchwork

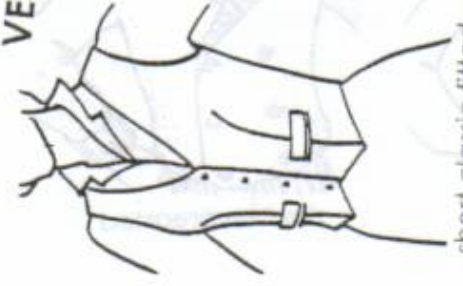
VESTS



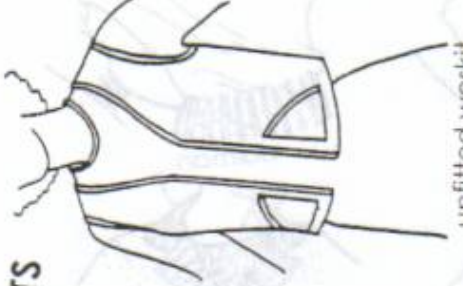
bolero



weskit



short classic fitted



unfitted weskit



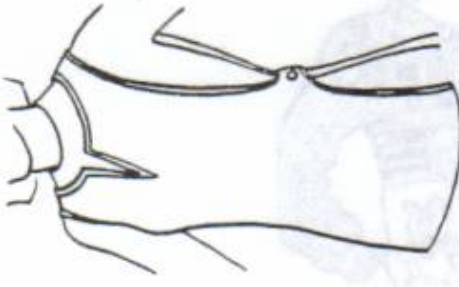
high-hip shawl collar



square high-hip unfitted



square low-hip/crotch-length



tabard



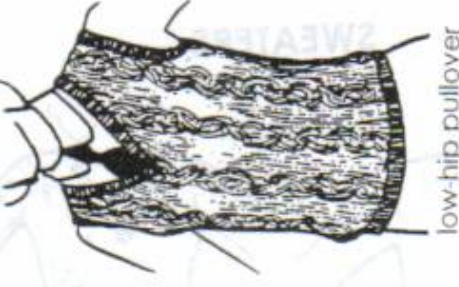
jerkin



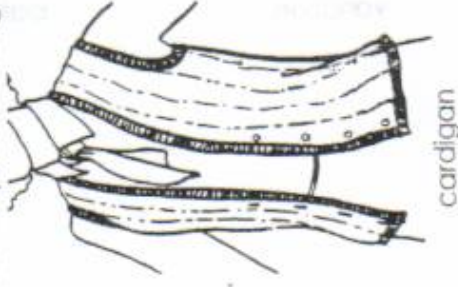
fitted waist



high-hip pullover



low-hip pullover



cardigan



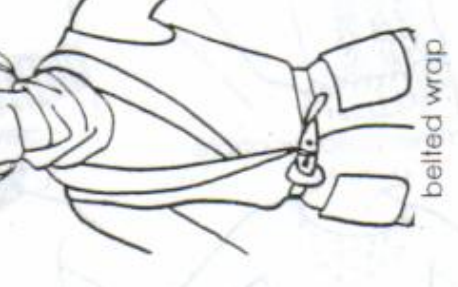
high-hip drop-shoulder



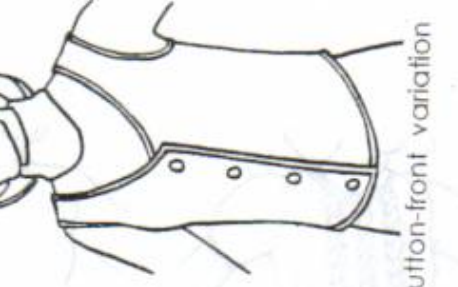
low-hip drop-shoulder



gathered waist

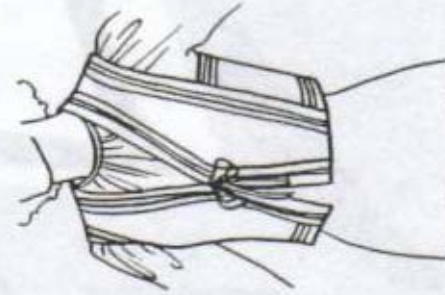


belted wrap

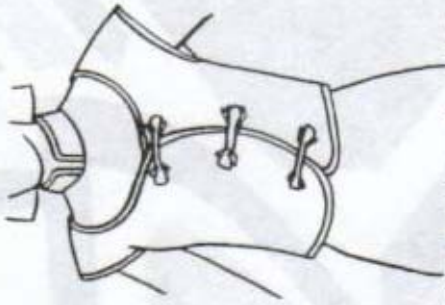


button-front variation

VESTS



fashion vest



Oriental drop-shoulder

