

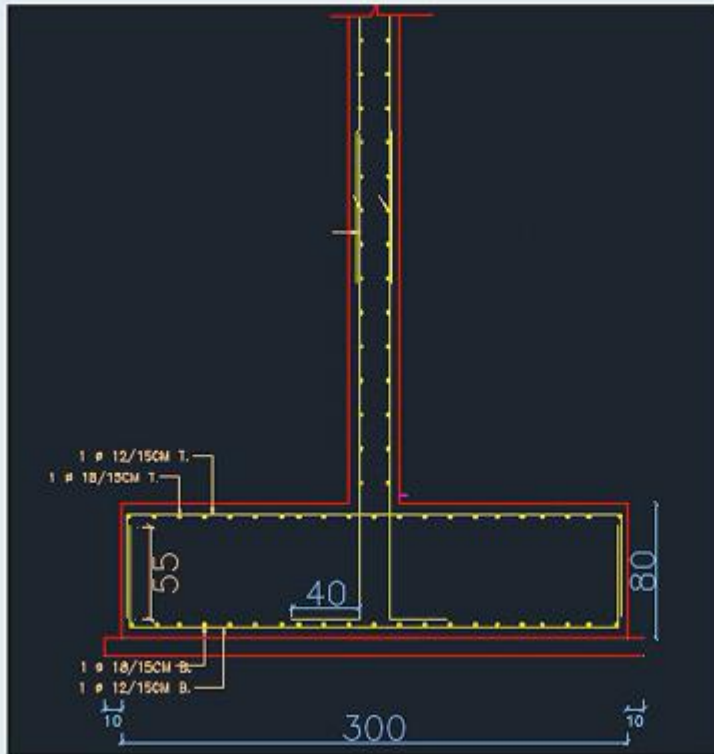
Question 1

Not yet answered

Marked out of 3.00

Flag question

The figure below shows a structural detail for a strip footing, and a wall which is 12 meters long. What is the quantity of concrete required to construct the Footing without the wall? IF the wall height is 3 meters and the wall thickness is 25 cm. Blinding concrete thickness is 10 cm.



- a. 28.8
- b. 40.8
- c. 4.2
- d. 32.7

Question 2

Not yet answered

Marked out of 2.00

Flag question

Your program manager has come to you, the project manager, for help with a bid for her newest project. You want to protect your company from financial risk. You have a limited scope definition. What is the best type of contract to choose?

- a. Cost plus percentage of the cost
- b. Cost plus fixed fee
- c. Lump sum
- d. Unit price

Question 3

Not yet answered

Marked out of 1.50

Flag question

what is the minimum duration to start curing concrete after pouring it

- a. 36 hours
- b. 10 hours
- c. 12 hours
- d. 24 hours

Question 4

Not yet answered

Marked out of 2.00

Flag question

During construction, the architect realizes that the specifications did not include requirements for some nondestructive testing of welds on some of the structural steel. The city inspection department requires the contractor to perform these tests. The individual responsible for paying for tests is the

- a. Owner
- b. Contractor
- c. Architect
- d. Structural Engineer

Question 5

Not yet answered

Marked out of 2.00

Flag question

In accordance with General Conditions, Existing mature vegetation on a property line was inadequately protected and, consequently damaged by a subcontractor's excavation equipment. The owner should require which party to remedy the damages?

- a. The subcontractor
- b. The contractor, with no additional compensation
- c. The owner's own forces
- d. The contractor, with compensation for additional work administered in a change order

Question 6

Not yet answered

Marked out of 3.00

Flag question

A contractor under a fixed-price construction contract has NOT allowed the electrical subcontractor to install lighting fixtures other than those stated in the contract documents. The electrical subcontractor believes the substituted fixtures to be of equal value. The construction is substantially completed and the architect rejects these fixtures. According to General Conditions, which of the following actions must be taken regarding the light fixtures?

- a. The architect must accept the lighting fixtures as installed without a cost credit to the owner
- b. The architect must accept the lighting fixtures as installed but with a cost credit to the owner
- c. The contractor is required to replace the lighting fixtures with the fixtures specified without reimbursement
- d. The contractor must replace the lighting fixtures with fixtures specified but is entitled to reimbursement for labor costs for the replacement

Question 7

Not yet answered

Marked out of 1.50

Flag question

The minimum duration for formwork removal of columns is

- a. 3
- b. 5
- c. 2
- d. 7

Question 8

Not yet answered

Marked out of 1.50

Flag question

The minimum strength for block is

- a. 27 Kgm/cm²
- b. 20 Kgm/cm²
- c. 25 Kgm/cm²
- d. 30 Kgm/cm²

Question 9

Not yet answered

Marked out of 1.50

Flag question

The concrete pouring should be stopped if the air temperature is more than:

- a. 33 c
- b. 35 c
- c. 32 c
- d. 30 c

Question 10

Not yet answered

Marked out of 2.00

Flag question

In a Lump sum contract , the fee or profit is:

- a. Determined with the other party at the end of the project
- b. Unknown
- c. Part of the negotiation involved in paying every invoice
- d. Applied as a line item to every invoice

Question 11

Not yet answered

Marked out of 1.50

Flag question

How is responsible for the health and safety in the site

- a. All the choices
- b. Owner
- c. Engineer
- d. Contractor

Question 12

Not yet answered

Marked out of 1.50

Flag question

Where the currency of payment is determined?

- a. Tender offer
- b. Contract
- c. Tender offer appendix
- d. Contract appendix

Question 13

Not yet answered

Marked out of 4.00

Flag question

The figure below shows a structural detail for a strip footing, and a wall that is 15 **meters** long. What is the quantity of steel 12 mm required to construct this footing? IF the wall height is 3 meters and the wall thickness is 25 cm.

Wall Reinforcement each face Horizontal 12mm/15cm

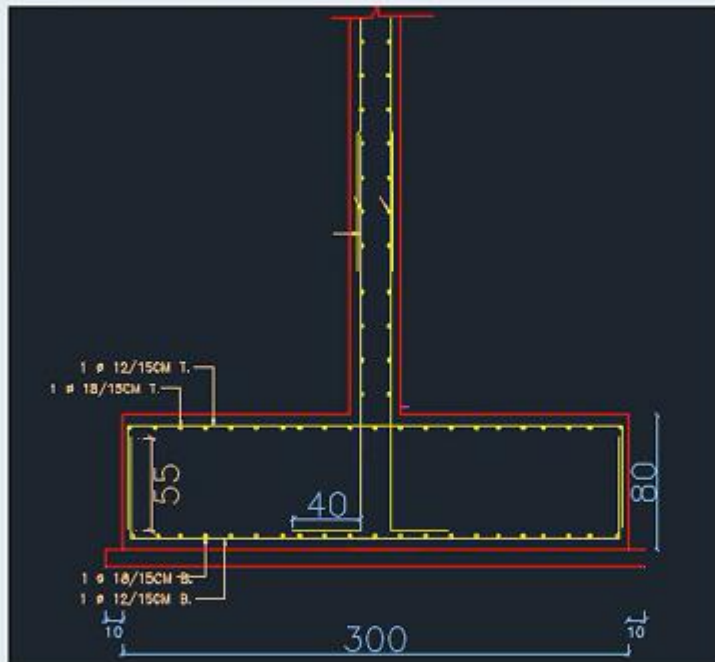
Wall Reinforcement each face Vertical 14mm/15cm

Cover 7.5 cm

Overlap for 18mm steel is 125 cm

Overlap for 12 mm steel is 64 cm

Steel comes from the manufactory is just 6 m long



- a. 2.1 ton
- b. 0.5 ton
- c. 1.1 ton
- d. 0.7 ton

Question 14

Not yet answered

Marked out of 1.50

Flag question

If the Engineer does not attend for concrete testing who will pay for retesting

- a. Subcontractor
- b. Contractor
- c. Owner
- d. All the choices

Question 15

Not yet answered

Marked out of 1.50

Flag question

what is the duration for submission the draft of the final payment certificate

- a. 46 after the final certificate
- b. 56 after the final certificate
- c. 42 after the final certificate
- d. 52 after the final certificate

Question 16

Not yet answered

Marked out of 3.00

Flag question

The following information belongs to a target cost contract: Target cost = \$300 M, Target band starts at \$ 295 M and ends at \$320 M , Target fee = \$ 40 M , cost-saving share 70/30 (70% by the client), cost increase share 60/40 (60 % by the contractor), contractor minimum fees is \$ 10 M.

IF the cost of the project is \$ 220 M, calculate the contractor's fee

- a. 62.5 M
- b. 22.5 M
- c. 92.5 M
- d. 52.5 M

Question 17

Not yet answered

Marked out of 2.00

Flag question

In accordance with General Conditions, the obligation to pay or to see the payment of money to a sub contractor, except as may otherwise be required by law, rests with the

- a. Owner alone
- b. Architect alone
- c. Contractor, the architect and the owner
- d. Contractor alone

Question 18

Not yet answered

Marked out of 1.50

Flag question

The unit price in BOQ could be changed if

- a. All the choices
- b. If the difference between the quantities is more than 10%
- c. If the difference between the quantities is more than 1% and less than 10%
- d. If the difference between the quantities is less than 9 %

Question 19

Not yet answered

Marked out of 2.00

Flag question

An architect is providing full architectural and engineering design services for a new detention center. The construction contract has been signed and the contractor informs the architect that the fire-sprinkler contractor does not have the fire line from the city main to the building in the price because it was not on the drawings or in the specifications. According to General Conditions, which of the following should be done?

- a. The architect should issue supplementary instructions directing the contractor to install the fire line
- b. The fire protection subcontractor should install the fire line at no additional cost
- c. The contract amount should be adjusted by a change order
- d. The fire protection engineer is required to pay for the installation of the fire line

Question 20

Not yet answered

Marked out of 1.50

Flag question

The minimum thickness for the first layer of plastering is

- a. 6 mm
- b. 8 mm
- c. 5 mm
- d. 7 mm