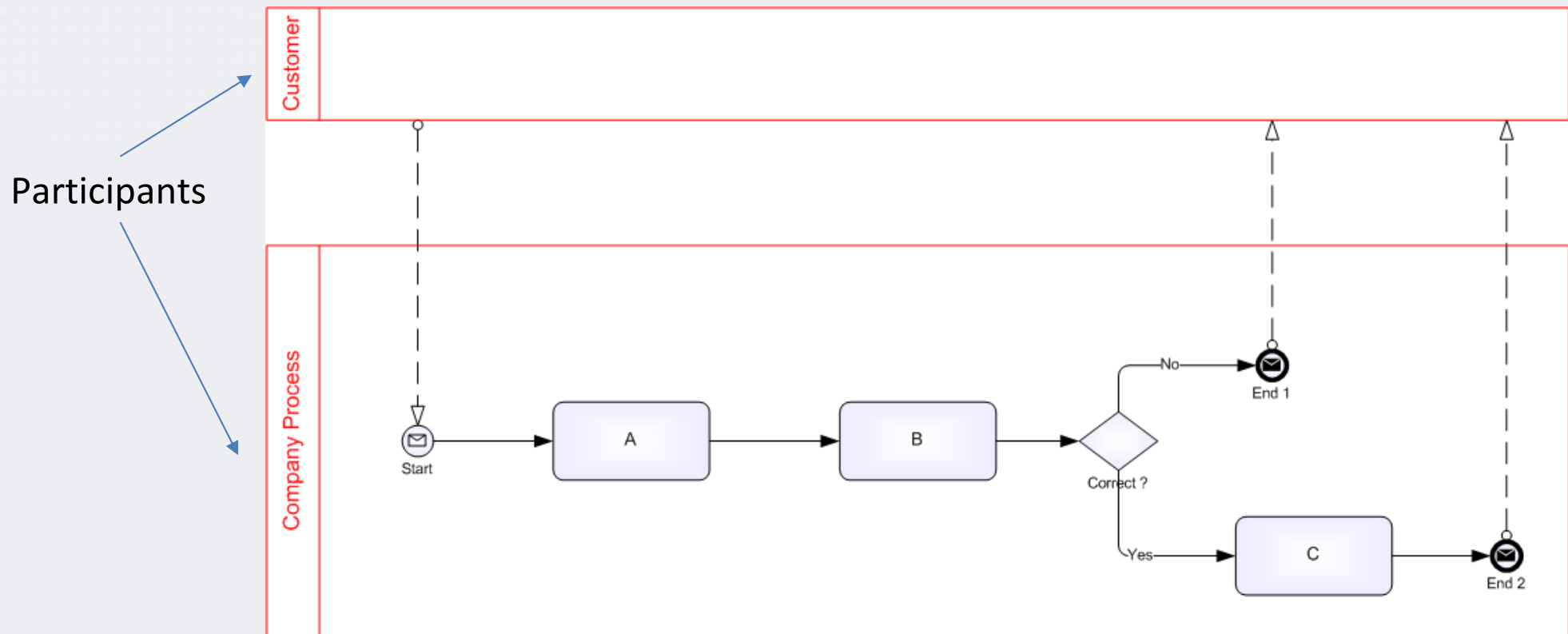


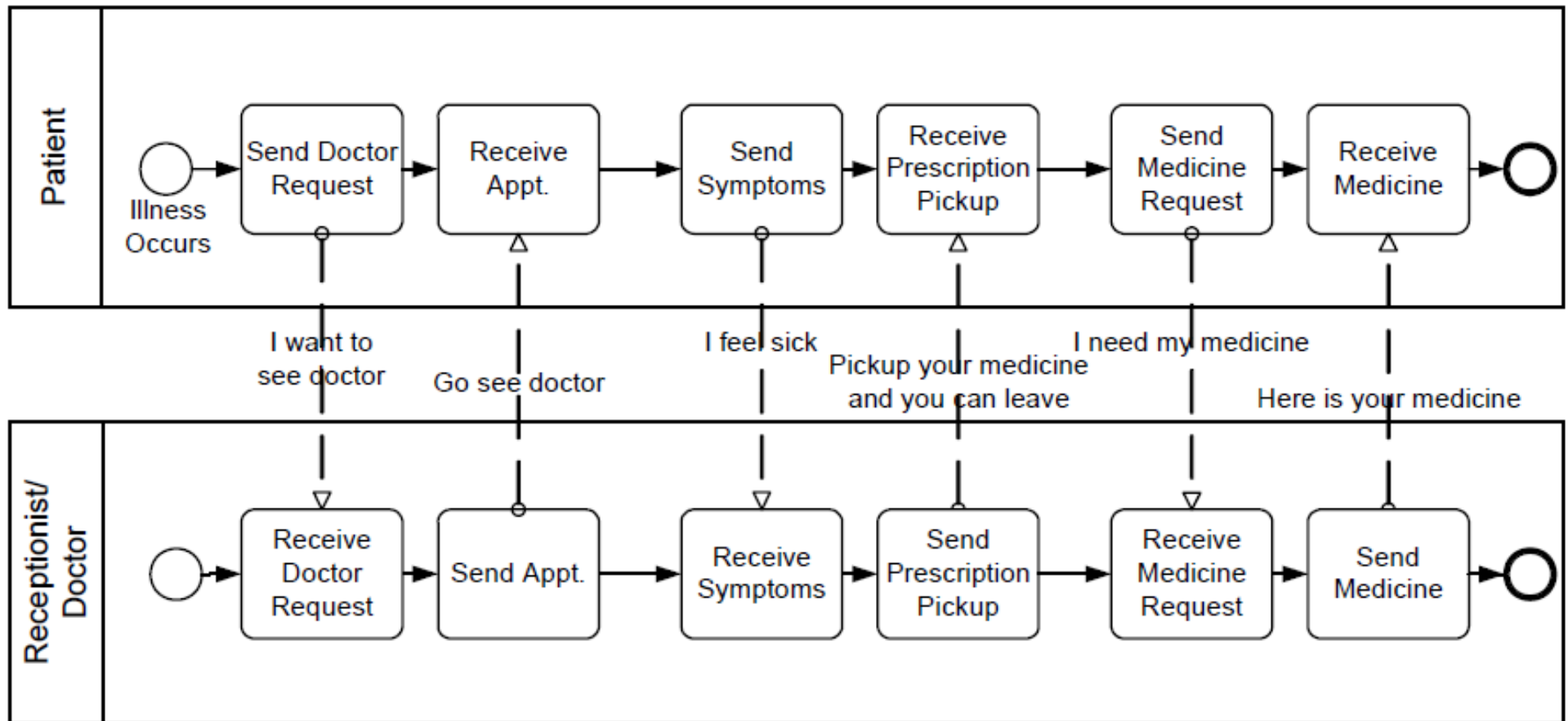
# BPMN Diagrams: Collaboration

Into collaboration diagrams there's a main concept to consider: "A **PARTICIPANT**".  
BPMN considers a participant an entity or process involved into a collaborative relation .



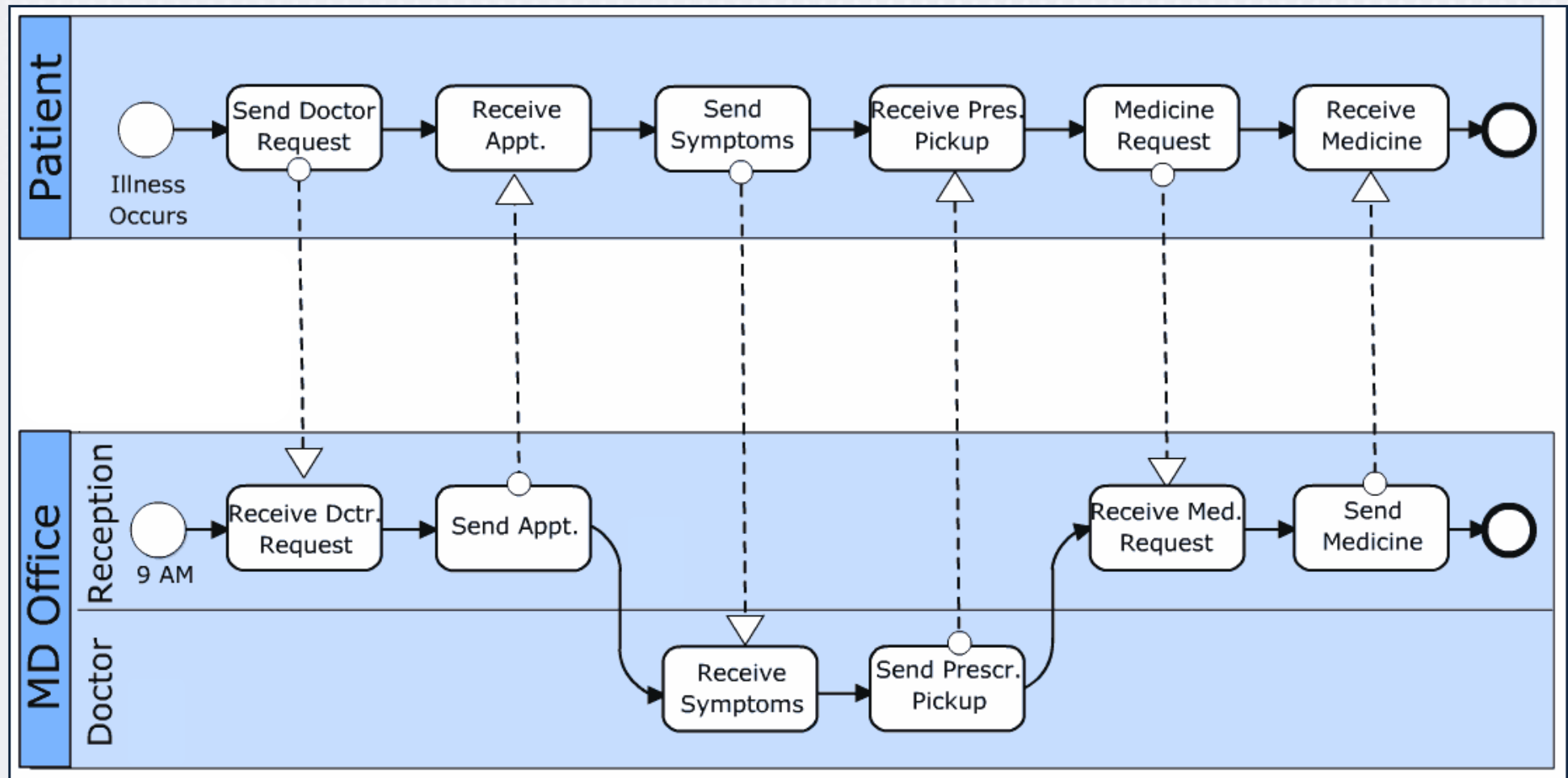
# BPMN Diagrams: Collaboration

Collaboration Diagram: Interaction between Pools



# BPMN Diagrams: Collaboration

Collaboration Diagram: Interaction between Pools + Lanes



# BPMN Collaboration: Exercise-4

The Sales department once they receive an order, they review the order, then they send it to the Payments department to process the payment for the order and they also start processing the order. If any unwanted event happen, they cancel the order and end the process. Otherwise, if all is ok, three things may happen. If payment is completed, they ship the order and send a message to say order completed. If the order was cancelled, they put back the products to the stock room (restock products) and they send a message to say so. If the payment was not made within 5 days, they also return back the products to the stock (restock products) and send a message to say "Order unpaid".

In the Payment department, once the payment request is received, they process the credit card. If for any reason, credit card fails, the order is cancelled, they prepare invoice and send a message to send payment completed.

**Draw a process/collaboration diagram for the following scenario**

# BPMN Collaboration: Exercise-4

