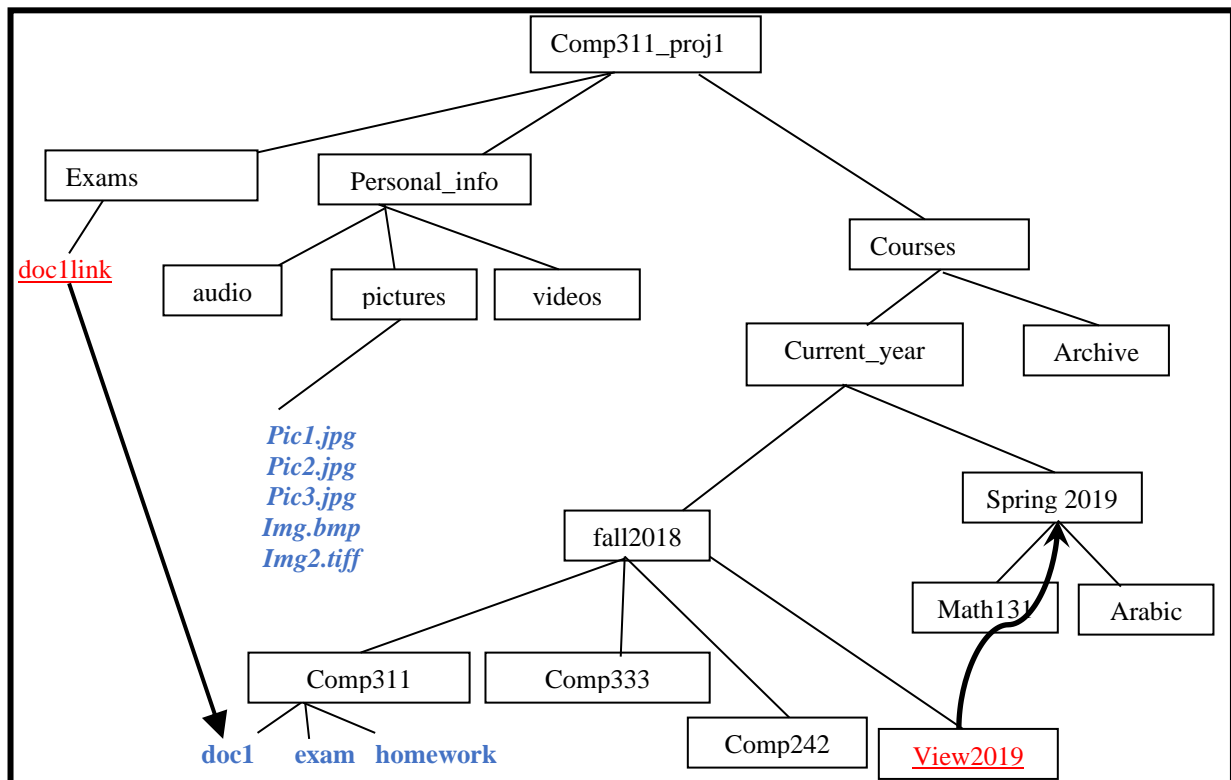


Instructors: 1. *Murad Njoum*
2. *Hafez Barghouthi*

Project 1 (Labs 1-8): Due: Saturday 10/11/2018 (Before 2:00 P.M)

- Consider the following tree:



Every file you have to create, you should write your name and ID inside it.

On the lab machine, create a subdirectory under your home directory called `youruserid_prj1` (e.g. `u1150111_prj1`).

- Command #1:** using absolute path concepts, within `youruserid_prj1`, create a directory hierarchy exactly in the order shown above called *comp311_proj1* (do not use `cd` command)

Create a file under current `comp311_proj1` directly and called it `command.txt`. (**DO NOT forget**, inside this file, at top, write **your name, ID** and write **down all commands**, from *command one till command 12* identified by command number followed by command itself, for example `Command#1.cp file1 file2`)

2. Inside `personal_info` directory, create file `pInfo.txt` and write inside it all information about yourself (Your full name, ID, Date of birth, your major, Hawyya ID, hopes, resident place, ... your C.V and any other thing about yourself, at least write 10 lines)

3. Create two macros, one is **called S** in insert mode which is used for save file and quit. Another one in command mode **call it C** which function is to go to line **number 6**, copy last 3 lines before that line (I.e. line 6) and paste them at the end of the file (*before the last line line*). **Note: macros should be permanent.**

4. **Command#2:** Create a link file (`doc1link`) inside `exam` directory makes it link to `doc1` which already has created later. And another link (`view2019`) inside directory `fall2018` to directory `Spring2019`, using
 - A. Relative Path.
 - B. Absolute Path.

and *briefly explain what is the difference between two commands you used later?* (Your explanation has to be underneath the two commands for both parts (A &B), inside the command.txt file as we mentioned before)

5. **Command #3** Create an empty file inside the `audio` directory named `favorite_styles.txt`

6. Use vi editor to edit `favorite_styles.txt`, then type into, the audio styles you like most. Save the changes and exit.

7. **Command #4** Show the content of the file `favourite_styles.txt` excluding the LAST line. Assume that the exact number of lines in the file is unknown.

8. **Command #5** with *one-line command*, lists all files in the directory `/usr/bin` with names starting with "g", followed by any single character, followed by "e" and ending with any combination of characters including the empty string, and put the result inside new file (`c4file.txt`) under `personal_info` directory.

9. **Command#6:** (back to your home directory) with *one-line command*, copy file `c4file.txt` from `personal_info` directory to `exam` directory.
10. Rename file you copied in step 9. With new name (`new_c4file.txt`)

11. **Command#7:**(back to your home work directory) list all files start with letter 'P' and end with extension "jpg" inside picture directory.
12. **Command#8:** *with one-line command*, create a file called *diff* by printing inside it "Hello World" in the directory `comp333` and then try to delete directory `comp333` and explain *why you used this command not others?*
13. **Command#9:** Change the permission of directory `fall2018` to *the following* (*u:-x+wr, o:-r+w-x, g:+rw-x*) *using absolute mode method*.
14. **Command#10:** *with one-line command*, go to your home and *find* the file `homework.txt` from your current position (i.e. your home directory) and print the content of this file at screen.
15. **Command#11:** Write *one-line* command to display **the date (just date without time)** of changed time of directory `fall 2018`.
16. **Command#12:** Suppose you are trying to access file `passwd` and give you permission denied, write command to print the first name for given `username`.

- Go to the directory one level above `youruserid_prj1` (your home directory) and type the command

```
tar -cvf youruserid_prj1.tar youruserid_prj1
```

This command will create an archive (tar file) of the entire directory structure of `youruserid_prj1`.

Turn in the file `youruserid_prj1.tar` by putting it in your home directory by the due date and time.

You should do all the work above completely on your own. Working with anybody else in class or others on any part of this project will result in a zero grade.

No projects will be accepted after the due date and TIME for any reason