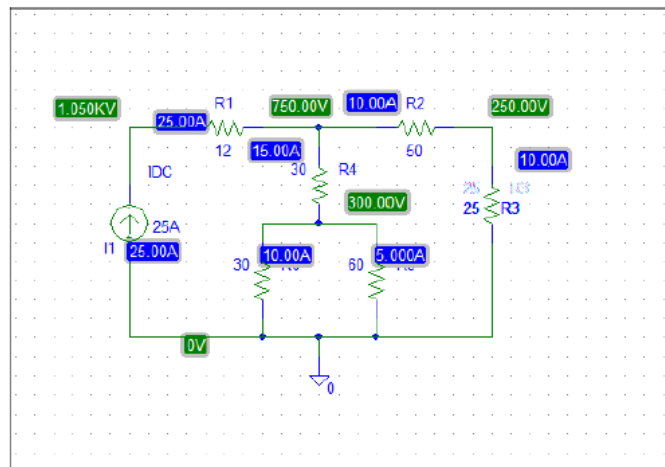


Pspice Practice Questions

Simulation Results

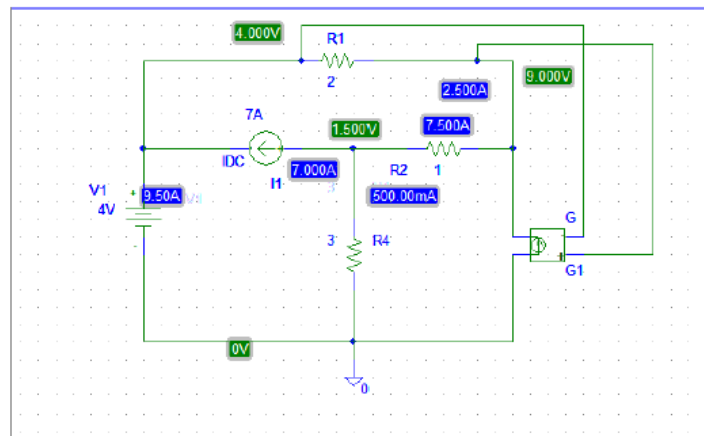
Problem 3.25

- ⇒ Make sure to add GND as reference
- ⇒ Use bias point detail from setup analysis
- ⇒ To copy the schematic with results, go to edit and choose copy to clipboard then paste in the document



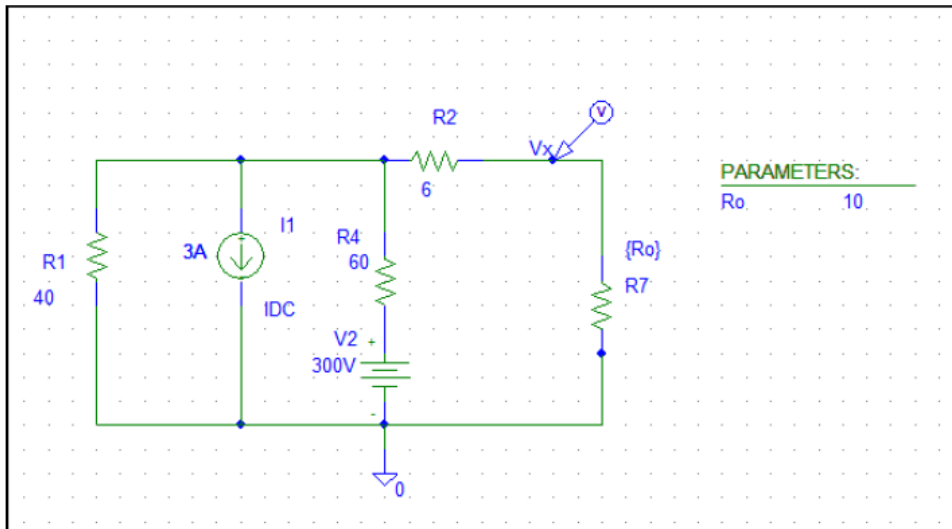
Problem 4.25

- ⇒ Make sure to add GND as reference
- ⇒ Use bias point detail from setup analysis
- ⇒ To copy the schematic with results, go to edit and choose copy to clipboard then paste in the document

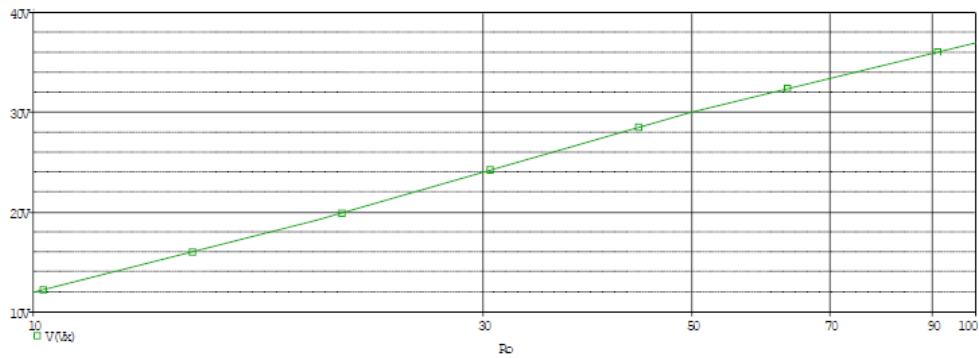


Problem 3

- ⇒ In schematic, place part "param" and specify name 1 and value 1
- ⇒ From Setup analysis → choose DC Sweep
- ⇒ → Global parameter and specify the same name as in **param** without brackets
- In value list use values of Ro

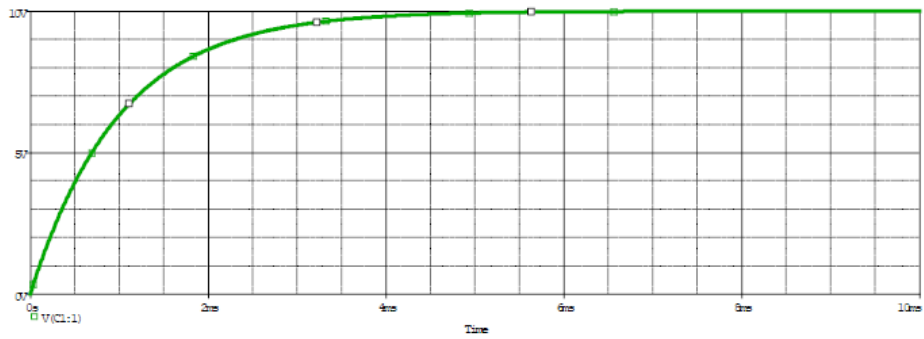
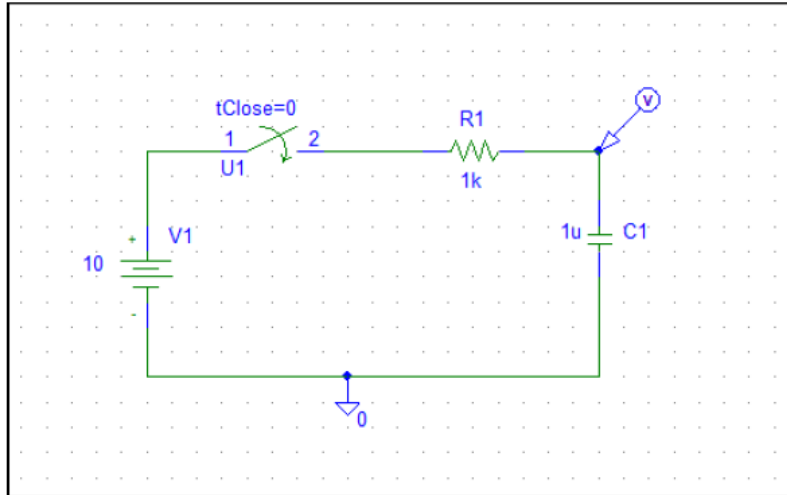


- ⇒ From Probe window, copy result and paste it



Problem 4

- ⇨ Transient analysis: mark/choose skip initial transient solution
- ⇨ Choose end time suitable to reach steady state (at least $5 \cdot R \cdot C$)
- ⇨ Choose step ceiling < final time/100)
- ⇨ Copy schematic
- ⇨ Copy result from probe window



Problem 5

- ⇒ Transient analysis: mark/choose skip initial transient solution
- ⇒ Place param from parts and give it a name and initial value
- ⇒ Choose parametric analysis and do the same procedure as for dc sweep (global parameter and value list for R : (list 100, 500, 1k))
- ⇒ Choose end time suitable to reach steady state
- ⇒ Choose step ceiling 10u
- ⇒ Run simulation
- ⇒ Copy schematic
- ⇒ Copy result from probe window

