

Landscape Design ENPL 232

Street Design

By
Samar Nazer

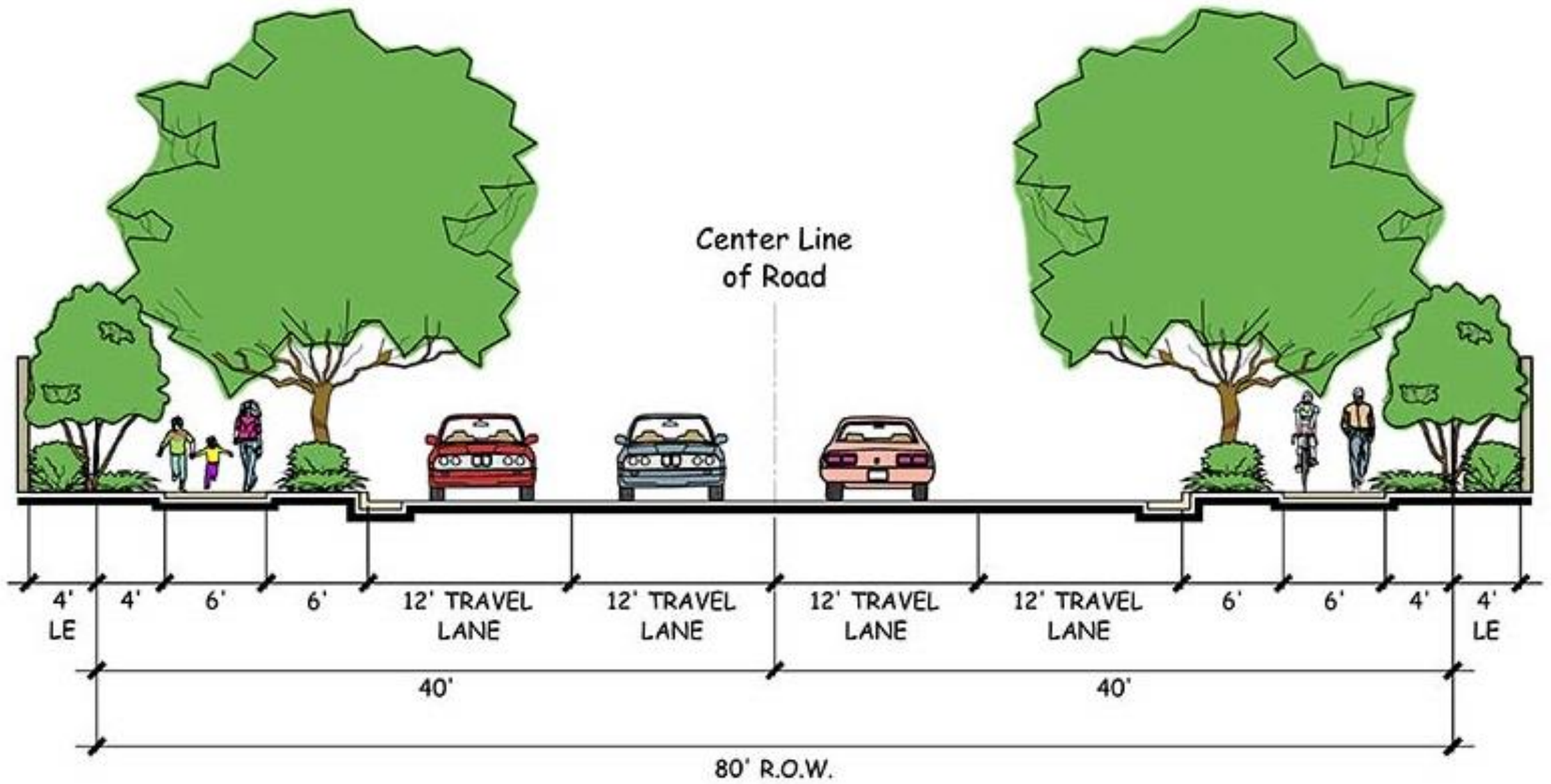
Department of Urban Planning and Landscape Architecture
Faculty of Engineering/Birzeit University

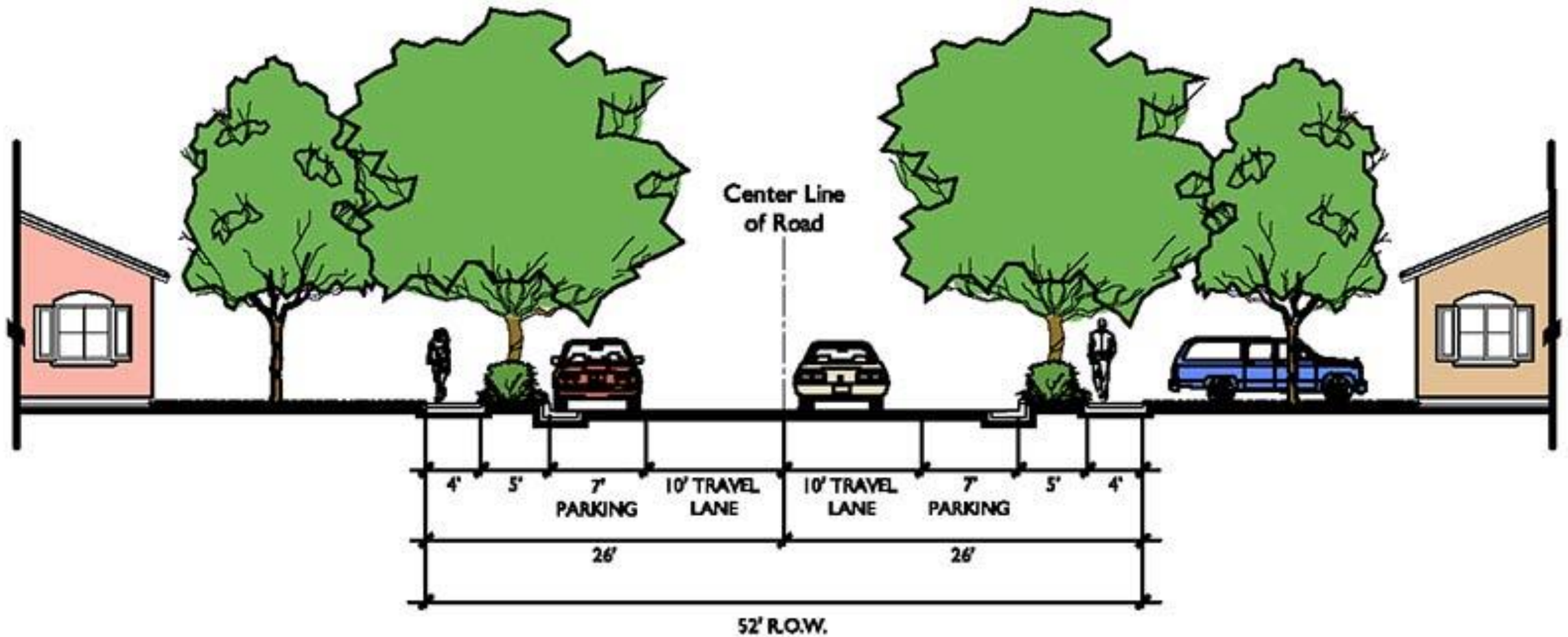
Street design

- Pedestrian
- Vehicles (small roads, highways)

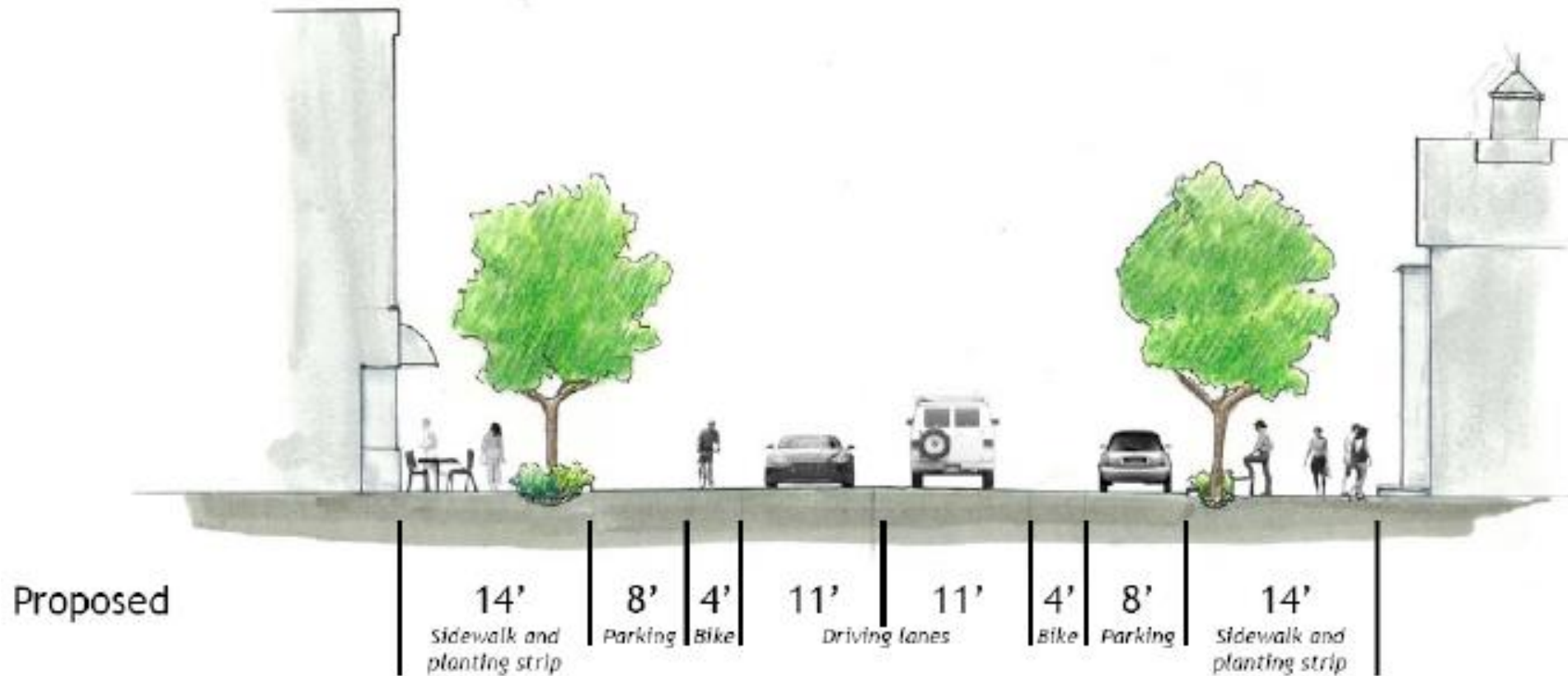
- Facades
- Lighting, trafic lights, signs, telephone lines, WiFi , security cameras, ...etc
- Drainage
- Street banks (side walks), people with disabilities
- Street furniture (benches, pins...etc)
- Planting
- Bycile lanes
- Car park







STREETSCAPE IMPROVEMENTS

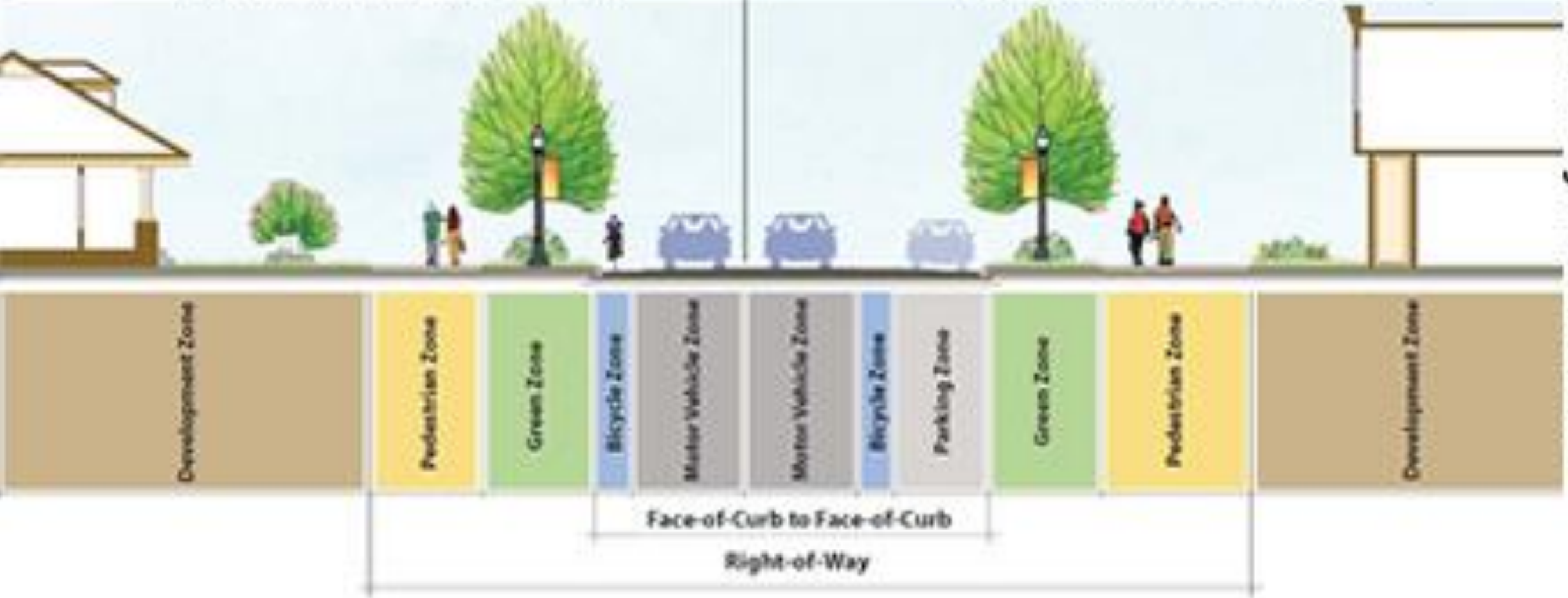


Roadway Cross-section for a Pedestrian-Friendly **NEEDHAM STREET**

Possible Residential Scenario

Possible Commercial Scenario

Source: City of Charlotte





WiFi Hotspots

Security Surveillance Cameras

Facade/Building Edge Lighting

E-bike

Solar Panels

Air Quality Measurement Sensor

Interactive Wayfinding and Real-Time Transit Info

Street Lighting

Vehicular Traffic Signal

Electric Car-Charging Station

Mobile Safety Applications

Speed-Tracking Cameras

Parking Meters

Street Signage Lighting

Pedestrian Signals

Cycle Signals

Pedestrian-Level Lighting

Active Street Frontage Lighting



Drainage



Street furniture



5/27/2021



Samar Nazer

11



5/27/2021

Samar Nazer

12





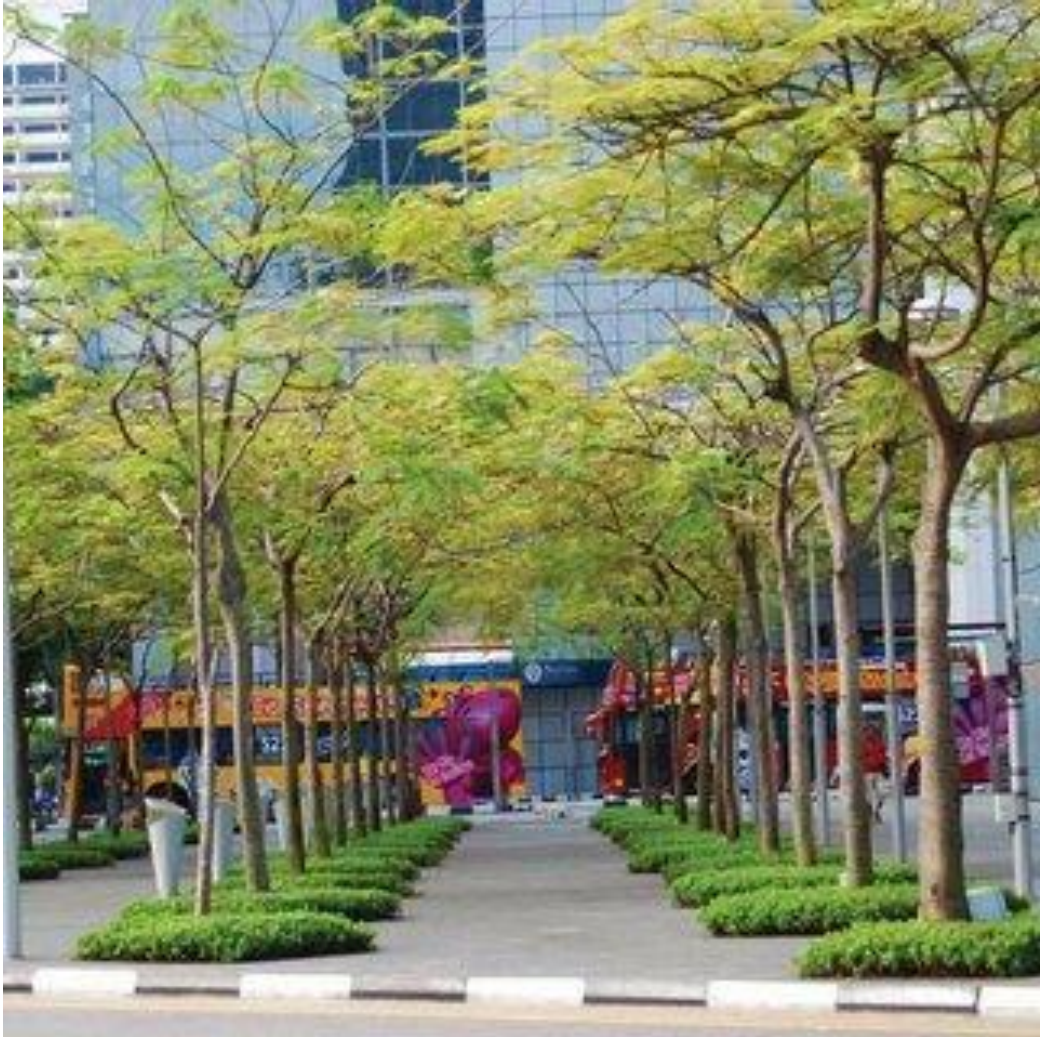








Street Planting

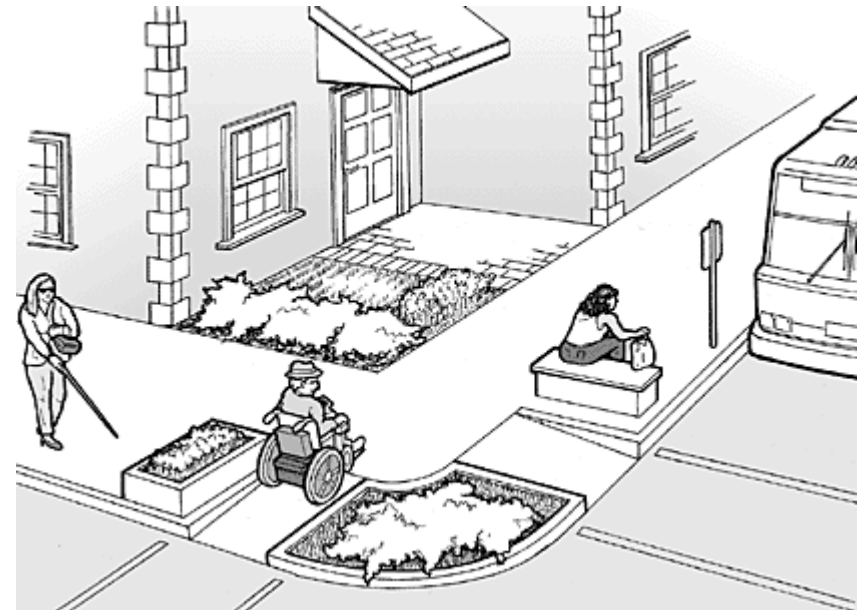








Disable



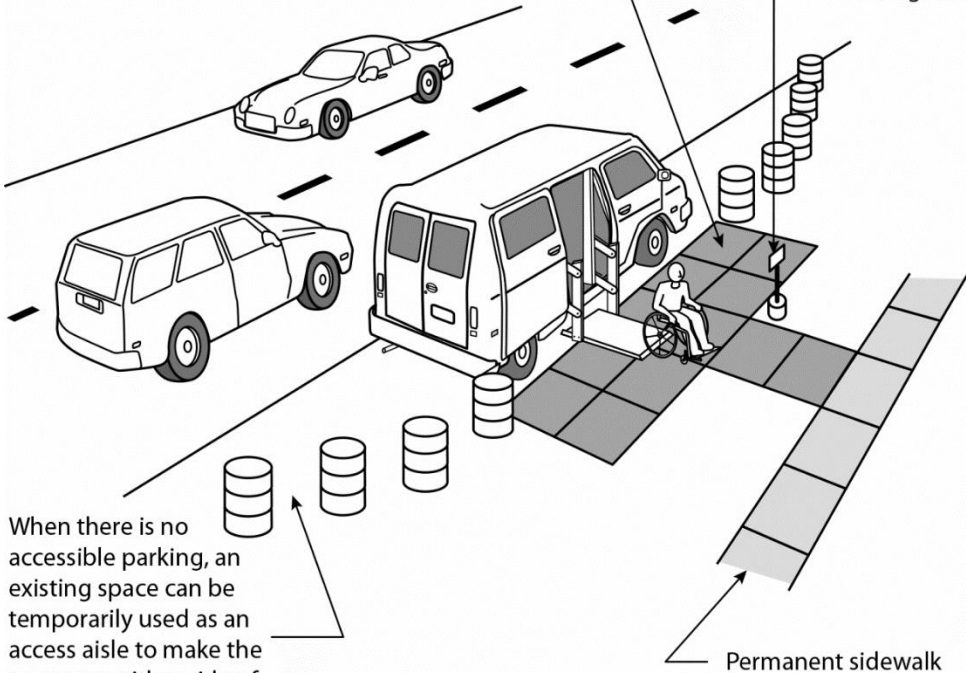


www.alamy.com - CMPEPR



Rubber matting used to cover unstable ground surface at passenger loading area and to provide an accessible route to sidewalk.

Portable sign identifying accessible passenger loading zone.



When there is no accessible parking, an existing space can be temporarily used as an access aisle to make the spaces on either side of the aisle accessible.

Temporary Passenger Loading Zone

Structures in the streets

- ramps and sidewalks lowered to the wheelchair;
- tactile floors (special floors perceived by touch) and alert for blind people;
- metal bars in the entrances of buildings;
- sidewalks and streets in perfect condition without holes and damages;



Structures in transports

- elevators in the buses for wheelchairs and places reserved for people with low mobility
- extension of specialized vehicles for the transport of disabled people in small towns
- qualified and specialized professionals for the care of people with disabilities



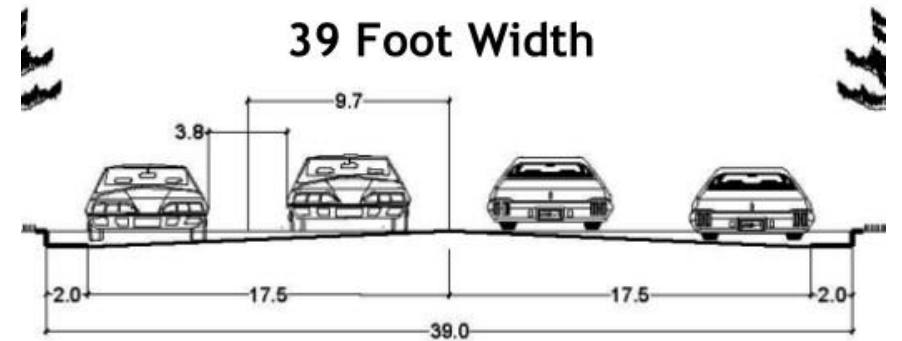
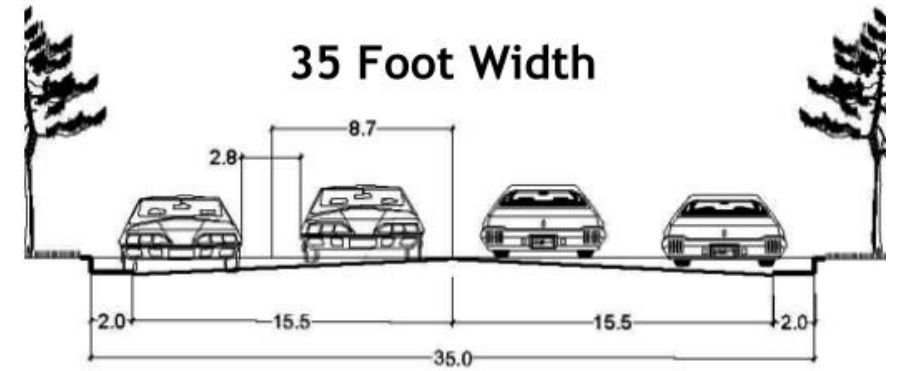
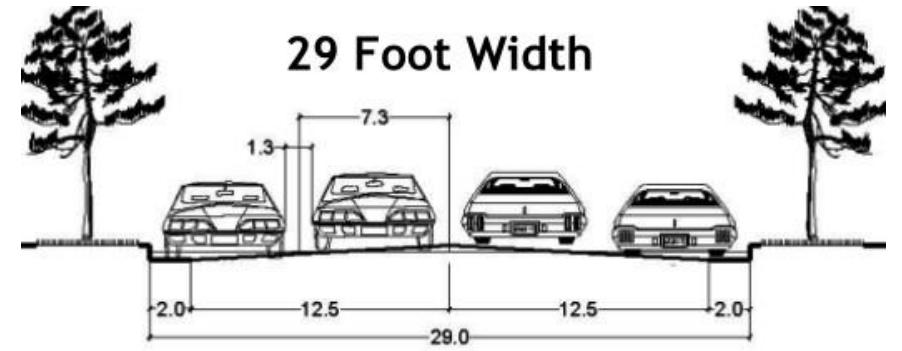
Traffic light

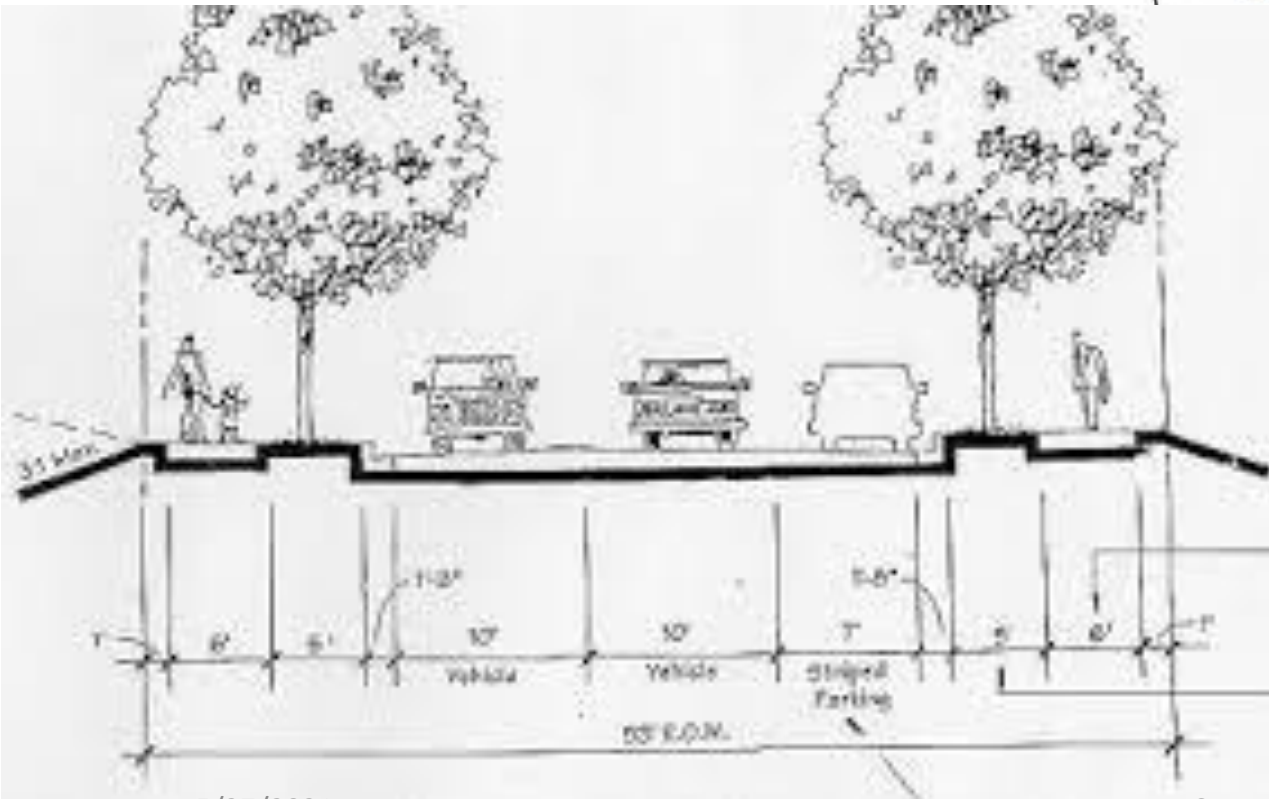
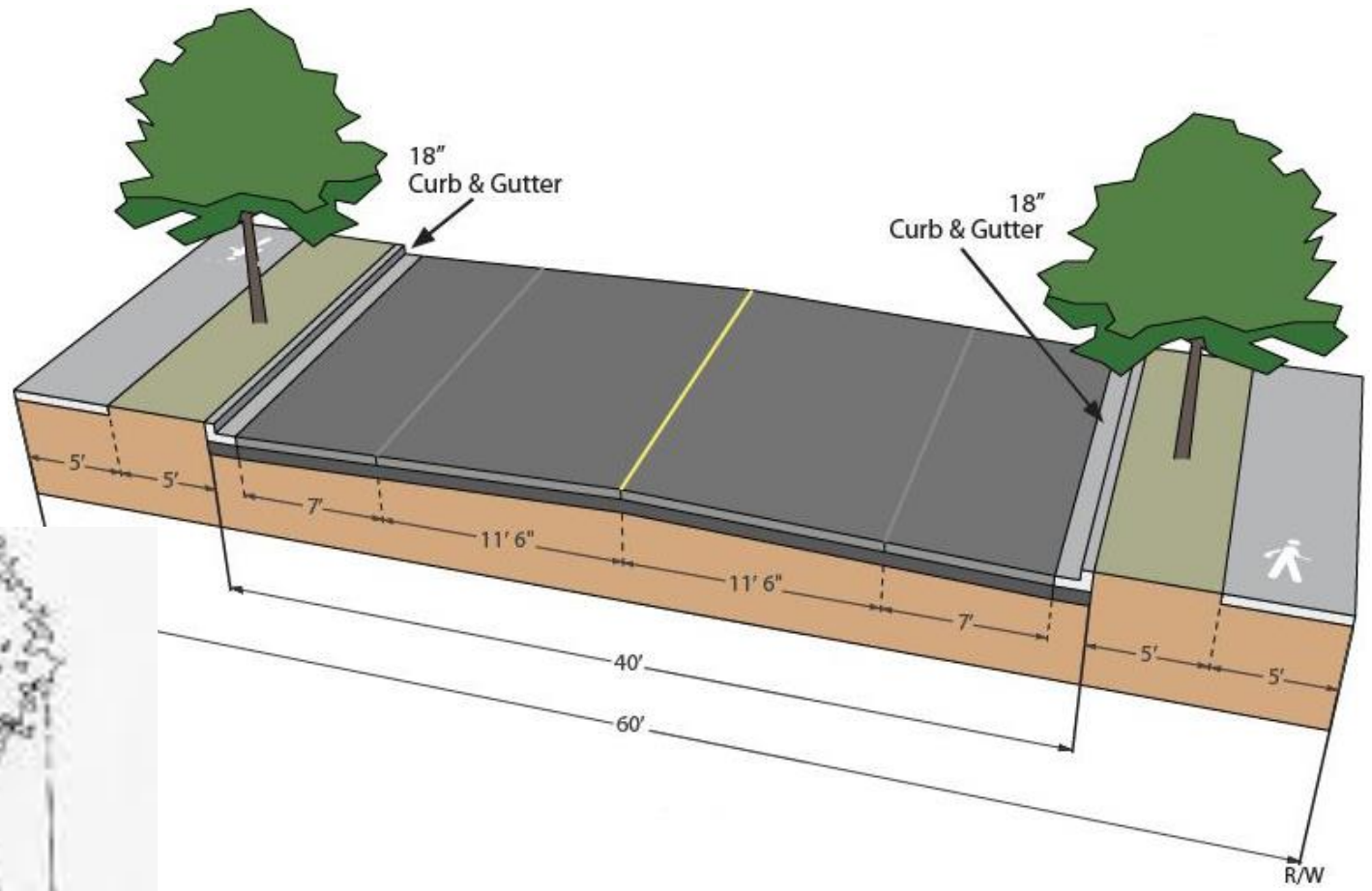
-Sound for blind



Samar Nazer





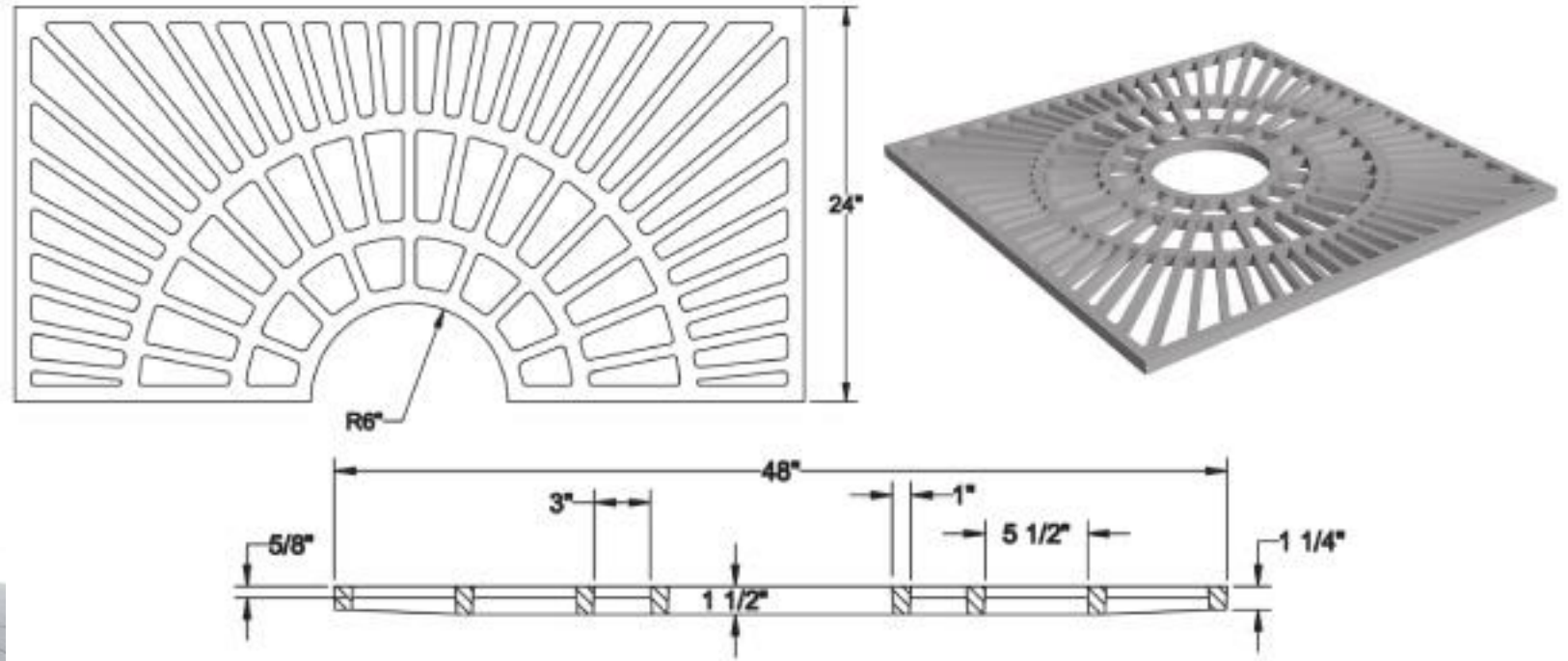


5/27/2021

Samar Nazer

31

Grates



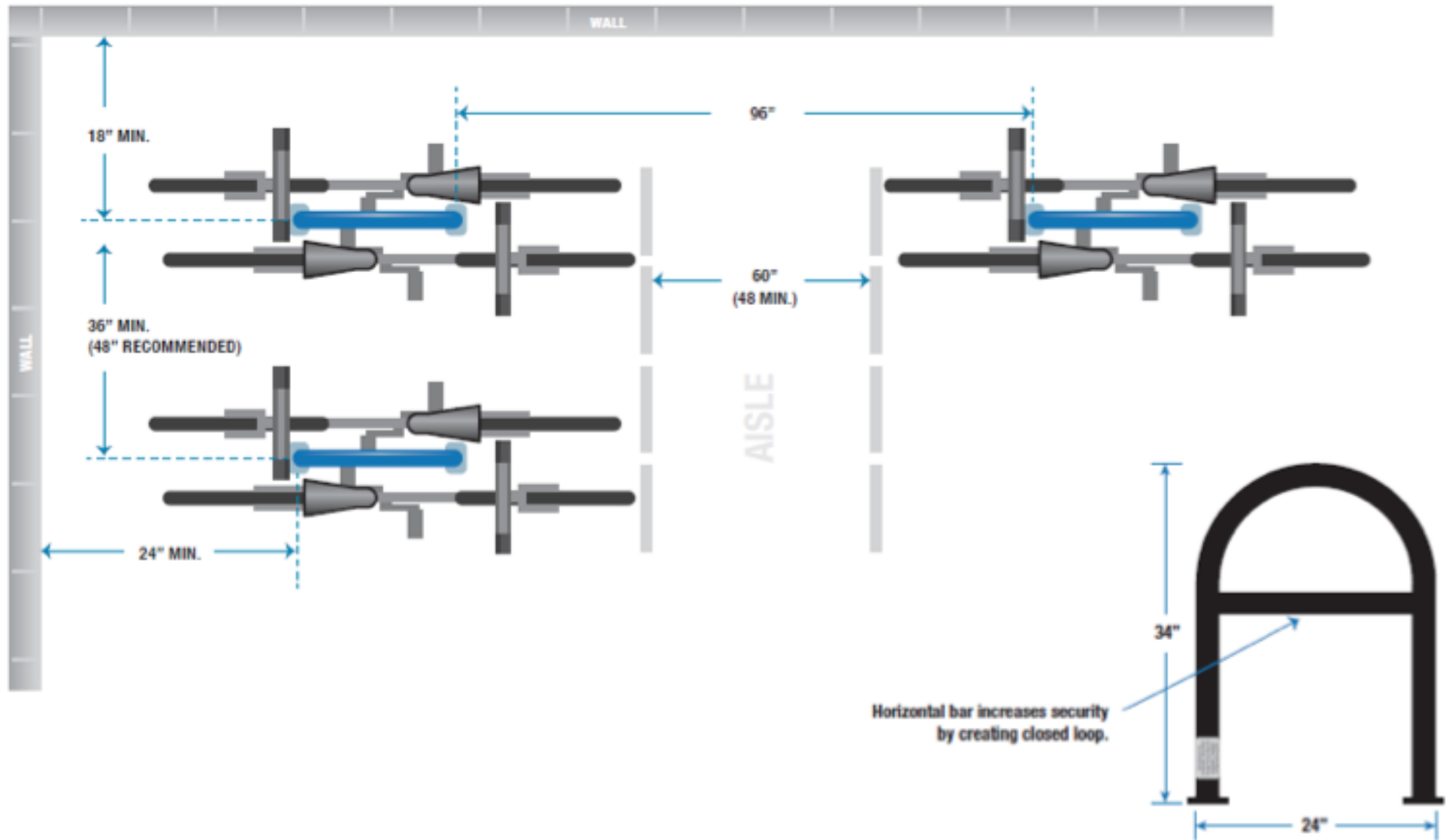
5/27/2021

Samar Nazer

32

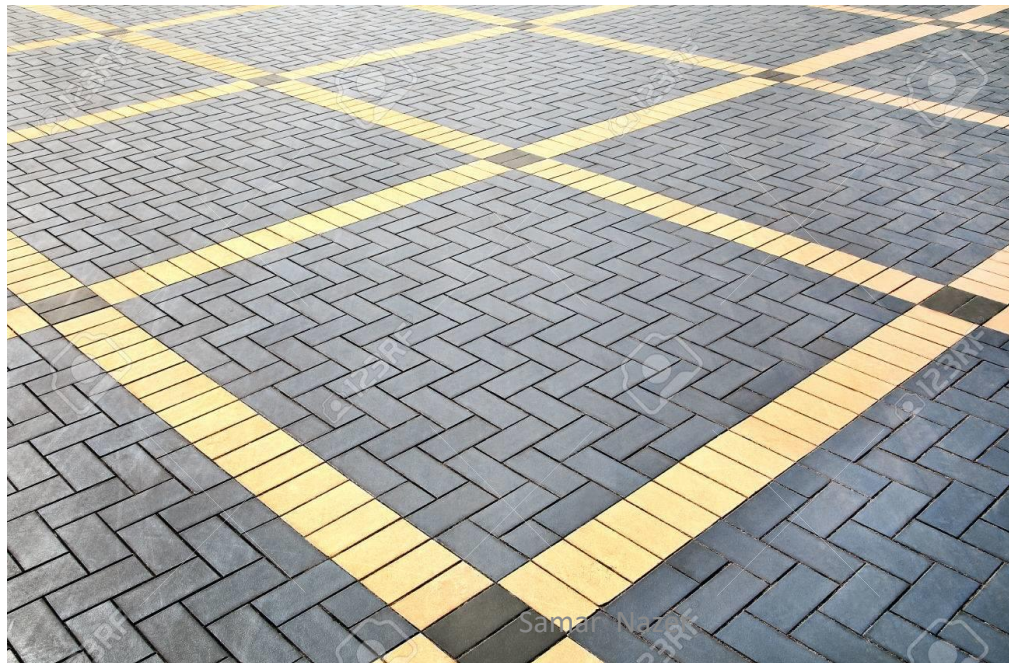


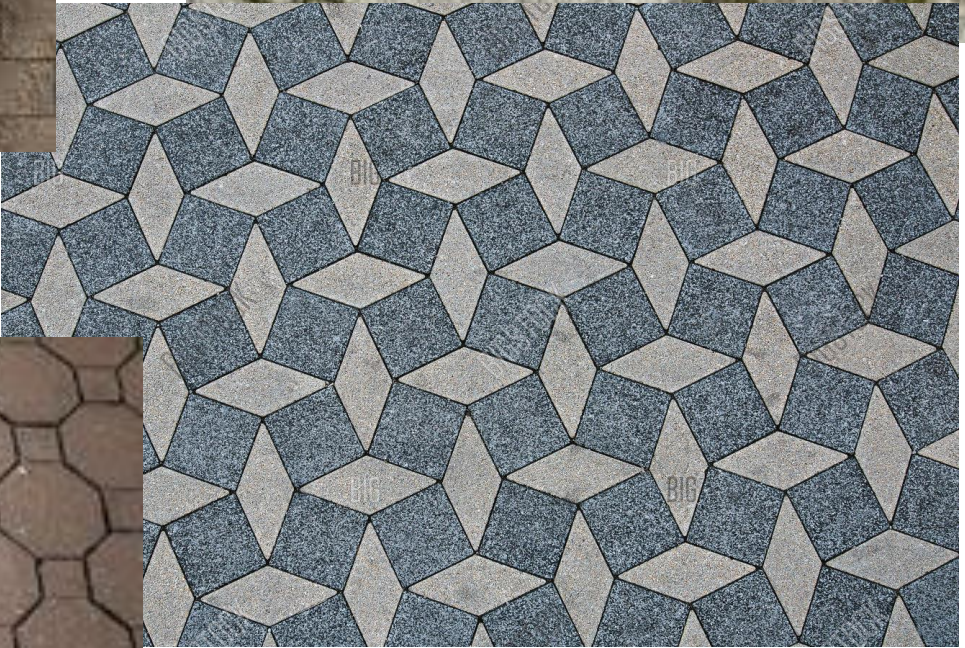
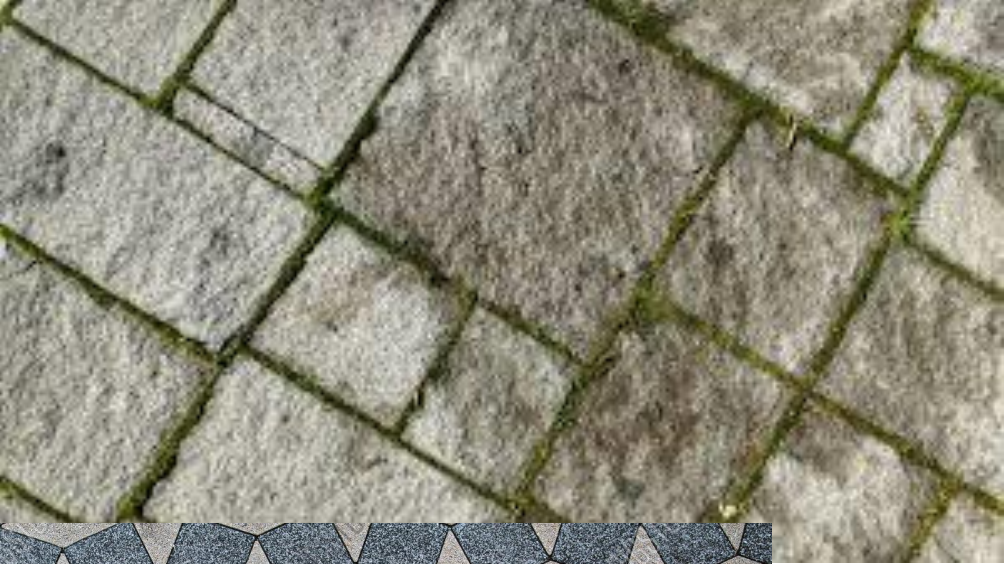




(© Urban Bicycle Parking Systems 2014)







Rambla Steet Parcelona





5/27/2021



Samar Nazer

40

Mariahilfer street Veina



Download from Dreamstime.com
This watermarked comp image is for previewing purposes only.

ID 65662423
© Radub85 | Dreamstime.com



alamy stock photo

RJ24EH
www.alamy.com



5/27/2021



Samar Nazer

42



5/27/2021

Samar Nazer



43

Pedistrian street





5/27/2021

Samar Nazer

45

Trees for streets

- *Melia azedara*
- *Erethrena cafra*
- *Brechichiton acerifolia*
- *Brechichiton discolor*
- *Peltiphorum pterocarpa*
- *Platanus orientalis*
- *Catalpa*
- *Tilia europea*
- *Jacaranda*
- *Cersis siliquastrum*
- *Casuarina*
- *Gingo biloba*
- *Delonix regia*
- *Prunus sp. Communis and armeniaca*
- *Aelanthus altissima*
- *Acacia cyanophila*
- *Hibiscus tiliaceus*
- *Robinea psedouacacia*
- *Bohinea variagata*
- *Pyrus communis*

Melia azedara



5/27/2021



Samar Nazer

47

Brechichiton



5/27/2021

Peltiphorum pterocarpa

5/27/2021

Samar Nazer



Erethrena cafra



5/27/2021

Samar Nazer

50

Catalpa europea



Tilea europea



Shrubs for streets

- Hibiscus
- Bryenia
- Dodonia
- Rosemarinus
- Lavandula
- Ligistrum
- Pelargonum
- Cistus

